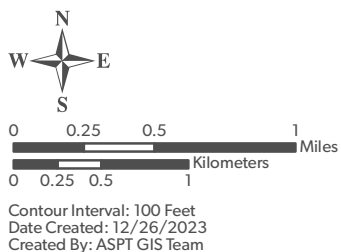
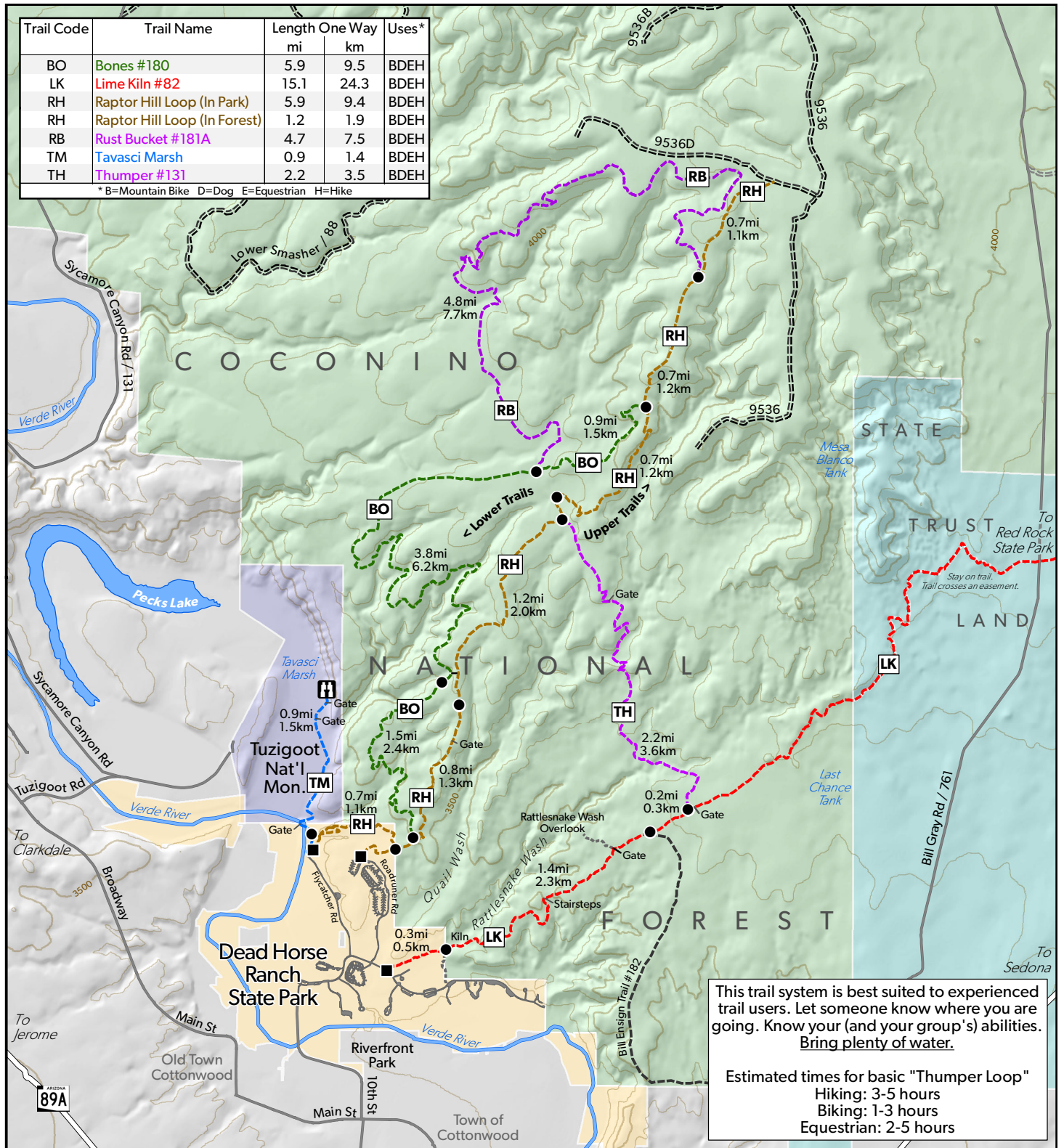


# DEAD HORSE RANCH STATE PARK

# Area Trails Map

Trail Code	Trail Name	Length One Way		Uses*
		mi	km	
BO	Bones #180	5.9	9.5	BDEH
LK	Lime Kiln #82	15.1	24.3	BDEH
RH	Raptor Hill Loop (In Park)	5.9	9.4	BDEH
RH	Raptor Hill Loop (In Forest)	1.2	1.9	BDEH
RB	Rust Bucket #181A	4.7	7.5	BDEH
TM	Tavasci Marsh	0.9	1.4	BDEH
TH	Thumper #131	2.2	3.5	BDEH

\* B=Mountain Bike D=Dog E=Equestrian H=Hike



- Junction
- Trailhead
- Non-Motorized Trail
- Connector Trail
- Motorized Trail
- Road
- State Park
- National Forest
- State Trust
- National Park Service



Trails on this map cross State Park, National Park Service and National Forest Service land including an ASPT easement across Arizona State Trust Land. Trails shown are maintained by various land managers, and ASPT makes no claims on the accuracy of the data. Check with the appropriate land manager before using any trail.