

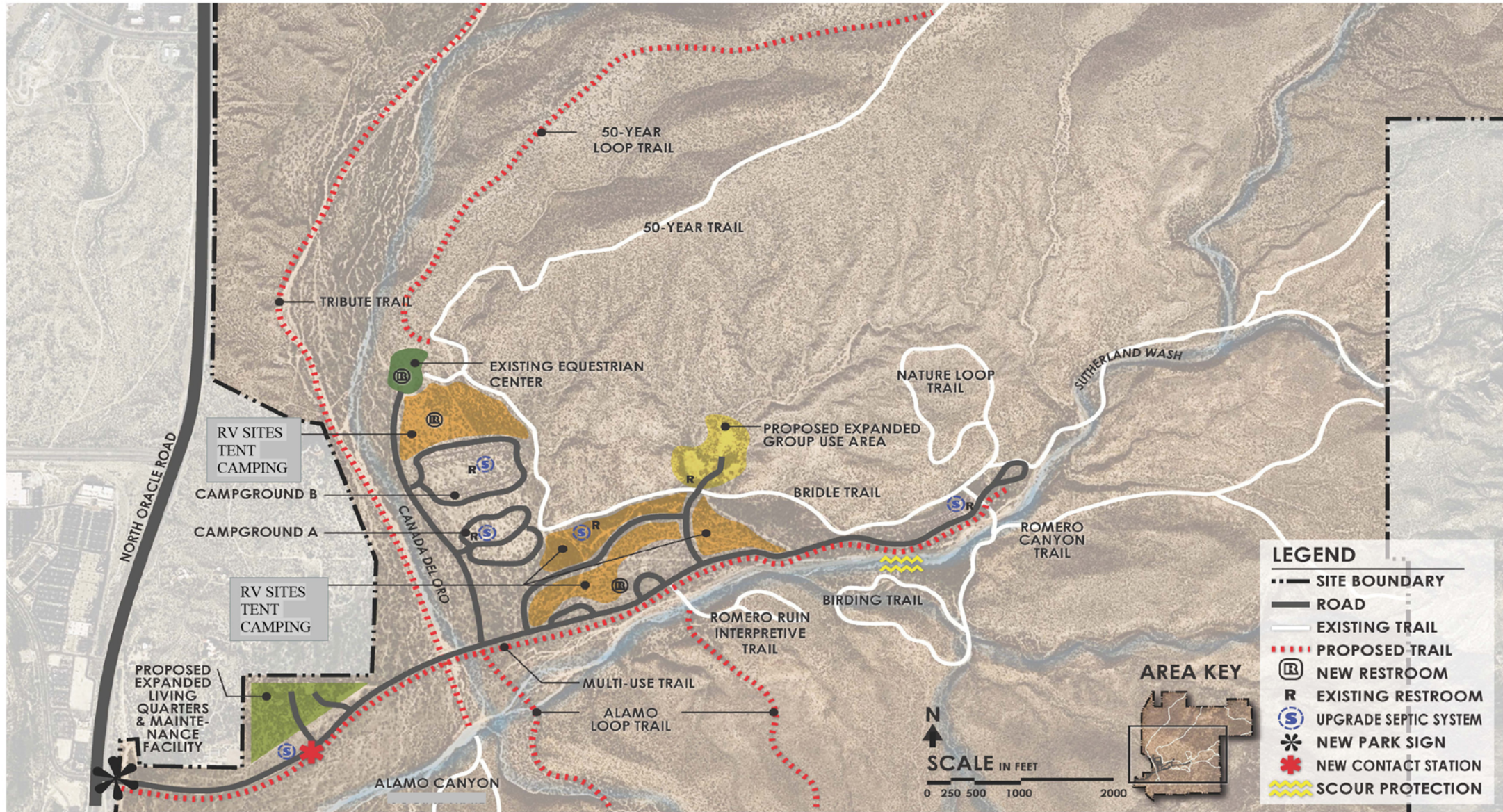


CATALINA

STATE PARK

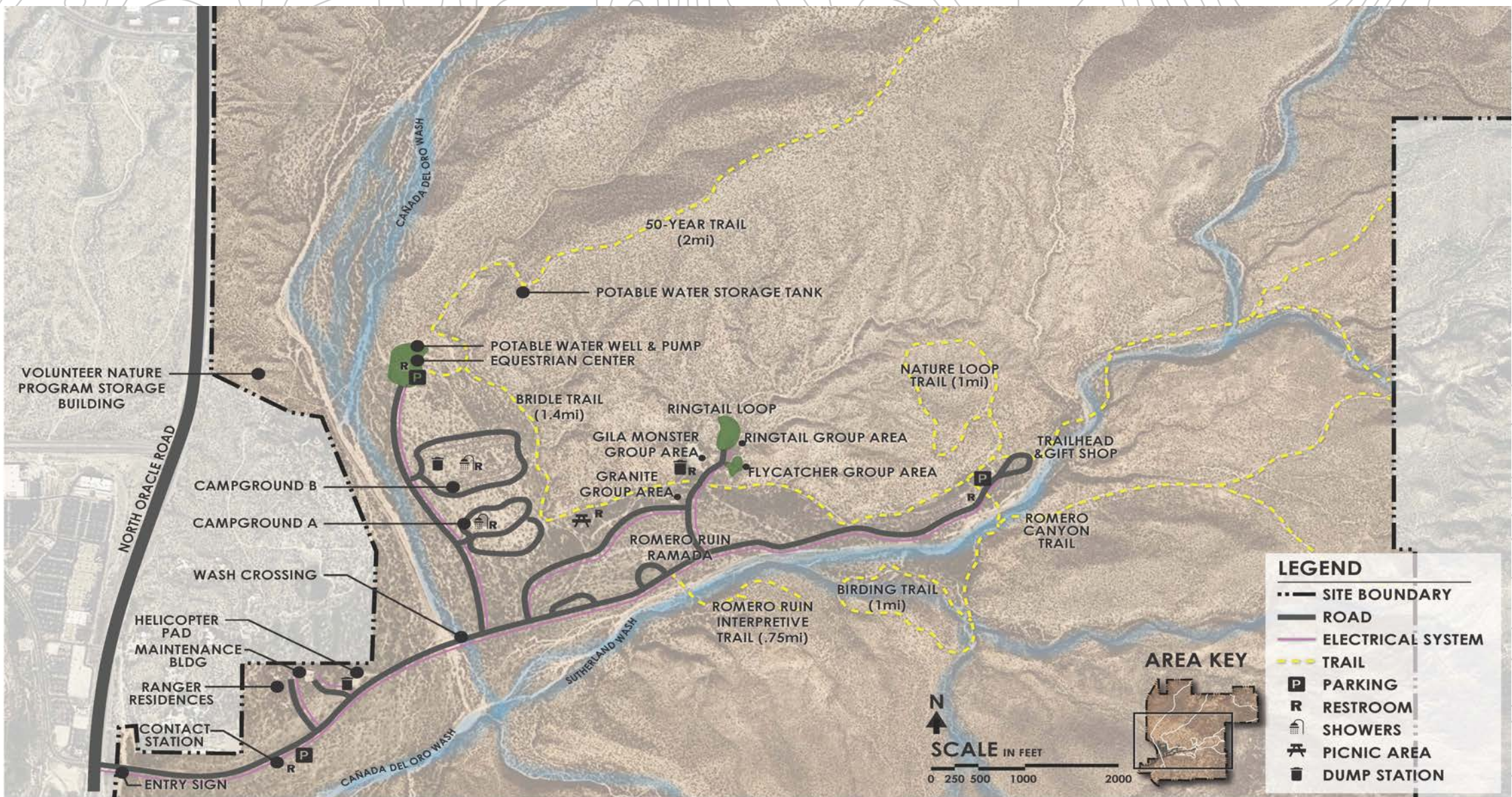
Master Plan OVERVIEW OCTOBER 2020





CATALINA STATE PARK

#7 Developed Park Area



CATALINA STATE PARK

#3 Existing Features

Monument Entry Signage



A new monument sign for the park will be designed and built at or near the existing sign location along Oracle Road, optimally closer to Oracle Road should rights-of way and easements allow. The new monument sign will (layout, materials, aesthetics) adhere to the current CNF sign plan and requirements.

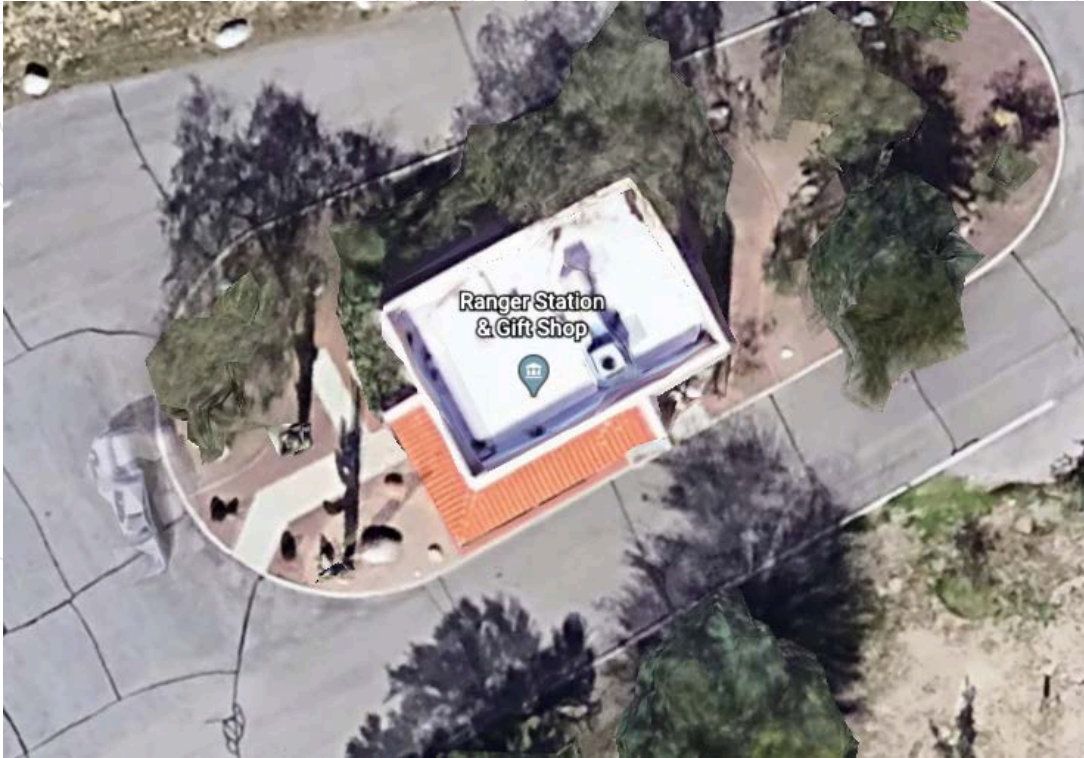
Main Park Road



Scour Protection on Main Park Road

- Sutherland Wash has eroded a section of its bank immediately adjacent to the existing main park road. If left unchecked, the degradation will worsen and undermine the roadway, resulting in an unsafe situation for park visitors. Repairs will become costlier if not addressed soon.
- Scour protection might include gabion baskets and/or rock mattresses, rebuilding the side slope and arming with rip rap, concrete cribbing, or other options yet to be determined.
- A determination will be made on the need for a Clean Water Act Section 404 permit prior to executing any work associated with this repair.
- Scour protection/bank stabilization along the main park road is a time-sensitive matter.

Contact Station & Gift Shop



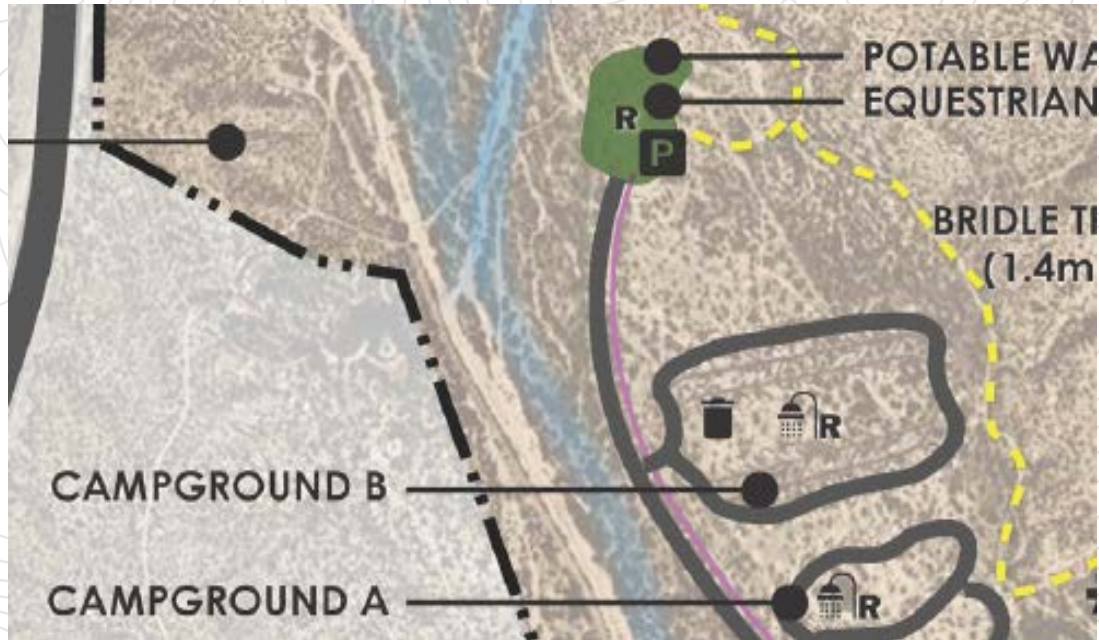
- The Contact Station is the original structure that welcomed visitors for the first time in 1983. Park staff has outgrown the existing structure and requires more office space and a larger gift shop area. Visitors will pay park entry fees, rent camp sites/RV slips or visit the gift shop for souvenirs or basic necessities. The existing structure is roughly 1,100 sf.
- The architecture of this new structure has not been developed.

Upgraded Restroom - Campground A



- The existing Campground/Restroom #1 at Campground A, needs upgrade due to termite and water damage. The new restroom building would occupy roughly the same footprint as the existing structure, with an upgraded/expanded septic system/field. The architecture of this new restroom will either remain consistent with the already existing/established restroom facilities or capitalize on the opportunity to update the architecture of the park.
- It is anticipated that any new restroom facilities will utilize low-water-use components and other sustainable materials/fixtures and construction methods.

Campsites



- Park staff sees a need to increase the number of campsites in general to align with the increase in park visitation. Non-electric campsites in particular.
- There is an available area that could be used for another campground loop located between Campground B and the Equestrian Center.

Replace Existing Vault Toilets



- The existing toilet facilities at the Equestrian Center and the Trailhead receive many complaints from park visitors due to odor.
- The existing toilet facilities will be removed, and replaced with modern, flush toilet facilities. This exercise will involve demolition of both above- and below-grade features of the facilities.
- The new facilities will deliver waste to new septic fields. Due to its proximity of the Trailhead to Sutherland Wash, the septic field associated with the Trailhead toilets will require further investigation.

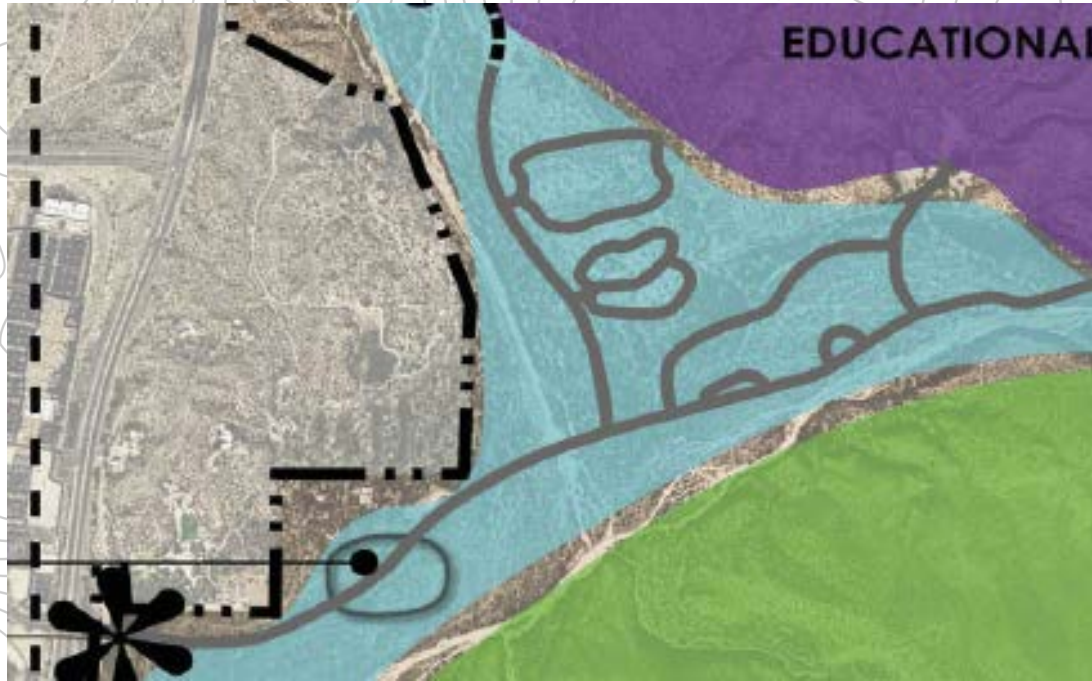
Living Quarters and Maintenance Facility



Accommodations

- An analysis of existing park infrastructure, capacity, biological and cultural concerns will be completed to ensure the existing park resources are protected and managed for any future development before any additional development proceeds.
- Proposed Living quarter expansion for staff and new maintenance facility as shown on figure #7.
- Upgraded Septic system which is in process with approved plans and approved by USFS.

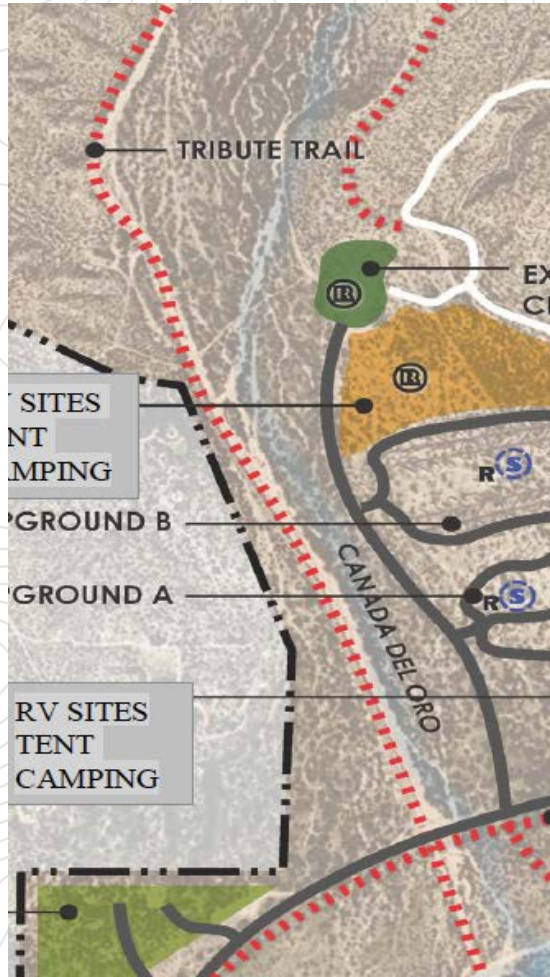
Multi Use Paved Trail



New Multiuse Paved Trail

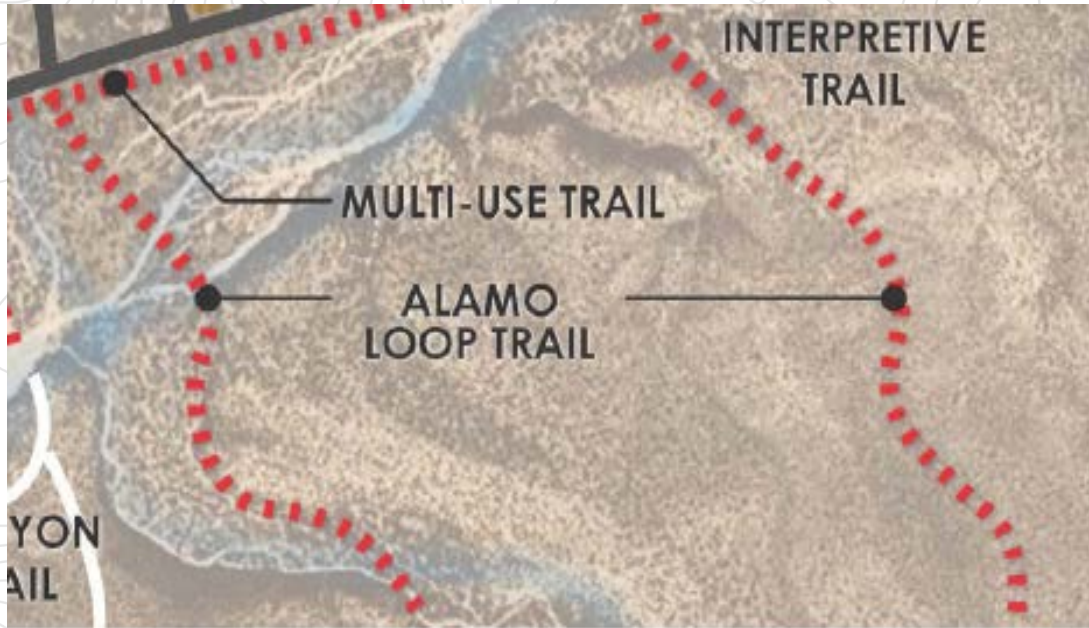
- Trail will begin at the park entrance along SR 77, following the south side of the main park road, and terminate at the existing trailhead parking lot near the Sutherland Trailhead and Trail Shop. Trail would also connect to the existing Town of Oro Valley Canada del Oro River Park Trail outside of the park's limits.
- Currently, pedestrians and bicyclists utilize the main park road to access the park and trailheads. The new trail will create a safer method for non-motorized visitors to visit and enjoy the park. The trail may include interpretive signage but will not be lighted. The seven foot wide trail will likely include crushed granite and weave its way along the 1.9-mile route to avoid impacts to on-site resources.
- Some benches and trash receptacles are anticipated along the trails at pre-determined locations.
- The western segment of this trail (along the park entry) could also align with the 50-Year Trail.

Tribute Trail



- The Tribute Trail is an attempt to accommodate Pima County's trails planning efforts, wherein the Countywide trail planned west of Oracle Road must cross Oracle Road and connect to the built section of Sutherland Trail within the CNF. The CSP entry area was a logical location for the crossing.
- Should the new multiuse paved trail be built first, it would suffice for the County's connector and would eliminate the need for the alignment shown on Figure 7, Developed Park Area.

Alamo Canyon Trail Loop



- The Alamo Loop Trail is currently a complex system of “social trails,” which are created by visitors who choose to travel outside developed trails. These social trails have damaged the existing vegetation, increasing the risk of erosion that could impact archaeological and riparian areas.
- The goal for the Alamo Canyon Loop Trail will be to establish and maintain a single trail and to rehabilitate the “social trails” disturbance back to a native landscape. This restoration has the potential to be an educational project on the rehabilitation of native landscapes.

50 Year Trail Loop

- The 50-Year Trail Loop will spur off of the main 50-Year Trail alignment and provide hikers with new and different views/vistas as well as additional changes in elevation.
- The Loop Trail will spur off the main trail just past the Equestrian Center then merge back with the main trail approximately one mile north. The two points where the trails merge are opportunities for informational signage or benches.
- The intent will be to develop this trail as part of the USFS trail system if approved by the Forest Service.

