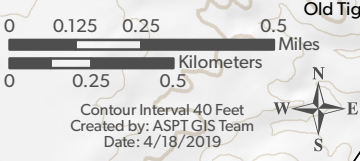


Trail Code	Trail Name	Length One Way		Uses*
		mi	km	
AZT	Arizona (Inside Park)	4.9	7.9	BDEH
AZT	Arizona (South to A.F.R.)	2.3	3.8	BDEH
BE	Bellota Loop	0.8	1.3	H
CV	Cherry Valley Wash	1.0	1.6	BDEH†
CW	Cottonwood Wash	2.1	3.4	BDEH†
FB	Firebreak	0.7	1.1	BDEH
GR	Gasline Road	2.7	4.4	BDEH
GO	Granite Overlook Loop	1.6	2.5	DH
HD	Horse Detour	1.1	1.7	BDEH†
KW	Kannally Wash	1.1	1.8	BDEH†
MN	Manzanita	2.0	3.2	BDH
MR	Mariposa	1.3	2.1	BDH
NT	Nature	1.1	1.8	BDH
PL	Power Line	3.6	5.8	BDEH
WC	Wildlife Corridor	1.6	2.6	BDH
WL	Windmill Loop	4.1	6.6	BDEH
WR	Windy Ridge Loop	1.0	1.6	H

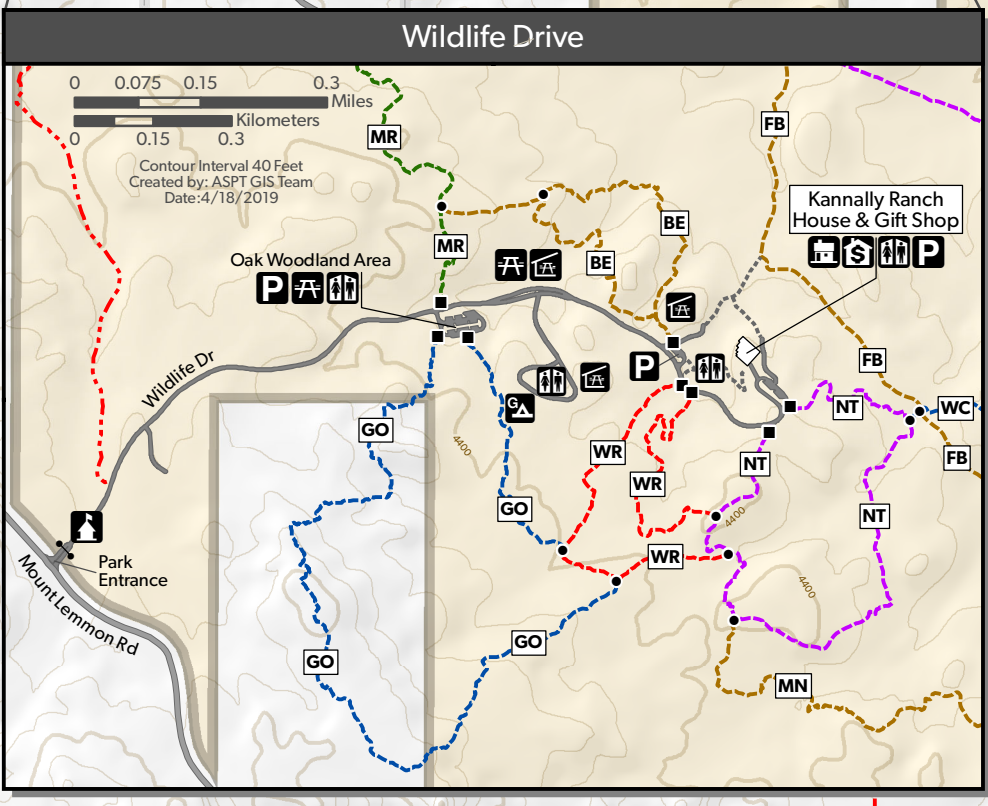
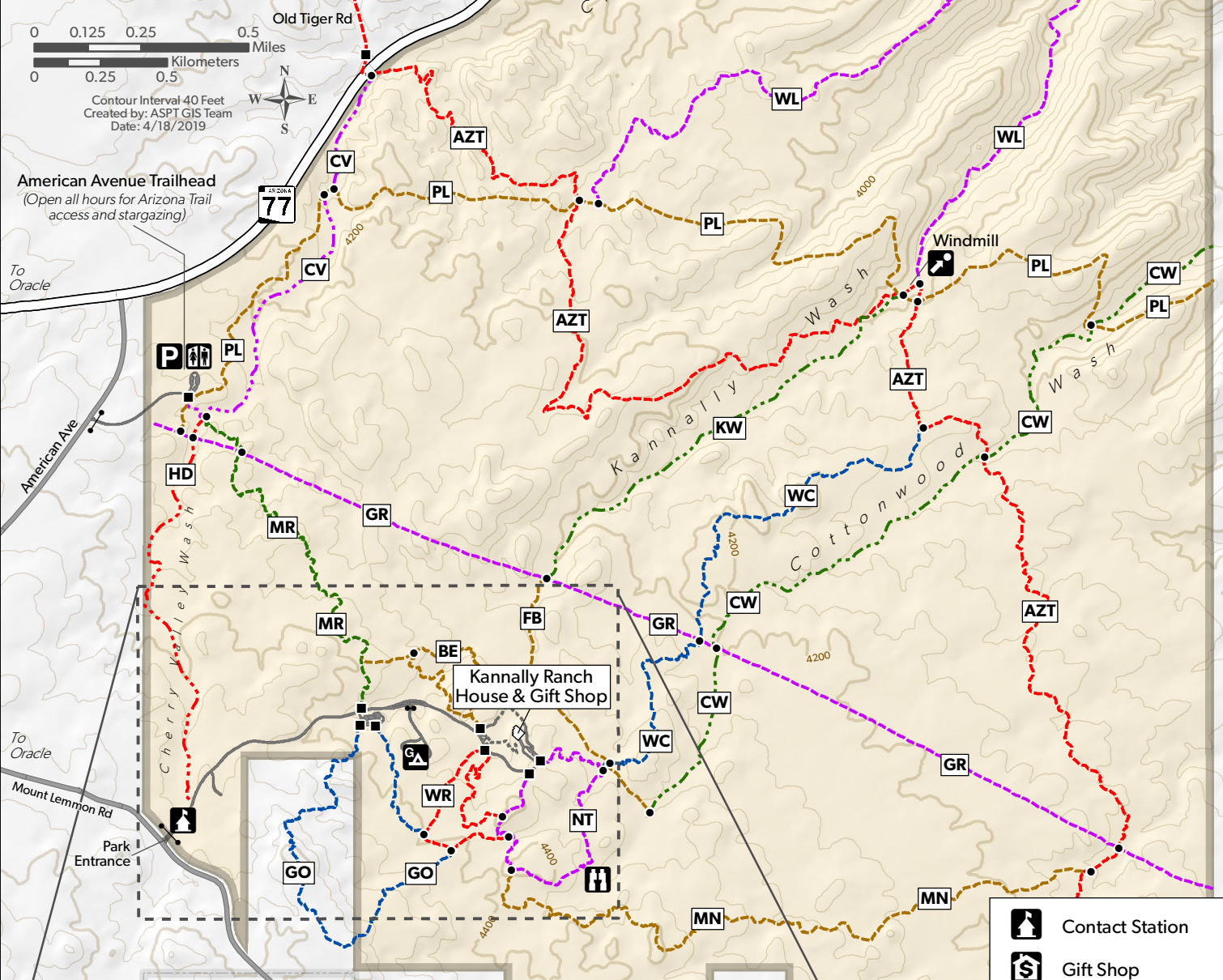
* B=Mountain Bike D=Dog E=Equestrian H=Hike

† Wash trails are unmaintained and best suited for equestrian use.

ORACLE STATE PARK



American Avenue Trailhead
(Open all hours for Arizona Trail access and stargazing)



- Contact Station
- Gift Shop
- Group Campground
- Corral
- Historic Building
- Parking
- Picnic Table
- Point of Interest
- Ramada
- Restroom
- Wildlife Viewing
- Junction
- Trailhead
- Gate
- Trail
- Unmaintained Trail
- Forest Boundary
- Park Boundary

To Mammoth
11mi
18km

To San Manuel
11mi
18km

Coronado National Forest

American Flag Ranch