



**LEGEND**

- SITE BOUNDARY**
- - - FENCE**
- - - IRRIGATION DITCH**
- ..... TRAIL**
- WILDLIFE VIEWING AREA**

- 1** PARK ENTRY
- 2** PASTURE - 35 ACRES W/ DOUBLE FENCE
- 3** POND - 1.8 ACRES W/ SPLIT RAIL FENCE
- 4** CABINS - 7 UNITS
- 5** RIVER ACCESS POINT - 2
- 6** LAWN AREA - 1.3 ACRES
- 7** GROUP CAMPING - 45 TENT SITES
- 8** OPEN SPACE - 43 ACRES



**ROCKIN' RIVER RANCH STATE PARK**

**Site Plan**

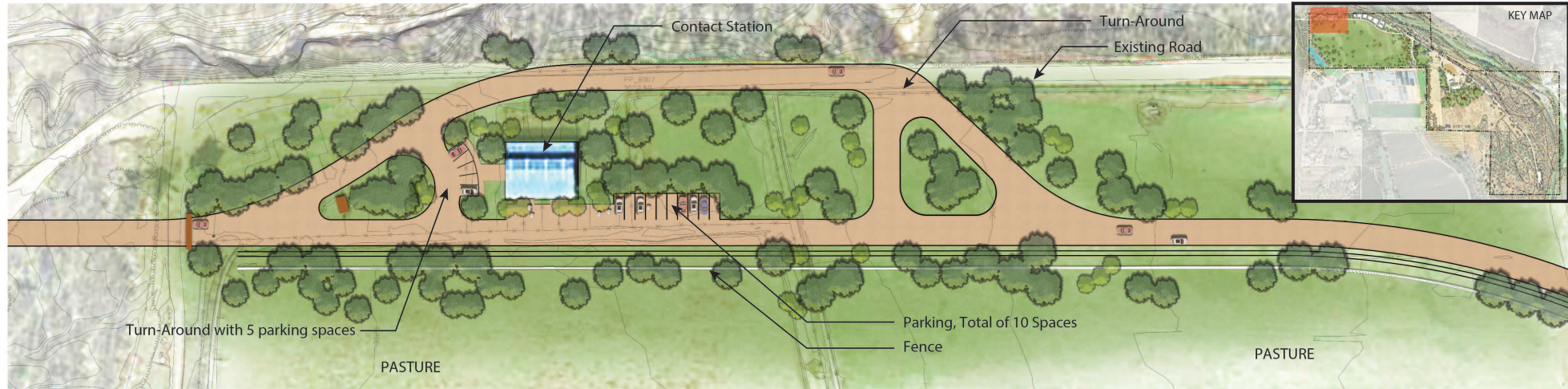
November 06, 2017

SCALE: 1" = 200'  
0 100 200 400' N



LOGANSIMPSON





ENTRY AREA

SCALE: 1" = 40'  
0 20' 40' 80'



DAY-USE PARKING

SCALE: 1" = 40'  
0 20' 40' 80'



ROCKIN' RIVER RANCH STATE PARK

Enlargement 1 - Entry Area & Day-Use Parking

November 06, 2017



LOGAN SIMPSON



