



**Pond**

**Landform:** benched terrace  
**Vegetation:** variety of heights and species  
**Distinct Built Features:** pond; unpaved road; overhead electrical lines  
**Distinct Natural Features:** mature mesquite and cottonwood trees  
**Views:** semi-enclosed by vegetation; open views to the north



**Pasture**

**Landform:** relatively flat terrain  
**Vegetation:** low, predominately grasses  
**Distinct Built Features:** unpaved roads; irrigation ditches; and fences  
**Distinct Natural Features:** none  
**Views:** open, expansive



**Ranch Development**

**Landform:** relatively flat terrain  
**Vegetation:** variety of heights, with scattered mature trees  
**Distinct Built Features:** ranch buildings and associated structures; unpaved roads; fences  
**Distinct Natural Features:** none  
**Views:** semi-enclosed by buildings/structures and mature trees



**Fallow Fields**

**Landform:** relatively flat  
**Vegetation:** low, predominately seasonal grasses  
**Distinct Built Features:** none  
**Distinct Natural Features:** none  
**Views:** open, expansive



**River/Riparian**

**Landform:** linear river corridor  
**Vegetation:** tall, predominately cottonwoods  
**Distinct Built Features:** none  
**Distinct Natural Features:** Verde River; riparian vegetation; rock outcrops  
**Views:** enclosed by vegetation; limited to river corridor



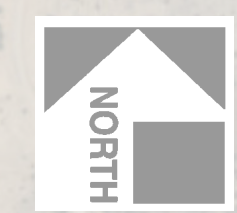
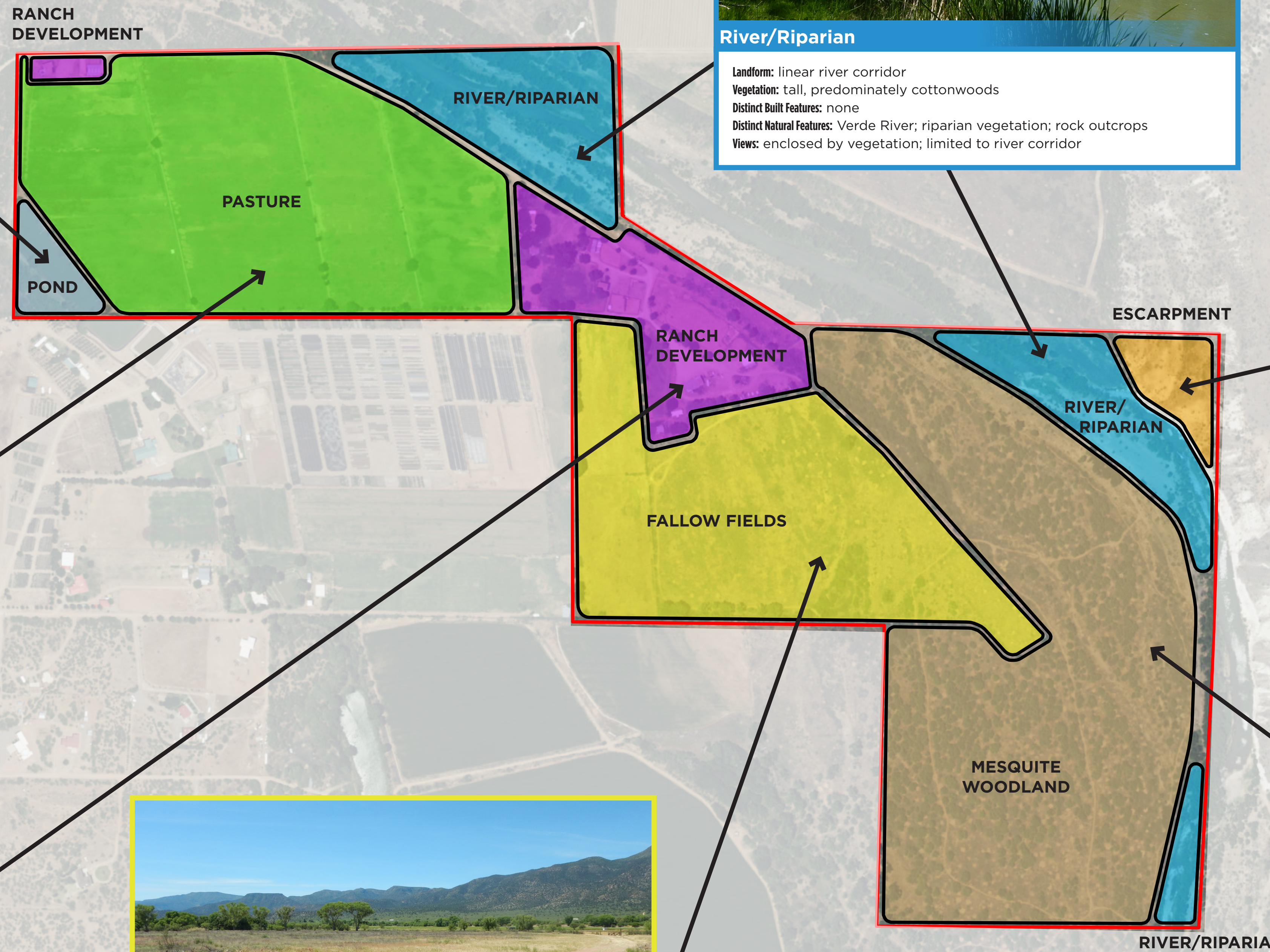
**Escarpment**

**Landform:** escarpment  
**Vegetation:** sparse low shrubs  
**Distinct Built Features:** none  
**Distinct Natural Features:** escarpment, white limestone soils  
**Views:** open, expansive



**Mesquite Woodland**

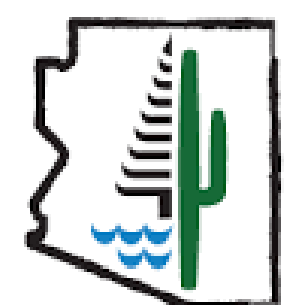
**Landform:** relatively flat to gently rolling  
**Vegetation:** variety of heights; predominately mesquite trees and seasonal grasses  
**Distinct Built Features:** none  
**Distinct Natural Features:** mesquite trees  
**Views:** enclosed by vegetation



Mile

0 0.25

Source: Esri, DigitalGlobe, GeoEye, Earthstar Geographics, CNES/Airbus DS, USDA, USGS, AeroGRID, IGN, and the GIS User Community



# ROCKIN' RIVER RANCH STATE PARK

## Existing Visual Landscape Characteristics



L O G A N S I M P S O N