

APPENDICES

A. List of Land and Water Conservation Fund (LWCF) Projects in Arizona

B. List of Local, Regional and State Parks (LRSP) Heritage Fund Projects in Arizona

C. Color Maps

Figure 1. Arizona Landforms

Figure 2. Arizona Land Ownership

Figure 5. National Parks and Arizona State Parks

Figure 7. Arizona Wilderness Areas and Other Federal Designations

Figure 8. Arizona Boatable Lakes and Streams

LWCF GRANT RECIPIENT	PROJECT TITLE	GRANT YEAR	COUNTY	LWCF AWARD	TOTAL PROJ COST
Apache County					
Apache County	Apache County Courts	1980	Apache	\$84,159	\$168,318
Arizona State Parks	Lyman Lake State Park	1967	Apache	\$6,616	\$13,232
Eagar	Eagar Town Park	1973	Apache	\$5,000	\$10,000
Eagar	Round Valley Recreation Complex	1985	Apache	\$52,000	\$104,000
Eagar	Racquet Sports Complex Acquisition	2007	Apache	\$148,995	\$297,990
Pinetop-Lakeside	Woodland Park Active Recreation	1987	Apache	\$43,238	\$86,476
Springerville	Springerville Town Park	1973	Apache	\$10,000	\$20,000
Springerville	Springerville Lighting Project	1980	Apache	\$18,870	\$37,740
Springerville	Springerville Park Improvements	1983	Apache	\$18,109	\$36,218
St. Johns	Apache County Ball Park	1974	Apache	\$42,873	\$85,745
St. Johns	Development Of City Park	1976	Apache	\$100,981	\$201,962
St. Johns	St. Johns Park Land Acquisition	1979	Apache	\$15,000	\$30,000
St. Johns	St. Johns Pool Expansion	1979	Apache	\$125,000	\$250,000
St. Johns	St. Johns Handball Courts	1981	Apache	\$18,200	\$36,400
St. Johns	Park Improvements	1984	Apache	\$26,350	\$52,700
St. Johns	St. Johns Fairground Improvements	1985	Apache	\$27,527	\$55,054
St. Johns	St. Johns Park Ramada	1986	Apache	\$10,000	\$20,000
St. Johns	Baseball Field Development	1986	Apache	\$35,200	\$70,400
St. Johns	Airport Park Restrooms/Ramadas	1989	Apache	\$25,860	\$51,720
Cochise County					
Arizona State Parks	Patagonia Lake	2005	Cochise	\$517,269	\$1,034,538
Benson	Benson Athletic Field	1978	Cochise	\$7,769	\$15,537
Benson	Park & Picnic Expansion	1979	Cochise	\$6,434	\$12,867
Benson	Lions Park Development	1991	Cochise	\$68,000	\$136,000
Bisbee	Bisbee Municipal Swimming Pool	1967	Cochise	\$47,500	\$95,000
Douglas	8th St. Park Swimming Pool	1976	Cochise	\$160,000	\$320,000
Douglas	Vet. Memorial Park Baseball Field	1978	Cochise	\$14,967	\$29,934
Douglas	Veterans Memorial Tennis Courts	1978	Cochise	\$54,029	\$108,057
Douglas	15th Street Park Little League Base	1979	Cochise	\$13,674	\$27,347
Douglas	Copperking Baseball Field Lighting	1980	Cochise	\$63,276	\$126,553
Douglas	Softball Field Development Phase I	1980	Cochise	\$6,000	\$12,000
Douglas	Construct Handball/Racquetball Courts	1980	Cochise	\$25,000	\$50,000
Douglas	Playground Equipment	1980	Cochise	\$2,500	\$4,999
Douglas	Veteran's Park Softball Relighting	1983	Cochise	\$7,000	\$14,000
Douglas	Veterans Park Tennis Courts Relighting	1983	Cochise	\$3,194	\$6,388
Douglas	Termite Field Lighting Improvement	1985	Cochise	\$5,500	\$11,000
Douglas	15th Street Softball Field Lighting	1986	Cochise	\$20,934	\$41,868
Huachuca City	Huachuca City Tennis Courts	1978	Cochise	\$14,638	\$29,277
Sierra Vista	Veterans Memorial Park	1968	Cochise	\$88,501	\$177,002
Sierra Vista	Veterans Memorial Park	1971	Cochise	\$32,832	\$65,664
Sierra Vista	Veterans Memorial Park	1973	Cochise	\$31,727	\$63,455
Sierra Vista	Bella Vista Neighborhood Park	1973	Cochise	\$3,521	\$7,042
Sierra Vista	Baseball Field Lighting	1980	Cochise	\$41,419	\$82,838
Sierra Vista	Civic Center Complex Ballfields	1983	Cochise	\$34,029	\$68,057
Sierra Vista	Little League/Multi-Purpose Fields	1985	Cochise	\$106,600	\$213,200
Sierra Vista	Sierra Vista Park Acquisition	1985	Cochise	\$71,875	\$143,750
Tombstone	New City Park	1967	Cochise	\$5,000	\$10,000
Willcox	Willcox Recreation Complex	1966	Cochise	\$100,000	\$200,000

LWCF GRANT RECIPIENT	PROJECT TITLE	GRANT YEAR	COUNTY	LWCF AWARD	TOTAL PROJ COST
Willcox	Willcox Lighted Ballfield Development	1978	Cochise	\$36,958	\$73,916
Willcox	Quail Drive Sports Park Improvements	2000	Cochise	\$109,361	\$218,722
Coconino County					
AZ Game & Fish Dept	Willow Springs Lake	1966	Coconino	\$154,825	\$309,650
Arizona State Parks	Slide Rock Picnic Improvements	1989	Coconino	\$72,000	\$144,000
Arizona State Parks	Slide Rock Water & Waste Treatment	1992	Coconino	\$63,000	\$126,000
Arizona State Parks	Slide Rock Park Improvements	2007	Coconino	\$174,070	\$1,663,523
Arizona State Parks	Slide Rock Park Improvements	2008	Coconino	\$132,458	\$264,916
Flagstaff	Municipal Artificial Ice Rink	1970	Coconino	\$99,000	\$198,000
Flagstaff	Thorpe City Softball Lighting	1971	Coconino	\$28,982	\$57,964
Flagstaff	Pine Park Manor	1972	Coconino	\$39,923	\$79,845
Flagstaff	Three Parks Project	1972	Coconino	\$7,000	\$14,000
Flagstaff	Thorpe Park Ramada & Bleachers Proj.	1972	Coconino	\$9,114	\$18,229
Flagstaff	Pine Manor Park	1973	Coconino	\$40,000	\$80,000
Flagstaff	Bushmaster Park Development	1975	Coconino	\$68,500	\$137,000
Flagstaff	Flagstaff Tennis/Handball Courts.	1978	Coconino	\$63,104	\$126,208
Flagstaff	Tennis Courts - Cheshire Park	1979	Coconino	\$29,240	\$58,480
Flagstaff	Tennis Court Lighting	1979	Coconino	\$23,092	\$46,184
Flagstaff	Turquoise Tennis Court Renovation	1979	Coconino	\$29,800	\$59,600
Flagstaff	Thorpe Park Playground Improvement	1979	Coconino	\$12,000	\$24,000
Flagstaff	Fox Glen Recreation Complex	1980	Coconino	\$122,097	\$244,195
Flagstaff	Bicycle Trail Development	1981	Coconino	\$3,467	\$6,934
Flagstaff	Ponderosa Park	1981	Coconino	\$34,341	\$68,682
Flagstaff	Thorpe Park Ballfield	1984	Coconino	\$9,977	\$19,953
Flagstaff	Foxglen Park Multi-Use Field	1987	Coconino	\$48,719	\$97,438
Flagstaff	Flagstaff Trail System	1990	Coconino	\$47,928	\$95,856
Flagstaff	Flagstaff Urban Trails System/Birch to B	1991	Coconino	\$47,600	\$95,200
Flagstaff	East Flagstaff Youth Sports Complex	1993	Coconino	\$36,744	\$73,489
Fredonia	Fredonia Swimming Pool Repair	1978	Coconino	\$40,000	\$80,000
Fredonia	Fredonia Double Tennis Courts	1981	Coconino	\$22,000	\$44,000
Fredonia	Fredonia Little League Field Dev.	1985	Coconino	\$11,414	\$22,827
Page	Aspen Tennis Center, Golliard Park	1979	Coconino	\$97,500	\$195,000
Williams	Ballpark Improvement Project	1977	Coconino	\$8,174	\$16,348
Williams	Williams Tennis Lighting	1979	Coconino	\$2,175	\$4,350
Williams	Williams City Park Multiple Use Facility	1985	Coconino	\$27,000	\$54,000
Gila County					
AZ Game & Fish Dept	Canyon Creek Fish Hatchery	1968	Gila	\$266,800	\$533,600
AZ Game & Fish Dept	Tonto Creek Fish Hatchery Renovation	1985	Gila	\$212,200	\$424,400
Globe	Globe/Miami Rec. Dev. Phase I	1977	Gila	\$113,994	\$227,988
Globe	Community Park Development	1984	Gila	\$44,874	\$89,748
Globe	Globe Botanical Park	1991	Gila	\$69,736	\$139,472
Globe	Community Park Pool Improvements	2003	Gila	\$17,941	\$35,882
Hayden	Hastings Park & G. C. Dev.	1978	Gila	\$27,797	\$55,594
Miami	Hostetler Pool Dev	1970	Gila	\$10,440	\$20,880
Miami	Swimming Pool Renovation	1983	Gila	\$22,085	\$44,169
Miami	Miami Basketball Court	1993	Gila	\$23,344	\$46,687
Payson	Rumsey Park Acq/Dev	1976	Gila	\$191,648	\$383,295
Payson	Payson Municipal Pool	1985	Gila	\$200,000	\$400,000
Graham County					

LWCF GRANT RECIPIENT	PROJECT TITLE	GRANT YEAR	COUNTY	LWCF AWARD	TOTAL PROJ COST
Arizona State Parks	Roper Lake S. P. - Dankworth Unit	1978	Graham	\$72,563	\$145,125
Graham County	Graham County Reg. Park	1976	Graham	\$49,601	\$99,201
Graham County	Graham Co. MU Recreation Field	1980	Graham	\$124,532	\$249,065
Graham County	Open Space Activity Area	1984	Graham	\$17,500	\$35,000
Graham County	Pueblo Viejo Park	1990	Graham	\$34,617	\$69,234
Safford	Mt. Graham Golf Course	1967	Graham	\$57,000	\$114,000
Safford	Mt. Graham Golf Course Expansion	1972	Graham	\$89,700	\$179,400
Safford	Glenn Meadows Park	1980	Graham	\$55,165	\$110,330
Safford	Dry Lake Park Development	1986	Graham	\$10,772	\$21,545
Safford	Multi-Use Path Development	2000	Graham	\$62,552	\$125,104
Greenlee County					
Duncan	Duncan Community Park	1990	Greenlee	\$20,000	\$40,000
Greenlee County	Morenci Town Park A&D	1989	Greenlee	\$75,000	\$150,000
La Paz County					
Arizona State Parks	Red Rock Unit	1967	La Paz	\$98,991	\$197,983
Arizona State Parks	Buckskin Mountain State Park	1970	La Paz	\$10,694	\$21,387
Arizona State Parks	Buckskin Point Unit	1971	La Paz	\$17,548	\$35,097
Arizona State Parks	Restrooms & Cabanas Buckskin Pt.	1972	La Paz	\$39,792	\$79,585
La Paz County	La Paz County Park	1973	La Paz	\$21,437	\$42,874
Parker	Community Park	1968	La Paz	\$22,609	\$45,219
Parker	Parker Community Park Phase II	1969	La Paz	\$10,000	\$20,000
Parker	Parker Community Park-Phase III	1970	La Paz	\$16,442	\$32,884
Parker	Parker Western Park	1973	La Paz	\$7,500	\$15,000
Parker	Swimming Pool	1976	La Paz	\$255,348	\$510,696
Parker	Town Park Ballfield Relighting	1983	La Paz	\$13,944	\$27,888
Maricopa County					
AZ Board of Regents	ASU West Community Park	2003	Maricopa	\$500,000	\$1,000,000
AZ Game & Fish Dept	Black Canyon Shooting Range	1967	Maricopa	\$27,658	\$55,316
AZ Game & Fish Dept	Black Canyon Shooting Range	1968	Maricopa	\$111,577	\$223,153
Arizona State Parks	State Outdoor Recreation Plan	1965	Maricopa	\$33,350	\$66,699
Arizona State Parks	Outdoor Rec. Plan Maintenance	1969	Maricopa	\$12,850	\$25,700
Arizona State Parks	Arizona SCORP Project No. 2	1971	Maricopa	\$48,979	\$97,958
Arizona State Parks	Statewide Bicycle & Foot Pathway	1973	Maricopa	\$31,557	\$63,114
Arizona State Parks	Arizona State Park Plans	1973	Maricopa	\$20,000	\$40,000
Arizona State Parks	Arizona SCORP Update	1976	Maricopa	\$84,780	\$169,560
Arizona State Parks	SCORP Planning Process, Addendum I	1979	Maricopa	\$200,000	\$400,000
Arizona State Parks	1989 Arizona SCORP	1986	Maricopa	\$100,000	\$200,000
Arizona State Parks	1994 Arizona SCORP	1991	Maricopa	\$135,000	\$270,000
Avondale	Mountainview Park Development	1970	Maricopa	\$8,745	\$17,490
Avondale	Cashion Park Lighting & Rec Equip	1979	Maricopa	\$30,000	\$60,000
Avondale	Avondale Park Acq. & Dev.	1979	Maricopa	\$50,579	\$101,157
Avondale	Coldwater Park Lighting & RR Dev.	1991	Maricopa	\$55,355	\$110,710
Buckeye	Buckeye Skate Park	2003	Maricopa	\$35,000	\$70,000
Chandler	Navarette Park Development	1973	Maricopa	\$2,283	\$4,565
Chandler	Arrowhead Meadows Park Dev.	1973	Maricopa	\$15,817	\$31,634
Chandler	Armstrong Memorial Park Dev.	1973	Maricopa	\$2,200	\$4,400
Chandler	Knox Acquisition	1974	Maricopa	\$25,000	\$50,000
Chandler	Chandler Tennis Courts	1975	Maricopa	\$22,500	\$45,000
Chandler	Folley Memorial Park Development	1975	Maricopa	\$125,000	\$250,000

LWCF GRANT RECIPIENT	PROJECT TITLE	GRANT YEAR	COUNTY	LWCF AWARD	TOTAL PROJ COST
Chandler	E. Neighborhood Park Phase I	1976	Maricopa	\$25,000	\$50,000
Chandler	Knox Property, Phase I Dev.	1976	Maricopa	\$95,341	\$190,682
Chandler	Oakland Tennis Courts	1978	Maricopa	\$11,415	\$22,830
Chandler	Arrowhead Pool	1978	Maricopa	\$251,970	\$503,940
Chandler	Folley Park Ballfield Lighting	1979	Maricopa	\$65,527	\$131,054
Chandler	Chandler Acquisition and Development	1980	Maricopa	\$147,400	\$294,800
Chandler	Shawnee Park Phase I	1983	Maricopa	\$81,750	\$163,500
Chandler	Pima Park Phase II	1983	Maricopa	\$60,000	\$120,000
Chandler	Hoopes Park Phase I	1983	Maricopa	\$42,900	\$85,800
Chandler	Chandler Retention Parks Improvement	1985	Maricopa	\$27,450	\$54,900
Chandler	Chandler Recreation Lighting	1985	Maricopa	\$4,500	\$9,000
El Mirage	El Mirage Park Renovation	1988	Maricopa	\$7,154	\$14,307
Fountain Hills	Development of Fountain Park: Phase II	2001	Maricopa	\$237,307	\$1,496,650
Gila Bend	Community Tennis Courts	1978	Maricopa	\$13,549	\$27,098
Gila Bend	Parks Improvement	1979	Maricopa	\$14,498	\$28,996
Gilbert	Lindsey Road Reg. Park (Freestone)	1987	Maricopa	\$75,000	\$150,000
Glendale	Thunderbird Park Water System	1967	Maricopa	\$31,000	\$62,000
Glendale	Rose Lane & O'Neil Parks	1968	Maricopa	\$7,312	\$14,624
Glendale	Thunderbird Rec. Area	1970	Maricopa	\$50,900	\$101,800
Glendale	Glendale Recreation Facilities	1971	Maricopa	\$83,984	\$167,969
Glendale	Glendale-Apollo Swimming Pool	1973	Maricopa	\$111,723	\$223,447
Glendale	Ballfield Lighting at Apollo H.S.	1974	Maricopa	\$34,961	\$69,922
Glendale	Thunderbird Development Phase I	1974	Maricopa	\$98,983	\$197,967
Glendale	Sahuaro Ranch Park	1975	Maricopa	\$385,156	\$770,312
Glendale	Glendale Union H.S. Lighting	1976	Maricopa	\$24,347	\$48,694
Glendale	Bicentennial School Lighting	1977	Maricopa	\$11,257	\$22,514
Glendale	Kachina School Lighting	1977	Maricopa	\$9,438	\$18,877
Glendale	Glendale Park Development	1977	Maricopa	\$229,711	\$459,421
Glendale	Tierra Buena Court Lighting	1977	Maricopa	\$3,000	\$6,000
Glendale	Glendale H.S. Swim Pool & Bathhouse	1978	Maricopa	\$230,386	\$460,772
Glendale	Sands Park Development	1978	Maricopa	\$61,904	\$123,809
Glendale	Cactus High School Swimming Pool	1979	Maricopa	\$233,750	\$467,500
Glendale	Relamping Rose Lane & O'Neil Parks	1979	Maricopa	\$23,583	\$47,165
Glendale	Cholla Park Recreation Facilities	1980	Maricopa	\$95,947	\$191,894
Glendale	Development Of Tierra Buena Park	1981	Maricopa	\$78,853	\$157,705
Glendale	Heritage School Ballfield Lights	1981	Maricopa	\$14,000	\$28,000
Glendale	Development Of Rose Lane Park	1981	Maricopa	\$43,131	\$86,262
Glendale	Sahuaro Ranch Park Development	1983	Maricopa	\$303,821	\$607,642
Glendale	Western Glendale Reg. Park: Phase II	2005	Maricopa	\$192,675	\$385,350
Goodyear	Goodyear Tennis Court Development	1975	Maricopa	\$13,375	\$26,749
Goodyear	Development Of Goodyear Parks	1976	Maricopa	\$14,000	\$28,000
Goodyear	Goodyear Park Development	1977	Maricopa	\$10,000	\$20,000
Goodyear	Tennis Lighting Loma Linda Park	1979	Maricopa	\$4,490	\$8,979
Goodyear	Community Park	2003	Maricopa	\$638,732	\$1,277,464
Guadalupe	Community Park Development	1976	Maricopa	\$37,135	\$74,270
Guadalupe	Biehn Colony Ballfield Lighting	1979	Maricopa	\$34,730	\$69,460
Guadalupe	Biehn Colony Park Improvements	1989	Maricopa	\$6,250	\$12,500
Maricopa County	Sun Circle Trail	1966	Maricopa	\$21,627	\$43,254
Maricopa County	Lake Pleasant Development	1967	Maricopa	\$31,500	\$63,000

LWCF GRANT RECIPIENT	PROJECT TITLE	GRANT YEAR	COUNTY	LWCF AWARD	TOTAL PROJ COST
Maricopa County	Lake Pleasant Development II	1968	Maricopa	\$144,000	\$288,000
Maricopa County	Casey Abbott Rec. Area	1970	Maricopa	\$65,983	\$131,966
Maricopa County	Buckeye Hills Recreation Area	1971	Maricopa	\$50,000	\$100,000
Maricopa County	McDowell Mountain Regional Park	1971	Maricopa	\$48,933	\$97,866
Maricopa County	White Tank Mountain Regional Park	1971	Maricopa	\$14,990	\$29,980
Maricopa County	Buckeye Hills Rec Area	1972	Maricopa	\$3,627	\$7,253
Maricopa County	White Tank Mountain Regional Park	1972	Maricopa	\$184,741	\$369,481
Maricopa County	Lake Pleasant Regional Park Phase 4	1972	Maricopa	\$56,977	\$113,953
Maricopa County	Usery Mountain Recreation Area	1973	Maricopa	\$36,000	\$72,000
Maricopa County	Buckhorn Family Campground	1974	Maricopa	\$53,216	\$106,433
Maricopa County	Casey Abbott Dev, Phase II	1976	Maricopa	\$156,239	\$312,478
Maricopa County	Casey Abbott Dev.	1977	Maricopa	\$142,317	\$284,634
Maricopa County	McDowell Mtn. Park II	1977	Maricopa	\$199,246	\$398,491
Maricopa County	Casey Abbott Horse Arena	1978	Maricopa	\$318,934	\$637,867
Maricopa County	White Tank Min. Park, III	1978	Maricopa	\$278,766	\$557,533
Maricopa County	Recreation Lighting Pendergast School	1979	Maricopa	\$32,726	\$65,451
Maricopa County	Aguila Community Park, Phase I	1979	Maricopa	\$59,000	\$118,000
Maricopa County	Ballfields, Lighting at Laveen School	1979	Maricopa	\$62,500	\$125,000
Maricopa County	Agua Fria H.S Recreational Imp.	1980	Maricopa	\$21,327	\$42,654
Maricopa County	Laveen Recreational Facilities	1980	Maricopa	\$64,727	\$129,454
Maricopa County	Dunivant Park III	1986	Maricopa	\$41,547	\$83,094
Maricopa County	Theme Playground Development	1986	Maricopa	\$62,180	\$124,360
Mesa	Kino Swimming Pool	1968	Maricopa	\$68,000	\$136,000
Mesa	Fitch Park	1970	Maricopa	\$76,947	\$153,893
Mesa	Reed Park	1970	Maricopa	\$75,454	\$150,908
Mesa	Kleinman Park/SW Mesa	1971	Maricopa	\$66,000	\$132,000
Mesa	Reed Park Phase II	1971	Maricopa	\$89,168	\$178,337
Mesa	Fitch Park Phase II	1971	Maricopa	\$85,396	\$170,791
Mesa	Evergreen Park Development	1972	Maricopa	\$2,994	\$5,987
Mesa	Playground Equip. at Mesa Parks	1972	Maricopa	\$6,250	\$12,500
Mesa	Red Mountain Park (Fmrly Palo Verde)	1972	Maricopa	\$34,060	\$68,121
Mesa	Powell/Eisenhower Schools Ballfields	1972	Maricopa	\$11,994	\$23,987
Mesa	Development at Four Mesa Parks	1973	Maricopa	\$15,810	\$31,619
Mesa	Kleinman Park	1974	Maricopa	\$53,666	\$107,332
Mesa	Greenfield Park	1975	Maricopa	\$39,690	\$79,380
Mesa	Fremont Pool	1975	Maricopa	\$150,000	\$300,000
Mesa	Poston Junior High School Lighting	1977	Maricopa	\$22,000	\$44,000
Mesa	Park Of The Canals	1977	Maricopa	\$55,888	\$111,776
Mesa	S. Greenfield Rd. Park	1977	Maricopa	\$25,000	\$50,000
Mesa	Jefferson Park Site	1978	Maricopa	\$187,772	\$375,545
Mesa	S. W. Park Development	1978	Maricopa	\$50,000	\$100,000
Mesa	Neighborhood Parks Improvement	1979	Maricopa	\$44,807	\$89,614
Mesa	Dev. Of Dobson Ranch Park	1979	Maricopa	\$100,000	\$200,000
Mesa	Development Of Northwest Park	1979	Maricopa	\$150,000	\$300,000
Mesa	Riverview Park Development Phase II	1980	Maricopa	\$194,665	\$389,331
Mesa	Greenfield Park Development, Phase I	1980	Maricopa	\$75,000	\$150,000
Mesa	Carriage Lane Park Development Ph. I	1980	Maricopa	\$25,000	\$50,000
Mesa	Neighborhood Park Development Ph.	1980	Maricopa	\$27,992	\$55,983
Mesa	Dobson Ranch Park Development	1980	Maricopa	\$139,307	\$278,613

LWCF GRANT RECIPIENT	PROJECT TITLE	GRANT YEAR	COUNTY	LWCF AWARD	TOTAL PROJ COST
Mesa	Kleinman Park Development	1980	Maricopa	\$48,698	\$97,395
Mesa	Carriage Lane Park Dev. Phase III	1981	Maricopa	\$51,272	\$102,544
Mesa	Emerald Park Development Phase I	1981	Maricopa	\$27,641	\$55,282
Mesa	Greenfield Park/Dev. Phase III	1981	Maricopa	\$19,691	\$39,382
Mesa	Mountain View Park Development Ph I	1981	Maricopa	\$26,000	\$52,000
Mesa	Riverview Park Dev. - Phase III	1981	Maricopa	\$54,150	\$108,300
Mesa	Sherwood Manor Park Dev. Phase I	1981	Maricopa	\$26,000	\$52,000
Mesa	Dobson Ranch Park Improvements	1983	Maricopa	\$35,615	\$71,230
Mesa	Pioneer Park	1985	Maricopa	\$37,750	\$75,500
Mesa	Kingsborough Park Phase III	1985	Maricopa	\$13,000	\$26,000
Mesa	Sherwood Park Phase III	1985	Maricopa	\$27,520	\$55,039
Mesa	Fitch Park Rehabilitation	1986	Maricopa	\$60,000	\$120,000
Mesa	Park Of The Canals III	1986	Maricopa	\$27,750	\$55,500
Mesa	Augusta Ranch Park Development	2002	Maricopa	\$394,439	\$839,233
Peoria	Peoria Park Acquisition & Development	1973	Maricopa	\$22,421	\$44,842
Peoria	Peoria Parks Development	1978	Maricopa	\$265,000	\$530,000
Peoria	Kiwanis Park	1984	Maricopa	\$92,500	\$185,000
Peoria	75th Ave. & Greenway Park	2002	Maricopa	\$500,000	\$1,000,000
Phoenix	Squaw Peak Park	1966	Maricopa	\$103,153	\$206,305
Phoenix	South Mountain Park	1966	Maricopa	\$28,000	\$56,000
Phoenix	Cortez Canal Bank Park	1967	Maricopa	\$62,736	\$125,472
Phoenix	Roadrunner Park Development	1967	Maricopa	\$149,000	\$298,000
Phoenix	North Mountain Park	1967	Maricopa	\$60,000	\$120,000
Phoenix	Papago Regional Park	1967	Maricopa	\$105,000	\$210,000
Phoenix	Roeser Road Park	1967	Maricopa	\$100,962	\$201,923
Phoenix	Camelback Mountain	1968	Maricopa	\$165,585	\$331,170
Phoenix	Cortez Park Development	1969	Maricopa	\$135,271	\$270,541
Phoenix	Paradise Valley Urban Park	1969	Maricopa	\$108,133	\$216,266
Phoenix	Sueno Park, 43rd Ave & Encanto	1970	Maricopa	\$95,520	\$191,040
Phoenix	Palma Park, 11th Street and Townley	1971	Maricopa	\$76,250	\$152,500
Phoenix	Desert West Park, 63rd Ave/ Encanto	1971	Maricopa	\$104,348	\$208,695
Phoenix	Ma-Ha-Tuak Park, 7th Ave/ McNeil	1971	Maricopa	\$20,475	\$40,950
Phoenix	Little Canyon Park, 31st Ave & Missouri	1971	Maricopa	\$99,000	\$198,000
Phoenix	El Reposo Park	1971	Maricopa	\$79,975	\$159,950
Phoenix	Los Olivos Park, 28th St/ Indian School	1971	Maricopa	\$239,500	\$479,000
Phoenix	La Pradera Park, 39th Ave. & Glendale	1971	Maricopa	\$192,135	\$384,270
Phoenix	Royal Palm Park, 15th Ave & Butler	1972	Maricopa	\$257,500	\$515,000
Phoenix	Circle K Park, 12th St/ S Mountain Ave	1972	Maricopa	\$76,450	\$152,900
Phoenix	Acoma Park, 39th Ave & Acoma	1972	Maricopa	\$38,344	\$76,687
Phoenix	El Oso Park, 75th Ave & Osborn	1972	Maricopa	\$28,100	\$56,200
Phoenix	Echo Canyon Park Acquisition	1972	Maricopa	\$207,500	\$415,000
Phoenix	Paradise Valley Park Community Ctr	1972	Maricopa	\$3,539	\$7,077
Phoenix	Unnamed Park Between 32nd & 40th St	1973	Maricopa	\$120,000	\$240,000
Phoenix	Sweetwater Park, 40th St./ Tatum	1973	Maricopa	\$47,250	\$94,500
Phoenix	Cactus Park Development	1973	Maricopa	\$34,575	\$69,150
Phoenix	Cactus Park Swimming Pool	1973	Maricopa	\$201,843	\$403,686
Phoenix	Nevitt Park, 44th Way & Vineyard	1973	Maricopa	\$36,250	\$72,500
Phoenix	Dev. of El Oso Park, 75th Ave & Osborn	1973	Maricopa	\$25,188	\$50,375
Phoenix	Acacia Park, 30th Ave & Hearn	1973	Maricopa	\$68,700	\$137,400

LWCF GRANT RECIPIENT	PROJECT TITLE	GRANT YEAR	COUNTY	LWCF AWARD	TOTAL PROJ COST
Phoenix	Unnamed Park in Phoenix Mt. Preserve	1973	Maricopa	\$137,500	\$275,000
Phoenix	Royal Palm Park, 15th Ave & Butler	1974	Maricopa	\$36,400	\$72,800
Phoenix	Ma-Ha-Tuak Initial Dev, 7th Ave/ McNeil	1974	Maricopa	\$42,000	\$84,000
Phoenix	Acoma Pk-Initial Dev. 39th Ave/ Acoma	1974	Maricopa	\$13,850	\$27,700
Phoenix	Sueno Pk-Initial Dev 43rd Ave/ Encanto	1974	Maricopa	\$49,400	\$98,800
Phoenix	El Reposo Park-Initial Dev.	1974	Maricopa	\$40,900	\$81,800
Phoenix	Meig Acquisition Phoenix Mtn. Preserve	1974	Maricopa	\$47,460	\$94,920
Phoenix	Durham Acq. Option 2/ Phx Mtn Prsve.	1974	Maricopa	\$220,613	\$441,226
Phoenix	Phoenix Metro Area Bikeway Dev.	1975	Maricopa	\$185,187	\$370,375
Phoenix	Palma Park, 12th St. & Dunlap	1975	Maricopa	\$19,580	\$39,160
Phoenix	Paradise Valley Park Gymkhana	1975	Maricopa	\$34,533	\$69,065
Phoenix	Meig Acq, 4th Option-Phx Mtn Prsve	1975	Maricopa	\$47,565	\$95,130
Phoenix	Los Olivos Park, 28th St/ Glenrosa	1975	Maricopa	\$87,188	\$174,376
Phoenix	Nuestro Park-Acq/Dev, 8th St/ Pima	1975	Maricopa	\$110,000	\$220,000
Phoenix	Construction of Tennis Crts-El Reposo	1975	Maricopa	\$70,000	\$140,000
Phoenix	Alvord/Caesar Chavez Lake Develop	1975	Maricopa	\$261,324	\$522,648
Phoenix	La Pradera Park	1976	Maricopa	\$101,225	\$202,450
Phoenix	Alvord Park/Caesar Chavez Dev Ph II	1976	Maricopa	\$137,500	\$275,000
Phoenix	Sandpiper/Crossed Arrows Pk-Acq/Dev.	1977	Maricopa	\$200,000	\$400,000
Phoenix	Durham Property Acq.-Phx Mtn Prsve	1977	Maricopa	\$195,939	\$391,878
Phoenix	Durham Property Acq. Phx Mtn Prsve	1978	Maricopa	\$274,798	\$549,596
Phoenix	Singer Property Acq/Dev-Conocido Pk	1978	Maricopa	\$148,051	\$296,102
Phoenix	Phoenix Mountain Preserve Acq.	1978	Maricopa	\$344,675	\$689,350
Phoenix	Westcor Pt.I-Sweetwater/Cholla Cove	1978	Maricopa	\$254,487	\$508,974
Phoenix	Edison Park Development	1979	Maricopa	\$26,203	\$52,406
Phoenix	G.R. Herberger Pk, 56th St/ Indian Schl	1979	Maricopa	\$23,357	\$46,714
Phoenix	Parcel 57 Acq. Phoenix Mtn. Preserves	1979	Maricopa	\$300,000	\$600,000
Phoenix	Paradise Valley Park Dev. Phase 6	1979	Maricopa	\$148,930	\$297,859
Phoenix	Sweetwater/Cholla Cove Pk-Acq/ Dev II	1979	Maricopa	\$88,713	\$177,425
Phoenix	Parcel 65 Acq. Phoenix Mtn. Preserve	1979	Maricopa	\$300,000	\$600,000
Phoenix	Hayden Park Addition	1980	Maricopa	\$157,791	\$315,582
Phoenix	Norton Park Acq, 12th St & Hatcher	1980	Maricopa	\$100,050	\$200,100
Phoenix	Nueve Park Continuing Development	1980	Maricopa	\$116,000	\$232,000
Phoenix	El Reposo Park Continuing Develop	1980	Maricopa	\$115,933	\$231,865
Phoenix	Central Park Development	1980	Maricopa	\$9,807	\$19,614
Phoenix	Hoelzen Land Acq-Nevitt & Hoshoni Pk	1980	Maricopa	\$236,749	\$473,498
Phoenix	Sandpiper/Crossed Arrows Pk-Acoma	1980	Maricopa	\$204,803	\$409,606
Phoenix	Sunburst Paradise Pk-47 Av/Paradise	1981	Maricopa	\$85,174	\$170,347
Phoenix	Parcel 49 Acq. Phoenix Mtn. Pres.	1981	Maricopa	\$106,538	\$213,076
Phoenix	Arcadia Park, 56th St & Osborn	1981	Maricopa	\$152,206	\$304,412
Phoenix	Hayden Park Development	1981	Maricopa	\$101,488	\$202,976
Phoenix	Alvord Pk & S. Mtn Parcel Acq	1981	Maricopa	\$210,000	\$420,000
Phoenix	Develop Sueno & Sumida Parks	1981	Maricopa	\$325,000	\$650,000
Phoenix	Encanto Park	1983	Maricopa	\$125,000	\$250,000
Phoenix	La Pradera Park Development	1983	Maricopa	\$106,000	\$212,000
Phoenix	Cactus Park	1984	Maricopa	\$18,000	\$36,000
Phoenix	Moon Valley Park	1984	Maricopa	\$147,565	\$295,130
Phoenix	Cave Creek/Rose Mofford Sprts Comp.	1985	Maricopa	\$140,000	\$280,000
Phoenix	Desert West Park - Ph I Development	1985	Maricopa	\$65,000	\$130,000

LWCF GRANT RECIPIENT	PROJECT TITLE	GRANT YEAR	COUNTY	LWCF AWARD	TOTAL PROJ COST
Phoenix	Christy Cove Park Development	1985	Maricopa	\$60,125	\$120,250
Phoenix	Nevitt Park Continuing Development	1985	Maricopa	\$59,078	\$118,155
Phoenix	Cholla Cove Park	1986	Maricopa	\$66,750	\$133,500
Phoenix	El Reposo Park Restroom	1986	Maricopa	\$25,852	\$51,703
Phoenix	Solano Park Lighted Ballfield	1987	Maricopa	\$32,995	\$65,990
Phoenix	Nueve Park Game Court/Play Area Dev	1988	Maricopa	\$32,404	\$64,807
Phoenix	Hermoso Park Picnic And Play Area	1988	Maricopa	\$31,942	\$63,884
Phoenix	Lookout Mountain Park Improvements	1989	Maricopa	\$45,637	\$91,274
Phoenix	Buffalo Ridge Park Improvements	1993	Maricopa	\$114,500	\$229,000
Phoenix	63rd Ave. & Garfield Dev.	1995	Maricopa	\$227,500	\$455,000
Phoenix	Long Homestead Park Development	2003	Maricopa	\$154,560	\$309,120
Queen Creek	Desert Mountain Park Ballfield Complex	2003	Maricopa	\$427,421	\$854,842
Queen Creek	Horseshoe Park/Equestrian Centre	2005	Maricopa	\$935,000	\$1,870,000
Scottsdale	Scottsdale Community Pool	1966	Maricopa	\$25,782	\$51,564
Scottsdale	Scottsdale Short Course Swim Pool	1967	Maricopa	\$81,752	\$163,503
Scottsdale	Chesnutt Neighborhood Park	1969	Maricopa	\$19,882	\$39,765
Scottsdale	Eldorado Park Urban Campground	1969	Maricopa	\$124,595	\$249,190
Scottsdale	Eldorado Lake	1970	Maricopa	\$73,875	\$147,750
Scottsdale	Improvement Projects In 4 Parks Chaparral Park-formerly Jackrabbit Park	1971	Maricopa	\$54,250	\$108,500
Scottsdale	Chaparral Park (formerly Jackrabbit Pk)	1971	Maricopa	\$102,253	\$204,507
Scottsdale	Chaparral Park (was Jackrabbit Park)	1972	Maricopa	\$314,054	\$628,108
Scottsdale	Chaparral Park (was Jackrabbit Park)	1972	Maricopa	\$339,597	\$679,193
Scottsdale	Scottsdale City Bikeways	1973	Maricopa	\$7,500	\$15,000
Scottsdale	McCormick-Stillman Railroad Park	1973	Maricopa	\$100,000	\$200,000
Scottsdale	Vista Del Camino Spray Pad	1974	Maricopa	\$10,000	\$20,000
Scottsdale	Scottsdale City Bikeways Phase II	1974	Maricopa	\$13,500	\$27,000
Scottsdale	Chaparral Park Phase III	1974	Maricopa	\$32,500	\$65,000
Scottsdale	Indian Bend Wash Flood Control	1974	Maricopa	\$494,195	\$988,390
Scottsdale	McCormick Ranch Parks	1974	Maricopa	\$229,600	\$459,200
Scottsdale	Chaparral Tennis Lighting	1974	Maricopa	\$15,000	\$30,000
Scottsdale	Scottsdale City Bikeways, Phase IV	1975	Maricopa	\$25,000	\$50,000
Scottsdale	Osborn Park	1975	Maricopa	\$90,000	\$180,000
Scottsdale	Gainey Ranch Park	1984	Maricopa	\$38,075	\$76,150
Scottsdale	Grayhawk Community Park: Phase I	2007	Maricopa	\$225,614	\$451,228
Tempe	Tempe Canal Park	1967	Maricopa	\$50,000	\$100,000
Tempe	Escalante Park	1968	Maricopa	\$11,321	\$22,642
Tempe	Tempe Canal Park No 2	1970	Maricopa	\$37,523	\$75,046
Tempe	Selleh Park Development Phase II	1971	Maricopa	\$7,825	\$15,650
Tempe	Hudson Park Development	1971	Maricopa	\$7,811	\$15,000
Tempe	Papago Park Development Phase I	1971	Maricopa	\$18,219	\$36,437
Tempe	Tempe Canal Park Phase III	1971	Maricopa	\$10,141	\$20,281
Tempe	Knoell Site Acquisition (Cole Park)	1971	Maricopa	\$13,083	\$26,166
Tempe	Suggs Nghbrhd Park Acq. (Scudder)	1971	Maricopa	\$17,836	\$35,671
Tempe	Kiwanis Community Park Acquisition	1971	Maricopa	\$382,307	\$764,614
Tempe	Selleh Park Development	1971	Maricopa	\$13,000	\$26,000
Tempe	Cyprus Park Development	1971	Maricopa	\$6,861	\$13,722
Tempe	Rotary Park Development	1971	Maricopa	\$5,000	\$10,000
Tempe	Multi-Purpose Field Lighting	1971	Maricopa	\$49,771	\$99,542
Tempe	Meyer Park Development	1971	Maricopa	\$6,986	\$13,972

LWCF GRANT RECIPIENT	PROJECT TITLE	GRANT YEAR	COUNTY	LWCF AWARD	TOTAL PROJ COST
Tempe	Joyce Park Development	1971	Maricopa	\$8,250	\$16,500
Tempe	Kiwanis Pk Dev.	1973	Maricopa	\$137,500	\$275,000
Tempe	Prelim Dev. of Five Neighborhood Pks	1973	Maricopa	\$46,875	\$93,750
Tempe	Escalante Park Swimming Pool	1974	Maricopa	\$158,694	\$317,389
Tempe	Clark Park Swimming Pool	1974	Maricopa	\$150,000	\$300,000
Tempe	Papago Park, Phase II Development	1974	Maricopa	\$49,238	\$98,475
Tempe	Tennis Court Improvement	1975	Maricopa	\$20,257	\$40,515
Tempe	Casa Madre Park (Ehrhardt Park)	1975	Maricopa	\$64,264	\$128,528
Tempe	Moeur Park Development	1976	Maricopa	\$65,613	\$131,226
Tempe	Neighborhood Park - Carver Road & La	1977	Maricopa	\$55,000	\$110,000
Tempe	Dev. of Two Neighborhood Parks	1978	Maricopa	\$55,000	\$110,000
Tempe	Handball Court Lighting	1979	Maricopa	\$18,203	\$36,407
Tempe	Kiwanis Pk. Group Picnic/Garden Areas	1980	Maricopa	\$328,500	\$657,000
Tempe	General Park Development	1980	Maricopa	\$70,278	\$140,556
Tempe	Multipurpose Athletic Field Dev.	1980	Maricopa	\$225,000	\$450,000
Tempe	Recreation Facilities Relighting	1981	Maricopa	\$17,081	\$34,161
Tempe	Neighborhood Park Improv. Phase II	1985	Maricopa	\$81,630	\$163,261
Tempe	Neighborhood Park Improv. Phase III	1985	Maricopa	\$38,460	\$76,920
Tempe	Escalante Park Ballfield Improvements	1986	Maricopa	\$11,602	\$23,204
Tempe	Kiwanis Park Ramada	1989	Maricopa	\$75,000	\$150,000
Tempe	McClintock Swimming Pool Renovation	1994	Maricopa	\$370,000	\$1,162,200
Tempe	Tempe Sports Complex: Phase II	2002	Maricopa	\$500,000	\$1,855,000
Tolleson	Tolleson Jr HS Ballfield Lighting	1977	Maricopa	\$23,214	\$46,428
Tolleson	Tolleson Park Dev. Project A	1979	Maricopa	\$19,372	\$38,744
Tolleson	Development of Two Park Sites	1983	Maricopa	\$42,500	\$85,000
Tolleson	Ballfield Lighting	1986	Maricopa	\$61,150	\$122,300
Tolleson	Tolleson Raquetball/Handball	1989	Maricopa	\$26,337	\$52,674
Wickenburg	Overhaul to Existing Swimming Pool	1973	Maricopa	\$18,823	\$37,646
Wickenburg	Constellation Park Development	1979	Maricopa	\$3,915	\$7,831
Wickenburg	Wellik Park Development-Phase I	1991	Maricopa	\$75,000	\$150,000
Wickenburg	Maguire Park Development	2005	Maricopa	\$42,000	\$84,000
Mohave County					
Arizona State Parks	Lake Havasu State Park	1967	Mohave	\$10,000	\$20,000
Arizona State Parks	Cattail Cove Development	1969	Mohave	\$18,868	\$37,736
Arizona State Parks	Lake Havasu State Park	1971	Mohave	\$51,636	\$103,271
Arizona State Parks	Campsites & Toilets	1972	Mohave	\$10,750	\$21,500
Arizona State Parks	Day Use Area & Restrooms	1972	Mohave	\$15,053	\$30,106
Bullhead City	Nicklause Park Development	1968	Mohave	\$31,432	\$62,864
Bullhead City	Rotary Park Soccer Field Lighting	2006	Mohave	\$258,545	\$517,090
Kingman	Kingman Swimming Pool & Bathhouse	1972	Mohave	\$54,051	\$108,103
Kingman	Kingman Municipal Golf Course	1973	Mohave	\$266,580	\$533,161
Kingman	Fire Fighter Memorial Park	1975	Mohave	\$79,916	\$159,832
Mohave County	Neal-Butler Ballpark Lights & Water	1979	Mohave	\$9,850	\$19,700
Mohave County	Davis Camp Improvements	1983	Mohave	\$109,495	\$218,990
Navajo County					
Arizona State Parks	Homolovi Ruins State Park	1993	Navajo	\$62,500	\$125,000
Holbrook	Holbrook Swimming Pool	1977	Navajo	\$285,438	\$570,876
Holbrook	Holbrook Tennis Courts	1978	Navajo	\$48,815	\$97,630
Holbrook	Ball Park Lighting & Playground Dev.	1979	Navajo	\$49,500	\$99,000

LWCF GRANT RECIPIENT	PROJECT TITLE	GRANT YEAR	COUNTY	LWCF AWARD	TOTAL PROJ COST
Holbrook	Development of City School Courts	1980	Navajo	\$110,000	\$220,000
Holbrook	Lisitzky Park Playground Equipment	2005	Navajo	\$14,845	\$29,690
Navajo County	Navajo County Recreation Center	1980	Navajo	\$181,858	\$363,715
Navajo County	Little Painted Desert Park Picnic Fac	1981	Navajo	\$10,000	\$20,000
Navajo County	Heber/Overgaard Park Development	1983	Navajo	\$25,000	\$50,000
Pinetop-Lakeside	Woodland Lake Park	1984	Navajo	\$39,000	\$78,000
Pinetop-Lakeside	Woodland Lake Trail and Access	1990	Navajo	\$35,085	\$70,170
Pinetop-Lakeside	Pinetop Recreation Complex Lighting	2006	Navajo	\$155,000	\$310,000
Show Low	Show Low City Park Dev.	1973	Navajo	\$32,954	\$65,907
Show Low	Show Low City Park Dev. - Phase II	1974	Navajo	\$29,961	\$59,922
Show Low	Show Low City Park, III	1978	Navajo	\$67,026	\$134,052
Show Low	David C. Porter Park Baseball Field	1983	Navajo	\$44,842	\$89,684
Show Low	Show Low H S Ballfield Relighting	1988	Navajo	\$25,745	\$51,490
Snowflake	Snowflake Golf Course	1977	Navajo	\$188,360	\$376,720
Snowflake	Centennial Park Development	1978	Navajo	\$109,305	\$218,610
Taylor	Town Park Development	1976	Navajo	\$38,552	\$77,104
Taylor	Taylor Town Park Acquisition	1990	Navajo	\$22,500	\$45,000
Taylor	Taylor Park Project	1993	Navajo	\$19,521	\$39,596
Taylor	Freeman Park Improvements	2003	Navajo	\$90,128	\$180,256
Winslow	Winslow Bathhouse	1966	Navajo	\$15,743	\$31,485
Winslow	City of Winslow Hospitality Park	1979	Navajo	\$299,915	\$599,830
Winslow	Winslow Trail, Ballfield & Courts	1980	Navajo	\$75,000	\$150,000
Winslow	Little League Park Sprinkler System	1981	Navajo	\$4,750	\$9,500
Winslow	Centennial Plaza Park	1981	Navajo	\$12,598	\$25,195
Winslow	Coopertown Mini-Park	1982	Navajo	\$30,199	\$60,397
Winslow	Multi-use Field Improvements	1986	Navajo	\$20,955	\$41,910
Pima County					
Arizona State Parks	Catalina State Park Land Acquisition	1979	Pima	\$300,000	\$600,000
Arizona State Parks	Catalina State Park: Phase II	2002	Pima	\$191,170	\$382,340
Arizona State Parks	Catalina State Park: Phase I	2003	Pima	\$528,181	\$1,056,362
Oro Valley	Dennis Weaver Park	1973	Pima	\$132,425	\$264,850
Oro Valley	Dennis Weaver Park	1977	Pima	\$66,000	\$132,000
Oro Valley	Light MU Fields Dennis Weaver	1980	Pima	\$50,000	\$100,000
Pima County	Ajo County Park	1966	Pima	\$6,052	\$12,104
Pima County	Marana Park	1967	Pima	\$22,824	\$45,647
Pima County	Marana Park Tennis Courts	1969	Pima	\$8,256	\$16,512
Pima County	Marana Park Swimming Pool	1970	Pima	\$44,657	\$89,314
Pima County	Manzanita Park Development	1970	Pima	\$48,360	\$96,719
Pima County	Western Hills Park	1970	Pima	\$31,415	\$62,830
Pima County	Los Ninos Park	1970	Pima	\$5,182	\$10,364
Pima County	Fort Lowell Archery Range Land Acq.	1972	Pima	\$5,000	\$10,000
Pima County	Marana Community Park	1972	Pima	\$10,998	\$21,995
Pima County	Los Ninos Neighborhood Park	1972	Pima	\$90,214	\$180,428
Pima County	Ajo Neighborhood Park	1975	Pima	\$100,942	\$201,884
Pima County	Emily Gray School Playground	1975	Pima	\$30,000	\$60,000
Pima County	Spanish Trail Bicycle & Hiking Trail	1975	Pima	\$150,000	\$300,000
Pima County	Casas Adobes Neighborhood Park	1976	Pima	\$18,488	\$36,976
Pima County	Flowing Wells Rec. Coop.	1976	Pima	\$50,651	\$101,301
Pima County	Marana HS Community Rec. Coop.	1976	Pima	\$14,093	\$28,186

LWCF GRANT RECIPIENT	PROJECT TITLE	GRANT YEAR	COUNTY	LWCF AWARD	TOTAL PROJ COST
Pima County	Cross Jr. High School Community Coop	1976	Pima	\$10,969	\$21,938
Pima County	Rillito Town Park	1977	Pima	\$12,738	\$25,477
Pima County	Ajo Regional Park, Phase VII	1977	Pima	\$30,675	\$61,351
Pima County	Ajo Neighborhood Park II	1977	Pima	\$29,004	\$58,007
Pima County	Anamax Neighborhood Park	1977	Pima	\$74,810	\$149,619
Pima County	Los Ninos-Augie Acona Park	1977	Pima	\$17,500	\$35,000
Pima County	Reynolds/Manzanita Park	1978	Pima	\$42,192	\$84,384
Pima County	Tucson Mountain Park Expansion	1979	Pima	\$132,391	\$264,782
Pima County	McDonald District Park	1980	Pima	\$40,714	\$81,428
Pima County	Arthur Pack Softball Complex	1980	Pima	\$71,677	\$143,354
Pima County	E.S. "Bud" Walker Neighborhood Park	1980	Pima	\$55,000	\$110,000
Pima County	Denny Dunn Neighborhood Park	1981	Pima	\$55,394	\$110,787
Pima County	Wildwood Neighborhood Park	1981	Pima	\$48,080	\$96,159
Pima County	Arthur Pack Ballfield Lighting Phase	1983	Pima	\$75,000	\$150,000
Pima County	McDonald Park Ballfield Lighting	1983	Pima	\$75,000	\$150,000
South Tucson	South Tucson Park Acquisition	1972	Pima	\$14,850	\$29,700
Tucson	Tucson Night Lighting	1966	Pima	\$30,634	\$61,268
Tucson	Pueblo Garden Bathhouse Addition	1966	Pima	\$9,467	\$18,934
Tucson	Mansfield Swim. Pool & Bathhouse	1966	Pima	\$36,921	\$73,842
Tucson	Mission-Del Norte Park	1967	Pima	\$25,987	\$51,974
Tucson	Palo Verde Swimming Pool	1967	Pima	\$29,128	\$58,256
Tucson	Palo Verde Park	1967	Pima	\$14,750	\$29,500
Tucson	Pantano Swimming Pool	1967	Pima	\$38,709	\$77,419
Tucson	Fort Lowell Park	1967	Pima	\$65,568	\$131,137
Tucson	Pantano Park Improvements	1970	Pima	\$12,699	\$25,398
Tucson	Mansfield Park Improvements	1970	Pima	\$3,782	\$7,564
Tucson	Mission Park Improvements	1970	Pima	\$11,416	\$22,832
Tucson	Rodeo Park Improvements	1970	Pima	\$11,848	\$23,697
Tucson	Palo Verde Park Improvements	1970	Pima	\$946	\$1,891
Tucson	Kennedy Park Improvements	1970	Pima	\$4,495	\$8,990
Tucson	Mirasol Park Improvements	1970	Pima	\$12,763	\$25,526
Tucson	Vista Del Pueblo Park Improvement	1970	Pima	\$923	\$1,846
Tucson	Del Norte Park Improvements	1970	Pima	\$15,287	\$30,573
Tucson	Mission Park Baseball Field Lighting	1971	Pima	\$69,960	\$139,920
Tucson	Kennedy Lake	1971	Pima	\$57,094	\$114,188
Tucson	Ft. Lowell Park Tennis Courts	1971	Pima	\$33,401	\$66,802
Tucson	Oury Park Acquisition	1971	Pima	\$16,500	\$33,000
Tucson	Northwest District Park Dev.	1971	Pima	\$70,530	\$141,059
Tucson	Northwest Dist. Park Acquisition	1971	Pima	\$82,032	\$164,064
Tucson	Southwest Neighborhood Park Dev.	1971	Pima	\$8,539	\$17,079
Tucson	Tennis Court Lighting Randolph Park	1972	Pima	\$14,777	\$29,553
Tucson	Diving Bays At Three Municipal Pools	1972	Pima	\$79,068	\$158,135
Tucson	Oury Park Development	1972	Pima	\$27,215	\$54,430
Tucson	Santa Rita Softball Field & Lighting	1972	Pima	\$25,371	\$50,742
Tucson	Pantano Baseball Field	1972	Pima	\$50,000	\$100,000
Tucson	Rodeo Irrigation Turf & Trees	1972	Pima	\$5,000	\$10,000
Tucson	Prudence Land Acquisition	1972	Pima	\$28,800	\$57,600
Tucson	Randolph Tennis & Handball Courts	1972	Pima	\$83,525	\$167,050
Tucson	Mini Park 3 Development	1972	Pima	\$3,606	\$7,212

LWCF GRANT RECIPIENT	PROJECT TITLE	GRANT YEAR	COUNTY	LWCF AWARD	TOTAL PROJ COST
Tucson	Del Norte Irrigation	1972	Pima	\$7,500	\$15,000
Tucson	El Rio Swimming Pool & Misc. Dev.	1972	Pima	\$103,653	\$207,306
Tucson	Mini Park #4 Development	1972	Pima	\$3,567	\$7,134
Tucson	Northeast District Park	1972	Pima	\$57,300	\$114,600
Tucson	Model Cities Neighborhood Park Dev.	1972	Pima	\$14,167	\$28,334
Tucson	Mini Park #5 Development	1972	Pima	\$7,150	\$14,300
Tucson	Lakeside Park Site Acquisition	1973	Pima	\$40,500	\$81,000
Tucson	Hearthstone Park Site Acquisition	1973	Pima	\$22,500	\$45,000
Tucson	Kennedy Park Swimming Pool	1973	Pima	\$75,773	\$151,547
Tucson	Escalante Park Swimming Pool	1973	Pima	\$102,073	\$204,146
Tucson	Randolph Center Pool Bathhouse	1974	Pima	\$67,901	\$135,802
Tucson	Casas Del Sol Pk Site Acq.	1974	Pima	\$11,250	\$22,500
Tucson	Mansfield Park Land Acq.	1974	Pima	\$41,950	\$83,900
Tucson	Rodeo Pk Softball Field Lighting	1974	Pima	\$12,231	\$24,462
Tucson	NW Dst. Park Lighted Softball Field	1974	Pima	\$18,437	\$36,874
Tucson	Ft. Lowell Ballfield Lighting	1974	Pima	\$60,000	\$120,000
Tucson	Lakeside Park - Phase II Development	1974	Pima	\$53,830	\$107,659
Tucson	Bravo Park Acquisition & Development	1974	Pima	\$49,725	\$99,450
Tucson	Freedom Pk Devel/ Case Pk Addition	1975	Pima	\$85,000	\$170,000
Tucson	Doolen JHS Softball Fld/ M-U Ct Lights	1975	Pima	\$13,004	\$26,008
Tucson	Utterback J.H.S. Multi-Use Ct. Lighting	1975	Pima	\$4,000	\$8,000
Tucson	Flowing Wells H.S. Tennis Ct. Lighting	1975	Pima	\$8,174	\$16,348
Tucson	Amphitheater H.S. B-ball/Tennis Lights	1975	Pima	\$56,500	\$113,000
Tucson	Catalina High School Swim Pool	1975	Pima	\$201,150	\$402,300
Tucson	Tucson H.S. Tennis Court Lighting	1975	Pima	\$12,175	\$24,350
Tucson	Santa Cruz Greenbelt	1975	Pima	\$76,252	\$152,504
Tucson	Oury Park Swimming Pool	1976	Pima	\$120,057	\$240,113
Tucson	Rincon High School Multiple-Use Court	1976	Pima	\$2,000	\$4,000
Tucson	Vail J.H.S. Multiple-Use Ct. Lighting	1976	Pima	\$2,000	\$4,000
Tucson	Gridley J.H.S. Multiple-Use Ct. Lighting	1976	Pima	\$3,000	\$6,000
Tucson	Sunnyside Park Development	1976	Pima	\$265,000	\$530,000
Tucson	Amphitheater H.S. Pool	1976	Pima	\$202,500	\$405,000
Tucson	Freedom Park Pool/ Case Park Addition	1976	Pima	\$145,142	\$290,283
Tucson	Hearthstone Park Development	1976	Pima	\$46,533	\$93,066
Tucson	Silverbell Golf Course	1977	Pima	\$301,600	\$603,200
Tucson	Santa Rita H.S. Baseball Field Lighting	1977	Pima	\$34,995	\$69,989
Tucson	Flowing Wells Lighting	1977	Pima	\$40,087	\$80,174
Tucson	Utterback J.H.S. Playfield Lighting	1977	Pima	\$10,390	\$20,779
Tucson	Fickett J.H.S. M-U Court Lighting	1977	Pima	\$3,510	\$7,020
Tucson	Catalina High School Court Lighting	1977	Pima	\$6,000	\$12,000
Tucson	Sahuaro HS M-U Courts Lighting	1977	Pima	\$3,490	\$6,980
Tucson	Palo Verde HS Multiple Use Lighting	1977	Pima	\$4,984	\$9,968
Tucson	Magee Jr HS Multi Use Courts Lighting	1977	Pima	\$3,489	\$6,977
Tucson	Santa Rita High School Lighting	1977	Pima	\$7,927	\$15,854
Tucson	Magee Jr. H.S. Playfield Lighting	1977	Pima	\$15,000	\$30,000
Tucson	Canyon Del Oro High School Coop	1977	Pima	\$23,178	\$46,356
Tucson	Santa Cruz Riverpark Dev., II	1978	Pima	\$130,000	\$260,000
Tucson	Santa Cruz Riverpark Acquisition	1978	Pima	\$296,184	\$592,368
Tucson	Four Lighted Tennis Courts	1978	Pima	\$59,529	\$119,057

LWCF GRANT RECIPIENT	PROJECT TITLE	GRANT YEAR	COUNTY	LWCF AWARD	TOTAL PROJ COST
Tucson	Tennis Lighting - James Thomas Park	1978	Pima	\$6,712	\$13,424
Tucson	Desert Shadows Neighborhood Park	1979	Pima	\$47,798	\$95,595
Tucson	Himmel Park Tennis Court Lights	1979	Pima	\$29,958	\$59,915
Tucson	Lakeside Park Phase III Development	1979	Pima	\$29,483	\$58,966
Tucson	Lincoln Regional Park Phased Dev	1979	Pima	\$300,000	\$600,000
Tucson	Menlo Park Landscaping & Lighting	1979	Pima	\$33,123	\$66,246
Tucson	Ormsby Park Lights	1979	Pima	\$25,592	\$51,184
Tucson	Park Renovation/Catalina Armory Parks	1979	Pima	\$52,070	\$104,140
Tucson	Randolph Park Baseball Field Lights	1979	Pima	\$151,825	\$303,650
Tucson	Randolph Park Tennis & Handball Crts	1979	Pima	\$281,010	\$562,019
Tucson	Silverbell Regional Park Phased Dev	1979	Pima	\$50,752	\$101,504
Tucson	J.F. Kennedy Regional Park	1980	Pima	\$151,659	\$303,318
Tucson	Amphitheater Jr HS Playfield Lights	1980	Pima	\$17,811	\$35,623
Tucson	Reid Park & Zoo Improvements	1980	Pima	\$215,000	\$430,000
Tucson	Amphitheater HS Basketball Lighting	1981	Pima	\$10,000	\$20,000
Tucson	Northeast Regional Park Phase I	1981	Pima	\$75,000	\$150,000
Tucson	Reid Regional Park Renovation	1981	Pima	\$62,673	\$125,347
Tucson	Eastside Golf Course	1981	Pima	\$564,191	\$1,128,382
Tucson	Udall Park Phase II	1983	Pima	\$72,000	\$144,000
Tucson	Northwest Park Baseball Lighting	1983	Pima	\$37,500	\$75,000
Tucson	Santa Rita Park Comfort Station	1984	Pima	\$20,000	\$40,000
Tucson	Kennedy Regional Park Development	1985	Pima	\$197,200	\$394,400
Tucson	Greasewood Park Dev	1986	Pima	\$75,000	\$150,000
Tucson	Lakeside Park Dev	1986	Pima	\$75,000	\$150,000
Tucson	Mansfield Park Development	1986	Pima	\$71,000	\$142,000
Tucson	Udall Park Picnic And Baseball Facility	1988	Pima	\$75,000	\$150,000
Tucson	Rio Vista Park: Phase I	2002	Pima	\$191,802	\$383,604
Tucson	Case Park Development: Phase II Silverlake Park Soccer Field Parking Lot	2002	Pima	\$126,934	\$253,868
Tucson		2008	Pima	\$151,405	\$322,810
Tucson	Juhan Park Improvements	2008	Pima	\$147,663	\$295,326
Pinal County					
Apache Junction	Ball Park & Tennis Courts	1980	Pinal	\$95,953	\$191,905
Apache Junction	Prospector Park Development Phase I	1985	Pinal	\$102,500	\$205,000
Apache Junction	Prospector Park Open Space	1987	Pinal	\$75,000	\$150,000
Apache Junction	City Hall Park Improvements	1987	Pinal	\$50,000	\$100,000
Arizona State Parks	Picacho Peak State Park	1966	Pinal	\$50,312	\$100,623
Arizona State Parks	Picacho Peak State Park	1971	Pinal	\$30,821	\$61,642
Arizona State Parks	Picacho Peak RR, Shower, & Water	1992	Pinal	\$76,076	\$152,152
Arizona State Parks	Picacho Peak State Park	1993	Pinal	\$55,000	\$110,000
Arizona State Parks	Lost Dutchman State Park Develop	1995	Pinal	\$125,656	\$343,750
Arizona State Parks	Picacho Peak State Park RR/Shower	2000	Pinal	\$208,945	\$417,890
Arizona State Parks	Picacho Peak State Park RR/Shower	2001	Pinal	\$491,235	\$982,470
Arizona State Parks	Lost Dutchman State Park Imp.	2004	Pinal	\$553,629	\$1,107,259
Arizona State Parks	Lost Dutchman State Park Imp.	2006	Pinal	\$160,546	\$321,091
Casa Grande	Municipal Golf Course	1976	Pinal	\$283,000	\$566,000
Casa Grande	Santa Cruz Park - Phase II	1979	Pinal	\$15,650	\$31,300
Casa Grande	Mosley Park Development	1980	Pinal	\$23,500	\$47,000
Casa Grande	Westside Park Development	1980	Pinal	\$16,475	\$32,950
Casa Grande	Eastland Park Development	1980	Pinal	\$15,000	\$30,000

LWCF GRANT RECIPIENT	PROJECT TITLE	GRANT YEAR	COUNTY	LWCF AWARD	TOTAL PROJ COST
Casa Grande	Gilbert Park Improvements	1985	Pinal	\$13,801	\$27,602
Casa Grande	Ed Hooper Rodeo Pk Multisports Comp.	2000	Pinal	\$315,625	\$1,500,000
Coolidge	West School Park	1974	Pinal	\$38,226	\$76,451
Coolidge	Coolidge Regional Park Phase I	1980	Pinal	\$50,000	\$100,000
Coolidge	Coolidge Regional Park Phase II	1980	Pinal	\$47,000	\$94,000
Coolidge	Coolidge Regional Park Phase III	1983	Pinal	\$20,049	\$40,098
Coolidge	Coolidge Regional Park Phase IV	1985	Pinal	\$29,113	\$58,226
Coolidge	East Park Improvement	1989	Pinal	\$8,360	\$16,719
Eloy	Trekell Park Development	1977	Pinal	\$20,155	\$40,310
Eloy	Jones Park Facilities Project	1979	Pinal	\$18,788	\$37,575
Eloy	Eloy Facilities Improvement	1995	Pinal	\$63,000	\$126,000
Eloy	Jones Park Swimming Pool Renovation	2002	Pinal	\$253,802	\$507,604
Florence	Heritage Park Renovation	1987	Pinal	\$29,000	\$58,000
Florence	Heritage Park	1990	Pinal	\$30,000	\$60,000
Florence	Neighborhood Park	1995	Pinal	\$63,810	\$127,620
Kearny	Hubbard Park	1973	Pinal	\$43,884	\$87,768
Kearny	Kearny Swimming Pool & Bathhouse	1978	Pinal	\$140,295	\$280,590
Kearny	Lighting For Ballfield	1979	Pinal	\$17,742	\$35,484
Kearny	Hubbard Park Improvements	1979	Pinal	\$42,000	\$84,000
Kearny	Kearny Parks Renovation	1995	Pinal	\$65,435	\$147,500
Mammoth	Mammoth Municipal Swimming Pool	1975	Pinal	\$60,000	\$120,000
Mammoth	Mammoth Multi-Use Park Dev.	1985	Pinal	\$23,853	\$47,706
Superior	Lighting At Kennedy & Roosevelt Schs	1979	Pinal	\$44,540	\$89,079
Superior	Ballfield Lighting Project Phase II	1980	Pinal	\$22,340	\$44,680
Superior	Superior Comm Park Acq & Devel	1988	Pinal	\$65,069	\$130,138
Santa Cruz County					
Arizona State Parks	Patagonia Lake Park Improvements	1982	Santa Cruz	\$299,588	\$599,175
Arizona State Parks	Patagonia Lake State Park Campgrnd	1985	Santa Cruz	\$86,800	\$173,600
Nogales	Nogales Tennis Courts	1967	Santa Cruz	\$4,225	\$8,450
Nogales	Madison Street Park	1968	Santa Cruz	\$2,160	\$4,320
Nogales	Anza Drive Dev.	1973	Santa Cruz	\$24,883	\$49,766
Nogales	Multi-Use Softball Field	1974	Santa Cruz	\$18,500	\$37,000
Nogales	Jr. Olympic Swimming Pool	1974	Santa Cruz	\$62,500	\$125,000
Nogales	Reg. Park And Golf Course	1978	Santa Cruz	\$175,000	\$350,000
Patagonia	Community Swimming Pool	1987	Santa Cruz	\$75,000	\$150,000
Yavapai County					
Arizona State Parks	Dead Horse Ranch State Park	1973	Yavapai	\$72,675	\$145,350
Arizona State Parks	Dead Horse Ranch State Park Phase II	1975	Yavapai	\$260,096	\$520,191
Arizona State Parks	Dead Horse Ranch Dev.	1976	Yavapai	\$70,000	\$140,000
Arizona State Parks	Dead Horse Ranch State Park Develop	2002	Yavapai	\$600,000	\$1,200,000
Camp Verde	Camp Verde Recreation Center	1979	Yavapai	\$47,314	\$94,628
Chino Valley	Chino Valley Center Dev.	1977	Yavapai	\$5,000	\$10,000
Chino Valley	Chino Valley Youth & Community Park	1981	Yavapai	\$30,800	\$61,600
Chino Valley	Chino Valley Multi-Use Court Dev.	1986	Yavapai	\$11,023	\$22,046
Clarkdale	Selna Ballfield Park	1977	Yavapai	\$32,311	\$64,621
Clarkdale	Clarkdale Swimming Pool Imp	1985	Yavapai	\$8,550	\$17,100
Clarkdale	Clarkdale Municipal Pool Renovation	1991	Yavapai	\$72,500	\$145,000
Cottonwood	Cottonwood Park & Playground	1978	Yavapai	\$18,484	\$36,968
Cottonwood	Cottonwood Swimming Pool	1980	Yavapai	\$182,000	\$364,000

LWCF GRANT RECIPIENT	PROJECT TITLE	GRANT YEAR	COUNTY	LWCF AWARD	TOTAL PROJ COST
Cottonwood	Cottonwood Riverfront Park	1985	Yavapai	\$49,875	\$99,750
Prescott	Prescott City Park	1966	Yavapai	\$14,466	\$28,932
Prescott	Prescott City Park	1966	Yavapai	\$4,000	\$8,000
Prescott	Roughrider Park	1973	Yavapai	\$46,814	\$93,629
Prescott	Granite Creek Park	1974	Yavapai	\$14,560	\$29,120
Prescott	Willow Lake Park	1974	Yavapai	\$18,700	\$37,400
Prescott	Willow Lake Park, II	1976	Yavapai	\$34,169	\$68,338
Prescott	Granite Creek Park, III	1977	Yavapai	\$11,981	\$23,963
Prescott	Granite Creek Park	1978	Yavapai	\$30,800	\$61,600
Prescott	Heritage Park Phase III Development	1979	Yavapai	\$19,645	\$39,290
Prescott	Granite Mtn. Tennis Courts	1981	Yavapai	\$29,390	\$58,780
Prescott	Heritage Park	1984	Yavapai	\$8,484	\$16,968
Prescott	Multi-use Field Complex	1991	Yavapai	\$66,189	\$132,378
Prescott	Pioneer Multiple Use Park	1992	Yavapai	\$100,000	\$200,000
Prescott	Willow & Watson Lake Improvements	2001	Yavapai	\$560,000	\$3,922,195
Prescott Valley	Site Development-Prescott Valley	1978	Yavapai	\$9,848	\$19,697
Prescott Valley	Prescott Valley Dev. Phase II	1980	Yavapai	\$17,992	\$35,984
Prescott Valley	Community Park Development	1983	Yavapai	\$16,313	\$32,626
Prescott Valley	Neighborhood Park Development	1986	Yavapai	\$11,058	\$22,116
Prescott Valley	Viewpoint Park	2002	Yavapai	\$252,000	\$740,040
Sedona	Sedona Rec. Park	1974	Yavapai	\$54,000	\$108,000
Sedona	Sedona Posse Grounds	1981	Yavapai	\$67,600	\$135,200
Sedona	Posse Grounds Park Improvements	1993	Yavapai	\$46,800	\$93,600
Yavapai County	Tenderfoot Hill Park	1977	Yavapai	\$24,607	\$49,214
Yavapai County	Lynx Creek Natural History Park	2001	Yavapai	\$164,908	\$329,816
Yuma County					
San Luis	Friendship Park	1971	Yuma	\$18,596	\$37,191
San Luis	San Luis Friendship Park Phase II	1972	Yuma	\$13,939	\$27,878
San Luis	San Luis Town Park Development	1988	Yuma	\$61,050	\$122,100
San Luis	Eligio Ramirez Park Development	2003	Yuma	\$97,500	\$195,000
Somerton	Council Avenue Park: Phase I	2002	Yuma	\$130,000	\$260,000
Wellton	Butterfield Park	1967	Yuma	\$3,132	\$6,264
Wellton	Butterfield Park 2	1970	Yuma	\$2,500	\$5,000
Wellton	Butterfield Park Phase III	1972	Yuma	\$5,000	\$10,000
Wellton	Wellton Cooperative Recreation Project	1977	Yuma	\$19,343	\$38,686
Wellton	Mini Park/Recreation Complex	1983	Yuma	\$12,827	\$25,654
Yuma	John F. Kennedy Ball Field	1967	Yuma	\$75,915	\$151,830
Yuma	Development of Smucker Park	1967	Yuma	\$6,423	\$12,847
Yuma	Sanguinetti Athletic Field	1968	Yuma	\$18,400	\$36,800
Yuma	Convention Center Recreation Complex	1978	Yuma	\$58,400	\$116,800
Yuma	Kennedy Park Expansion	1979	Yuma	\$146,852	\$293,704
Yuma	Reg. Complex Expansion Tennis Courts	1979	Yuma	\$32,607	\$65,214
Yuma	Recreation Complex Expansion	1980	Yuma	\$30,000	\$60,000
Yuma	Joe Henry Park Improvements	1983	Yuma	\$70,400	\$140,800
Yuma	Carver Park Improvements	1985	Yuma	\$53,000	\$106,000
Yuma	Sanguinetti Park Improvements	1986	Yuma	\$7,500	\$15,000
Yuma	Riverfront Gateway Park	2001	Yuma	\$184,000	\$368,000
Yuma County	N. R. Adair Memorial Park	1968	Yuma	\$11,960	\$23,920
Yuma County	N. R. Adair Memorial Park Dev	1970	Yuma	\$12,417	\$24,834

LWCF GRANT RECIPIENT	PROJECT TITLE	GRANT YEAR	COUNTY	LWCF AWARD	TOTAL PROJ COST
Yuma County	Gadsden Park Dev.	1970	Yuma	\$2,000	\$4,000
Yuma County	N. R. Adair Memorial Park	1970	Yuma	\$17,480	\$34,960
Yuma County	N. R. Adair Mexican Silhouette	1971	Yuma	\$5,000	\$10,000
Yuma County	Gadsden Park	1977	Yuma	\$12,362	\$24,725

LRSP GRANT RECIPIENT	PROJECT TITLE	GRANT YEAR	COUNTY	LRSP AWARD	TOTAL PROJ COST
Apache County					
Eagar	Eagar Pool Protective Enclosure	1992	Apache	\$45,250	\$90,500
Eagar	Round Valley Recreation Center	2000	Apache	\$75,000	\$150,000
Eagar	Ramsey Park Renovation/Development	2006	Apache	\$359,408	\$857,075
St. Johns	City Park Playground Equipment	2003	Apache	\$20,000	\$40,000
Cochise County					
Arizona State Parks	Kartchner Caverns State Park	1993	Cochise	\$71,000	\$142,000
Benson	Lions Park: Phase II	1992	Cochise	\$22,250	\$44,500
Benson	Benson Skate Park	2003	Cochise	\$25,000	\$50,000
Bisbee	Bisbee Park Acquisition/Development	1995	Cochise	\$161,650	\$323,300
Douglas	Causey Park Lighting	1992	Cochise	\$19,800	\$39,600
Douglas	Veterans Park Lighting	1992	Cochise	\$17,350	\$34,700
Douglas	Paseo de las Americas	1999	Cochise	\$235,452	\$823,412
Douglas	Airport Park Development	2003	Cochise	\$132,352	\$484,193
Sierra Vista	Civic Complex Park Development	1993	Cochise	\$70,500	\$141,000
Sierra Vista	Gateway Park Acquisition/Development	1998	Cochise	\$216,896	\$444,859
Tombstone	Medigovich Ballfield Improvement	1998	Cochise	\$31,062	\$62,125
Willcox	Quail Drive Sports Park & Pavilion	1994	Cochise	\$166,500	\$333,000
Coconino County					
Coconino County	Raymond Park Multi-Purpose Field	1993	Coconino	\$7,500	\$15,000
Coconino County	Doney Park Acquisition/Development	1997	Coconino	\$129,675	\$259,350
Coconino County	Fort Tuthill Land Acq/Dev	1997	Coconino	\$500,250	\$1,000,500
Coconino County	Pumphouse Greenway Acquisition	2000	Coconino	\$478,787	\$1,243,787
Coconino County	Lone Tree Park Development	2000	Coconino	\$81,213	\$171,357
Coconino County	Pumphouse Greenway	2001	Coconino	\$285,184	\$571,552
Coconino County	Peaks View County Park: Phase II	2002	Coconino	\$137,996	\$275,992
Coconino County	Fort Tuthill Amphitheater: Phase II	2003	Coconino	\$457,877	\$915,754
Coconino County	Tuba City County Park	2006	Coconino	\$782,420	\$1,564,840
Flagstaff	Foxglenn Park Extension	1993	Coconino	\$37,500	\$75,000
Flagstaff	Foxglenn Park Renovations	1999	Coconino	\$530,347	\$1,597,246
Flagstaff	Continental Park Land Acquisition	2000	Coconino	\$149,445	\$298,890
Flagstaff	Thorpe Park Improvement: Phase I	2003	Coconino	\$550,000	\$1,500,000
Flagstaff	6th Avenue BMX Park	2004	Coconino	\$298,681	\$597,363
Fredonia	Fredonia Little League Field Develop.	1992	Coconino	\$9,719	\$19,438
Navajo Nation	Upper Antelope Canyon Vis. Ctr: Ph. I	2004	Coconino	\$48,700	\$97,400
Page	Doland Sports Complex	1991	Coconino	\$244,256	\$488,512
Page	Page Sports Complex: Phase II	1993	Coconino	\$145,250	\$290,500
Page	Baseball/Soccer Fields Complex	2006	Coconino	\$775,685	\$1,561,685
Williams	Williams Ballfield Complex Development	1994	Coconino	\$30,000	\$60,000
Williams	Rodeo Grounds Park Improvements	1997	Coconino	\$49,000	\$116,740
Williams	Williams Aquatic Center	1999	Coconino	\$542,500	\$1,085,000
Williams	Recreation Center Park	2004	Coconino	\$47,600	\$95,290
GILA COUNTY					
Gila County	Fairgrounds Multi-Complex Park	2004	Gila	\$170,883	\$341,767
Globe	Round Mountain Park	1992	Gila	\$55,088	\$110,176
Globe	Multi-Purpose Recreation Facility	1999	Gila	\$350,000	\$700,000
Miami	Miami Memorial Park	1997	Gila	\$34,688	\$69,376
Miami	Miami Memorial Park: Phase II	2004	Gila	\$57,800	\$115,600
Payson	Rumsey Park Improvement Project	1992	Gila	\$40,000	\$80,000
Payson	Green Valley Lake Park	1993	Gila	\$186,763	\$373,526
Payson	Rumsey Park Development	2000	Gila	\$195,000	\$390,000
LA PAZ COUNTY					
Colorado River Indian T	Ahakhav Park Improvement	1999	La Paz	\$282,138	\$594,038
Parker	Western Park Ramada	1993	La Paz	\$20,500	\$41,000
Quartzsite	Quartzsite Park Recreation Area	1993	La Paz	\$24,750	\$49,500

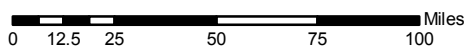
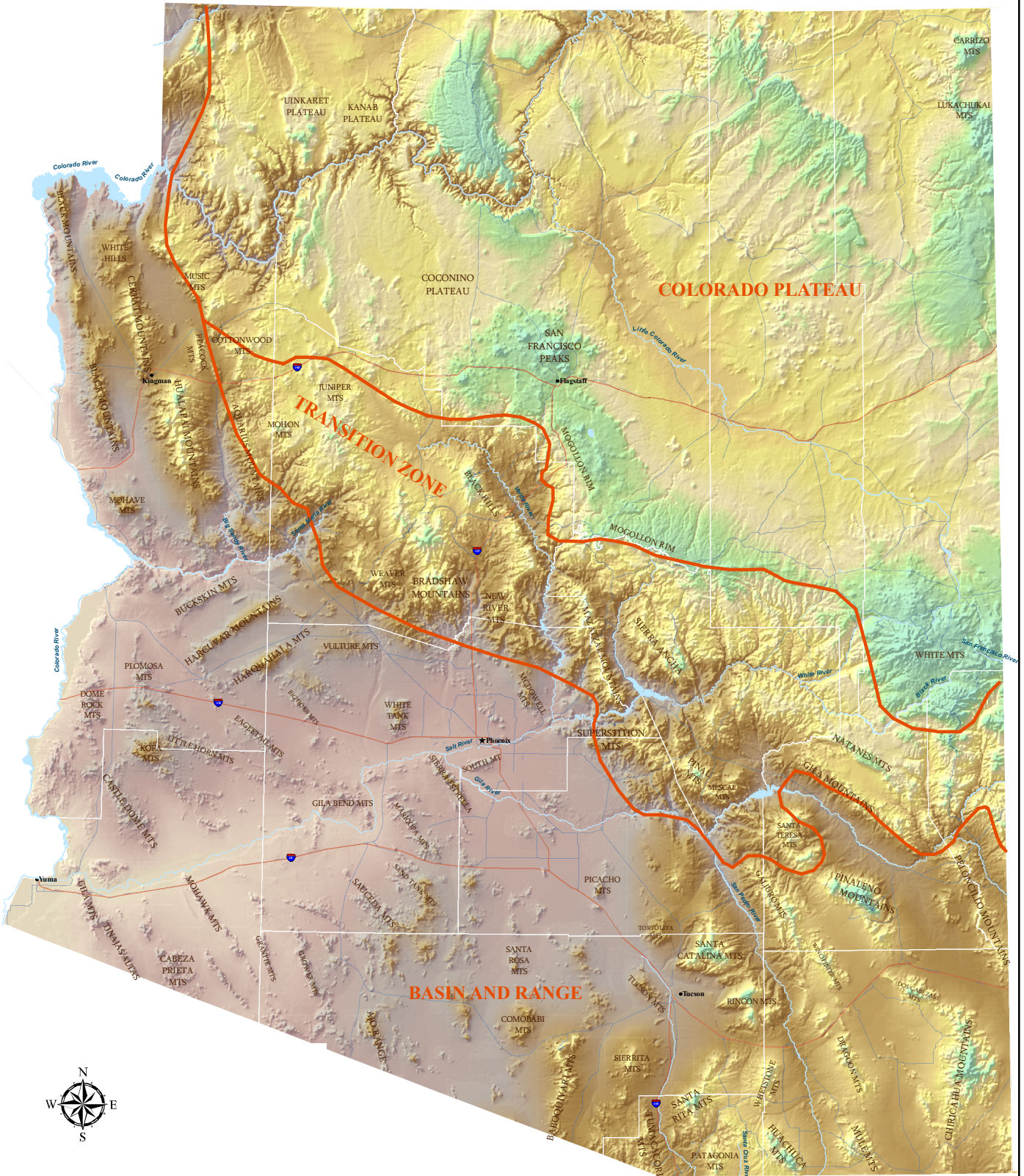
LRSP GRANT RECIPIENT	PROJECT TITLE	GRANT YEAR	COUNTY	LRSP AWARD	TOTAL PROJ COST
MARICOPA COUNTY					
Avondale	Avondale/Pendergast Pk Development	2004	Maricopa	\$600,000	\$1,200,000
Buckeye	Buckeye Aquatic Facility	1996	Maricopa	\$400,000	\$800,000
Buckeye	Ellis Field Lighting	1998	Maricopa	\$59,842	\$119,684
Buckeye	Earl Edgar Field Lighting	2001	Maricopa	\$62,500	\$125,000
Cave Creek	Cave Creek Gateway Park	1993	Maricopa	\$182,652	\$365,304
Chandler	Chandler Reg. Park Racquet Complex	1995	Maricopa	\$500,000	\$1,210,113
El Mirage	El Mirage Community Park	2005	Maricopa	\$750,000	\$2,602,310
Fountain Hills	Golden Eagle Community Park	1991	Maricopa	\$301,250	\$602,500
Fountain Hills	Golden Eagle Community Park: Ph. II	1994	Maricopa	\$363,250	\$726,500
Fountain Hills	Golden Eagle Community Park: Ph. IV	1996	Maricopa	\$390,500	\$781,000
Fountain Hills	Fountain Park Acq/Dev: Phase I	1998	Maricopa	\$700,000	\$1,400,000
Fountain Hills	Golden Eagle Community Park: Ph. V	1997	Maricopa	\$331,900	\$663,800
Fountain Hills	Four Peaks Neighborhood Park	1997	Maricopa	\$368,100	\$736,200
Gila Bend	Gila Bend Recreational Facilities	1995	Maricopa	\$145,450	\$290,900
Gilbert	Crossroads Park Improvements	1992	Maricopa	\$198,500	\$397,000
Gilbert	Mesquite Junior High Pool	1993	Maricopa	\$500,000	\$1,000,000
Gilbert	Freestone Park: Phase II	1994	Maricopa	\$200,000	\$400,000
Gilbert	Gilbert Pool Improvement	1995	Maricopa	\$100,000	\$200,000
Gilbert	McQueen Park: Phase III	2001	Maricopa	\$252,431	\$4,100,000
Gilbert	Water Tower Park Development	2005	Maricopa	\$312,631	\$625,263
Glendale	Desert Mirage Park Development	1995	Maricopa	\$300,000	\$600,000
Glendale	Greenbrier Park (Skunk Creek)	1996	Maricopa	\$239,550	\$479,100
Glendale	Manistee Serenity Park	1996	Maricopa	\$285,000	\$570,000
Glendale	Discovery Park Development	1998	Maricopa	\$351,125	\$702,250
Glendale	Arrowhead Meadows Linear Park	1998	Maricopa	\$224,006	\$448,012
Glendale	Skunk Crk Linear Pk Connector Link	1999	Maricopa	\$105,175	\$220,868
Glendale	Grand Canal Linear Pk ADA Playgrnd	2001	Maricopa	\$156,394	\$316,989
Glendale	Bicycle Park Acquisition and Develop.	2002	Maricopa	\$317,876	\$862,223
Glendale	West Glendale Skate/Water Play Pk	2003	Maricopa	\$571,530	\$1,665,030
Glendale	City/School District Joint Use Park	2004	Maricopa	\$712,512	\$1,619,743
Glendale	Western Glendale Reg. Park: Ph. II	2005	Maricopa	\$707,325	\$1,593,994
Goodyear	Litchfield Park Lighting	1992	Maricopa	\$71,250	\$142,500
Goodyear	Goodyear Bicycle Path Construction	1993	Maricopa	\$49,828	\$99,656
Goodyear	Goodyear Park Equipment	1993	Maricopa	\$17,500	\$35,000
Litchfield Park	Litchfield Park City Parks Dev	1993	Maricopa	\$26,546	\$53,092
Litchfield Park	Litchfield Park Rec Center Enhance	1993	Maricopa	\$95,000	\$190,000
Maricopa County	Two Ballfields Area Lighting/Fencing	1992	Maricopa	\$61,209	\$122,418
Maricopa County	McDowell Mountain Pk Improvements	2004	Maricopa	\$150,000	\$300,000
Mesa	Red Mountain District	1992	Maricopa	\$410,568	\$821,136
Mesa	Alta Mesa Park	1995	Maricopa	\$208,800	\$417,600
Mesa	Whitman (frmly Inglewood) Pk Impr	1994	Maricopa	\$267,600	\$535,200
Mesa	Falcon Hill Park	1995	Maricopa	\$246,700	\$493,400
Mesa	Rancho Del Mar Park	1995	Maricopa	\$153,500	\$307,000
Mesa	Mesa Summit Park Play Area	1998	Maricopa	\$251,622	\$599,100
Mesa	Mesa Harmony Park Play Area	1997	Maricopa	\$112,320	\$227,040
Peoria	Apache Neighborhood Park	1993	Maricopa	\$198,550	\$397,100
Peoria	Sweetwater (frmly Oakwood) Park	1991	Maricopa	\$240,000	\$480,000
Peoria	Calbrisa Neighborhood Park	1997	Maricopa	\$178,681	\$357,362
Peoria	Sundance Neighborhood Park	2000	Maricopa	\$560,000	\$1,683,795
Peoria	Rio Vista (frmly Peoria) Community Pk	2002	Maricopa	\$585,324	\$7,263,973
Phoenix	Desert West Park Development	1992	Maricopa	\$206,166	\$412,332
Phoenix	Verde Park Renovation	1992	Maricopa	\$123,544	\$247,088
Phoenix	Arcadia Park Playground Improvement	1993	Maricopa	\$32,500	\$65,000
Phoenix	Palomino Park Improvements	1993	Maricopa	\$60,000	\$120,000
Phoenix	87th Ave & Encanto Park Development	1996	Maricopa	\$171,200	\$342,400
Phoenix	Dynamite Pk Playgrnd/Tennis Courts	2001	Maricopa	\$79,799	\$159,598
Phoenix	Rio Salado Central Avenue Gateway	2002	Maricopa	\$275,000	\$915,000

LRSP GRANT RECIPIENT	PROJECT TITLE	GRANT YEAR	COUNTY	LRSP AWARD	TOTAL PROJ COST
Phoenix	Falcon Park Athletic Field Lighting	2002	Maricopa	\$125,000	\$250,000
Phoenix	Circle K Park Athletic Field Lighting	2002	Maricopa	\$62,500	\$125,000
Phoenix	Long Homestead Park Development	2003	Maricopa	\$362,025	\$1,818,518
Phoenix	Puerto Park Development	2004	Maricopa	\$202,720	\$405,440
Queen Creek	Queen Creek Wash Acquisition	1998	Maricopa	\$95,000	\$190,000
Queen Creek	Wash/Open Space Acquisition	2002	Maricopa	\$499,500	\$999,000
Scottsdale	Cholla Park Development	1991	Maricopa	\$359,750	\$719,500
Scottsdale	Scottsdale Community Parks	1991	Maricopa	\$219,765	\$439,530
Scottsdale	Sports Lighting Projects	1992	Maricopa	\$77,000	\$154,000
Scottsdale	Rio Montana Park Development	1993	Maricopa	\$293,026	\$586,052
Scottsdale	Eldorado Skate Park	1997	Maricopa	\$60,000	\$120,000
Scottsdale	Scottsdale Ranch Park Desert Garden	2000	Maricopa	\$250,000	\$500,000
Scottsdale	CAP Basin Sports Complex Develop.	2001	Maricopa	\$500,000	\$1,000,000
Scottsdale	McDowell Mtn. Ranch Pk/Aquatic Ctr	2002	Maricopa	\$225,000	\$450,000
Scottsdale	Chaparral Park Expansion	2004	Maricopa	\$500,000	\$1,000,000
Surprise	Lizard Run Rec. Corridor/Greenbelt	2005	Maricopa	\$773,259	\$1,546,519
Tempe	Daley Park Access/Playground	1993	Maricopa	\$35,750	\$71,500
Tempe	Park Rio Norte	1992	Maricopa	\$161,850	\$323,700
Tempe	Rio Salado Linear Park	1995	Maricopa	\$320,000	\$640,000
Tempe	Rio Salado Linear Park Development	1994	Maricopa	\$65,900	\$131,800
Tempe	McClintock Swimming Pool Renovation	1994	Maricopa	\$132,700	\$1,005,400
Tempe	Escalante Park Improvements	1996	Maricopa	\$79,321	\$158,642
Tempe	Warner-Hardy Softball Complex	1997	Maricopa	\$630,000	\$2,250,000
Wickenburg	Sunset (Wellik) Park Development	1991	Maricopa	\$122,000	\$244,000
Wickenburg	Sunset Park Picnic Tables/Tennis Crts	1994	Maricopa	\$109,100	\$218,200
Wickenburg	Municipal Skate Park	2003	Maricopa	\$101,157	\$202,315
Wickenburg	Coffinger Park Ramada	2004	Maricopa	\$94,737	\$189,474
Wickenburg	Hassayampa School Playground	2005	Maricopa	\$64,512	\$129,025
MOHAVE COUNTY					
Bullhead City	Recreational Complex Development	1994	Mohave	\$149,940	\$299,880
Bullhead City	Rotary Park Soccer Field Improvement	2001	Mohave	\$192,500	\$412,000
Bullhead City	Rotary Park Ballfields: Phase I	2003	Mohave	\$67,000	\$134,000
Bullhead City	Rotary Park Ballfields: Phase II	2004	Mohave	\$302,000	\$604,000
Bullhead City	Rotary Park Ballfields: Phase III	2005	Mohave	\$288,500	\$577,000
Bullhead City	Rotary Park Soccer Field Lighting	2006	Mohave	\$247,410	\$494,820
Colorado City	Heritage Park	1991	Mohave	\$19,700	\$39,400
Hualapai Tribe	Hualapai Diamond Creek Rd Rec Dev	1993	Mohave	\$17,760	\$35,520
Hualapai Tribe	Rodeo Circle Park: Phase I	1994	Mohave	\$143,900	\$287,800
Hualapai Tribe	Rodeo Circle Park: Phase II	1997	Mohave	\$140,000	\$307,450
Kingman	Southside Pk Control/Concession Bldg	1997	Mohave	\$95,000	\$190,000
Kingman	Centennial Park Concession Building	1998	Mohave	\$99,620	\$199,240
Kingman	Walleck Ranch Park	2001	Mohave	\$254,008	\$508,016
Kingman	Metcalfe/Firefighter's Park Improve.	2002	Mohave	\$134,513	\$269,026
Lake Havasu City	Lake Havasu City Tennis Complex	1997	Mohave	\$256,573	\$513,146
Mohave County	Heritage Park	2001	Mohave	\$358,000	\$716,000
Navajo County					
Arizona State Parks	Homolovi Ruins SP Facilities Develop.	1992	Navajo	\$148,944	\$297,888
Holbrook	Holbrook Pool Resurfacing	1993	Navajo	\$30,000	\$60,000
Navajo County	Heber/Overgaard Pk MultiPurpose Crt	1992	Navajo	\$10,500	\$21,000
Pinetop-Lakeside	Civic Center Park	1999	Navajo	\$254,700	\$509,400
Show Low	Family Aquatic & Fitness Park	1993	Navajo	\$500,000	\$1,000,000
Snowflake	Snowflake Skatepark	2002	Navajo	\$124,360	\$248,720
Taylor	Taylor Park Project	1992	Navajo	\$58,750	\$117,500
Taylor	Freeman Park Project Improvements	1994	Navajo	\$100,000	\$200,000
White Mtn Apache Tr.	Tribal Park Development	1994	Navajo	\$30,000	\$60,000
Winslow	Sacred Heart Park Construction	1993	Navajo	\$27,000	\$54,000
Winslow	Winslow Pool Renovation	1997	Navajo	\$150,000	\$300,000

LRSP GRANT RECIPIENT	PROJECT TITLE	GRANT YEAR	COUNTY	LRSP AWARD	TOTAL PROJ COST
Pima County					
Oro Valley	Dennis Weaver Park Playground	1993	Pima	\$48,960	\$97,920
Oro Valley	Dennis Weaver Park Renovation	1997	Pima	\$150,000	\$300,000
Pascua Yaqui Tribe	Potam Park Redevelopment	1997	Pima	\$23,000	\$46,000
Pima County	Colossal Cave Land Acquisition	1992	Pima	\$650,000	\$3,300,000
Pima County	Agua Caliente RP Water Res Rec Dev	1991	Pima	\$38,500	\$77,000
Pima County	Gates Pass Overlook Improvements	1994	Pima	\$50,900	\$101,800
Pima County	Pegler Wash Recreation Area RR	2002	Pima	\$60,000	\$125,000
Pima County	Brandi Fenton Memorial Park	2005	Pima	\$699,821	\$1,399,642
Pima Co Flood Control	Pima Co Memorial Tree Walk Irrigation	1994	Pima	\$34,400	\$68,800
Tucson	Rodeo Park Renovation	1993	Pima	\$130,000	\$260,000
Tucson	Jefferson Park Development	1993	Pima	\$28,000	\$56,000
Tucson	Community Sports Park Development	1993	Pima	\$246,500	\$493,000
Tucson	Gene Reid Park Renovation	1992	Pima	\$115,500	\$231,000
Tucson	Randolph Tennis Center	1991	Pima	\$179,000	\$358,000
Tucson	Freedom/Kennedy/Lakeside/Murrieta Pk	1992	Pima	\$371,250	\$742,500
Tucson	Four Tucson Parks Improvements	1994	Pima	\$100,000	\$200,000
Tucson	Jacobs Park Soccer Complex Develop.	1994	Pima	\$400,000	\$800,000
Tucson	Mansfield & Menlo Parks Waterslides	1994	Pima	\$136,500	\$273,000
Tucson	Santa Rosa Park Acquisition/Develop.	1995	Pima	\$200,000	\$400,000
Tucson	Juhan Park Development	1995	Pima	\$500,000	\$1,000,000
Tucson	Golf Links Softball/Soccer Fields	1996	Pima	\$500,000	\$1,000,000
Tucson	Rolling Hills Park Development	1996	Pima	\$200,000	\$400,000
Tucson	Kino & 36th Street Park Development	1998	Pima	\$700,000	\$1,400,000
Pinal County					
Ak-Chin Indian Comm.	Playground/Baseball Park Development	2003	Pinal	\$203,750	\$407,500
Apache Junction	Prospector Park: Phase III	1994	Pinal	\$225,000	\$450,000
Apache Junction	Prospector Park Lighting/Ramadas	1998	Pinal	\$75,000	\$150,000
Apache Junction	Superstition Shadows Pk Improvement	2001	Pinal	\$250,000	\$500,000
Arizona State Parks	Picacho Peak SP Restroom/Shower	1992	Pinal	\$113,851	\$227,702
Arizona State Parks	Oracle State Park Improvements	1994	Pinal	\$198,000	\$396,000
Casa Grande	Dave White Regional Park Expansion	1992	Pinal	\$100,000	\$200,000
Casa Grande	Desert Valley Park Development	1994	Pinal	\$29,700	\$59,400
Casa Grande	O'Neil Park Renovations	2001	Pinal	\$75,000	\$150,000
Coolidge	Coolidge Main Street Park	1993	Pinal	\$15,500	\$31,000
Coolidge	Multi-Purpose Ballfield/Tennis Crt Dev	1998	Pinal	\$105,263	\$210,526
Coolidge	Coolidge Park Development	2004	Pinal	\$132,705	\$265,410
Eloy	Jones Park Skate Park	2004	Pinal	\$75,000	\$150,000
Florence	Heritage Park	1992	Pinal	\$70,000	\$140,000
Kearny	Kearny Pool Improvements	1994	Pinal	\$60,800	\$121,600
Kearny	Kearny Parks Renovation	1995	Pinal	\$8,314	\$147,500
Kearny	Kearny Lake Ramadas	2004	Pinal	\$10,000	\$24,000
Maricopa	Pacana Park	2006	Pinal	\$775,000	\$5,286,102
Pinal County	Dudleyville Park Ballfield Development	1999	Pinal	\$25,500	\$51,000
Pinal County	Liberty Park Improvements	2003	Pinal	\$17,204	\$35,843
Superior	Roosevelt School Park Project	1993	Pinal	\$47,500	\$95,000
Superior	Community Swimming Pool	2001	Pinal	\$265,000	\$530,000
Santa Cruz County					
Patagonia	Richardson Park Renovation	1999	Santa Cruz	\$42,652	\$91,514
Santa Cruz County	Guevavi Ranch Preserve: Phase I	1991	Santa Cruz	\$342,500	\$685,000
Santa Cruz County	Guevavi Ranch Preserve	1993	Santa Cruz	\$202,500	\$405,000
Santa Cruz County	Guevavi Ranch Preserve: Phase III	1994	Santa Cruz	\$25,000	\$50,000
Santa Cruz County	La Cancha Park Renovation	1994	Santa Cruz	\$27,000	\$54,000
Santa Cruz County	Tubac Park	1997	Santa Cruz	\$110,000	\$220,000
Santa Cruz County	West Rio Rico Multi-Use Park	2003	Santa Cruz	\$435,864	\$1,037,772
Santa Cruz County	Ronald R. Morriss Park Improvements	2004	Santa Cruz	\$50,000	\$100,000

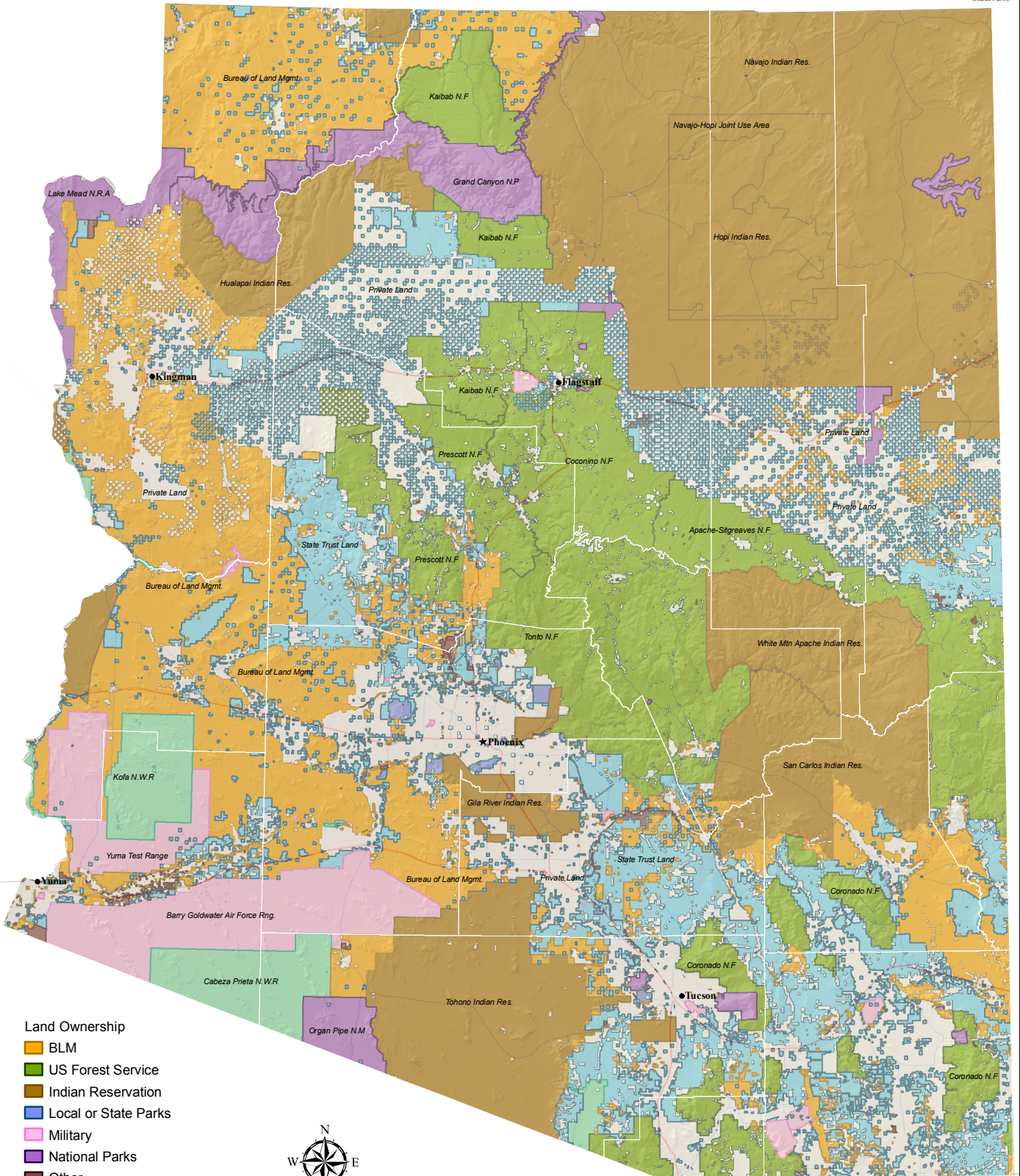
LRSP GRANT RECIPIENT	PROJECT TITLE	GRANT YEAR	COUNTY	LRSP AWARD	TOTAL PROJ COST
Yavapai County					
Camp Verde	Camp Verde Heritage Pool Develop.	1994	Yavapai	\$150,000	\$300,000
Camp Verde	Camp Verde Parks Improvements	1999	Yavapai	\$202,801	\$405,602
Camp Verde	Camp Verde Community Park	2003	Yavapai	\$510,078	\$1,279,438
Chino Valley	Community Center Park	2000	Yavapai	\$98,000	\$198,000
Chino Valley	Community Center Park: Phase II	2004	Yavapai	\$175,000	\$350,000
Chino Valley	Community Center Park: Phase III	2006	Yavapai	\$575,125	\$1,150,250
Clarkdale	Selna Ballfield Lighting Replacement	1999	Yavapai	\$28,900	\$57,800
Clarkdale	Centerville Park	2001	Yavapai	\$172,400	\$344,800
Cottonwood	Riverfront Regional Park: Phase II	1992	Yavapai	\$170,000	\$340,000
Cottonwood	Cottonwood Public Pool Improvements	1995	Yavapai	\$81,500	\$163,000
Cottonwood	Ballfield Lighting/Improvements	1998	Yavapai	\$152,000	\$304,000
Cottonwood	Riverfront Park Expansion	2002	Yavapai	\$550,197	\$1,100,394
Jerome	Sliding Jail Park	1993	Yavapai	\$21,000	\$42,000
Prescott	J.S. Acker Park Development	1998	Yavapai	\$75,000	\$150,000
Prescott Valley	Mountain Valley Park Acquisition	1992	Yavapai	\$100,000	\$200,000
Prescott Valley	Mountain Valley Park Land Acq #2	1993	Yavapai	\$75,000	\$150,000
Prescott Valley	Mountain Valley Park Amphitheater	1995	Yavapai	\$160,125	\$519,250
Prescott Valley	Mountain Valley Aquatic Center Dev	1994	Yavapai	\$300,000	\$600,000
Prescott Valley	Fain Park	1997	Yavapai	\$149,525	\$299,050
Prescott Valley	Mountain Valley Park Ballfield Lighting	2000	Yavapai	\$265,000	\$600,000
Sedona	Posse Grounds Park Acquisition	1995	Yavapai	\$300,000	\$600,000
Sedona	Sedona Cultural Park	1996	Yavapai	\$586,600	\$1,173,200
Sedona	Sunset Park	2000	Yavapai	\$422,414	\$1,162,865
Yavapai County	Henry Cordes Park	1998	Yavapai	\$166,421	\$332,842
Yavapai County	Quail Ridge Park Acq/Devel	1999	Yavapai	\$243,400	\$533,400
Yavapai County	Kyllo Park Acq/Devel	1999	Yavapai	\$63,600	\$130,100
Yavapai County	Windmill Park	2000	Yavapai	\$140,250	\$280,500
Yavapai County	High Desert Park	2001	Yavapai	\$75,000	\$150,000
Yavapai County	Oak Creek Elem. School Sports Lighting	2002	Yavapai	\$82,392	\$164,784
Yavapai-Apache Tribe	Heritage Park	1996	Yavapai	\$104,300	\$208,600
Yuma County					
San Luis	Outdoor Recreation Facilities: Phase II	1992	Yuma	\$37,190	\$74,380
Somerton	Joe Munoz Park: Phase I	1995	Yuma	\$27,150	\$54,300
Somerton	Heritage Pool	1998	Yuma	\$219,521	\$556,198
Wellton	Wellton Swimming Pool	1995	Yuma	\$100,000	\$420,767
Yuma	Netwest Park Project	1993	Yuma	\$46,937	\$93,874
Yuma	Sunrise Optimist Recreational Complex	1996	Yuma	\$164,950	\$329,900
Yuma	Winsor Rotary Park	1996	Yuma	\$174,100	\$348,200
Yuma	Friendship Park Development	1997	Yuma	\$125,763	\$251,526
Yuma	Yuma West Wetlands Park Devel	1999	Yuma	\$544,737	\$1,089,474
Yuma	Riverfront Gateway Park	2000	Yuma	\$165,548	\$332,000
Yuma County	Yuma Co Fair Restrooms Improvement	1994	Yuma	\$24,200	\$48,400

Arizona Landforms

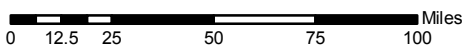


This map is intended for reference use only. Accuracy of map information is not guaranteed. Arizona State Parks assumes no responsibility for errors, omissions, or inconsistencies in this map.

Arizona Land Ownership

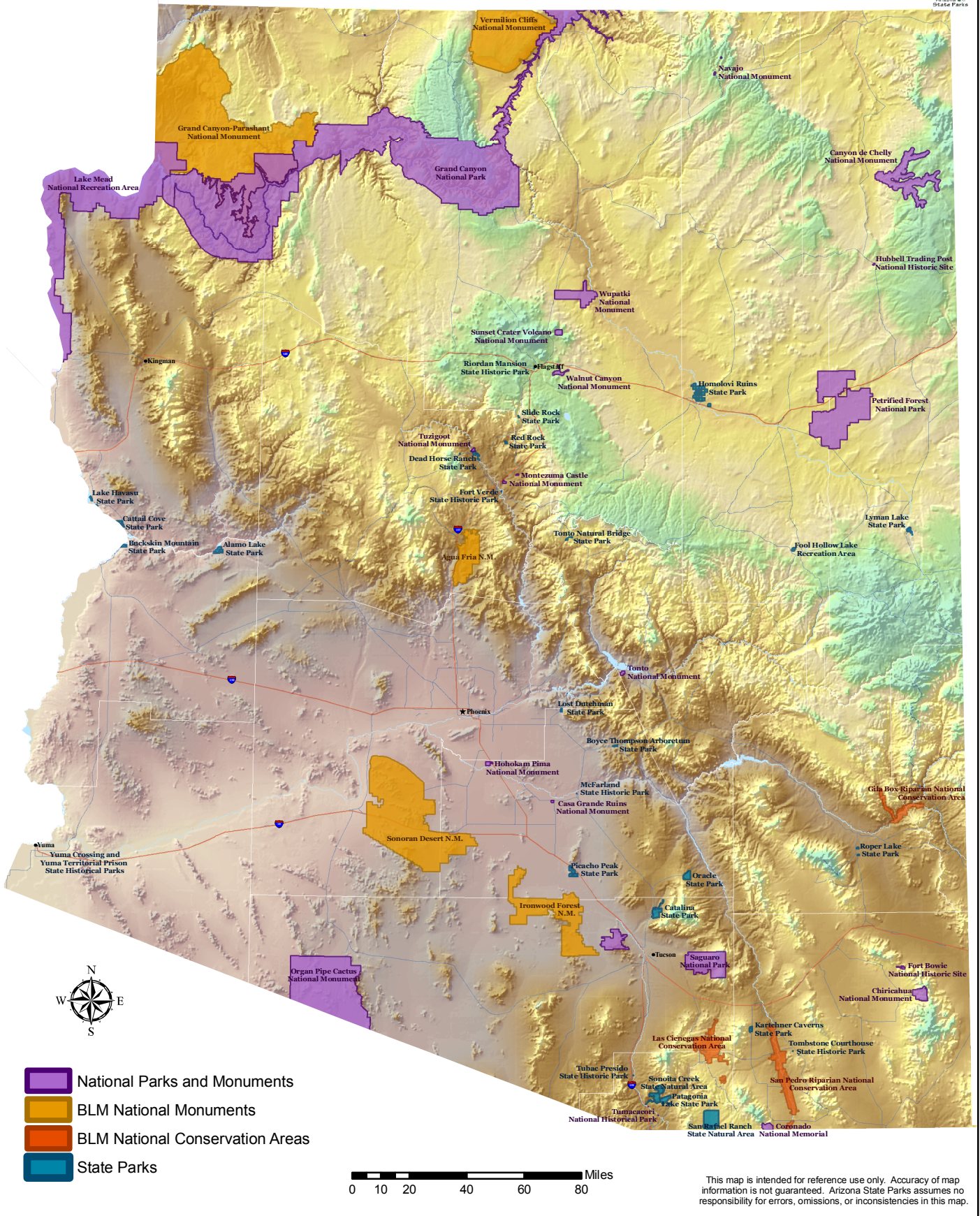


- Land Ownership**
- BLM
 - US Forest Service
 - Indian Reservation
 - Local or State Parks
 - Military
 - National Parks
 - Other
 - Private
 - State Trust
 - National Wildlife Refuge



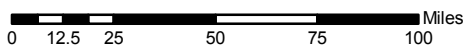
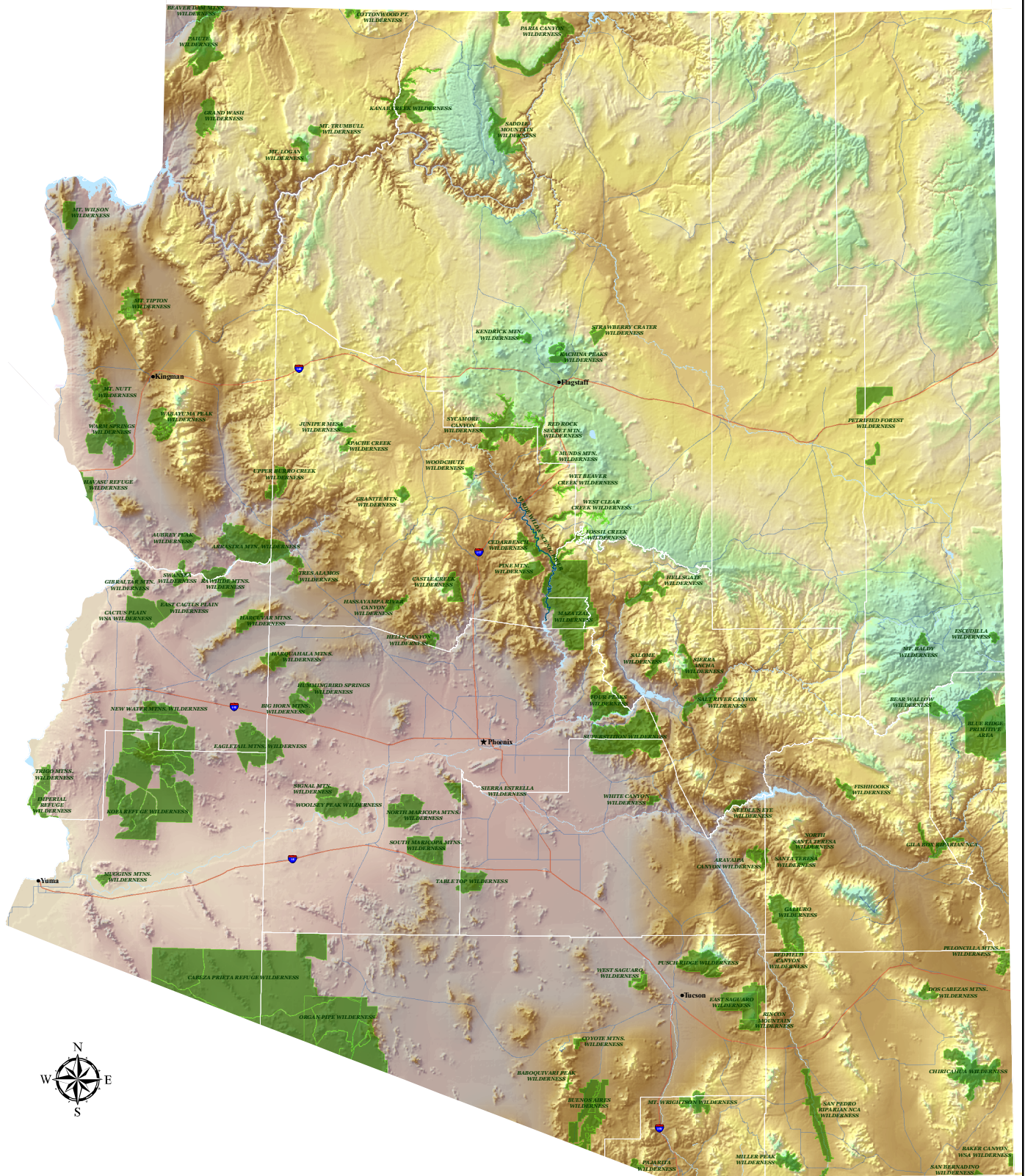
This map is intended for reference use only. Accuracy of map information is not guaranteed. Arizona State Parks assumes no responsibility for errors, omissions, or inconsistencies in this map.

National and State Parks in Arizona



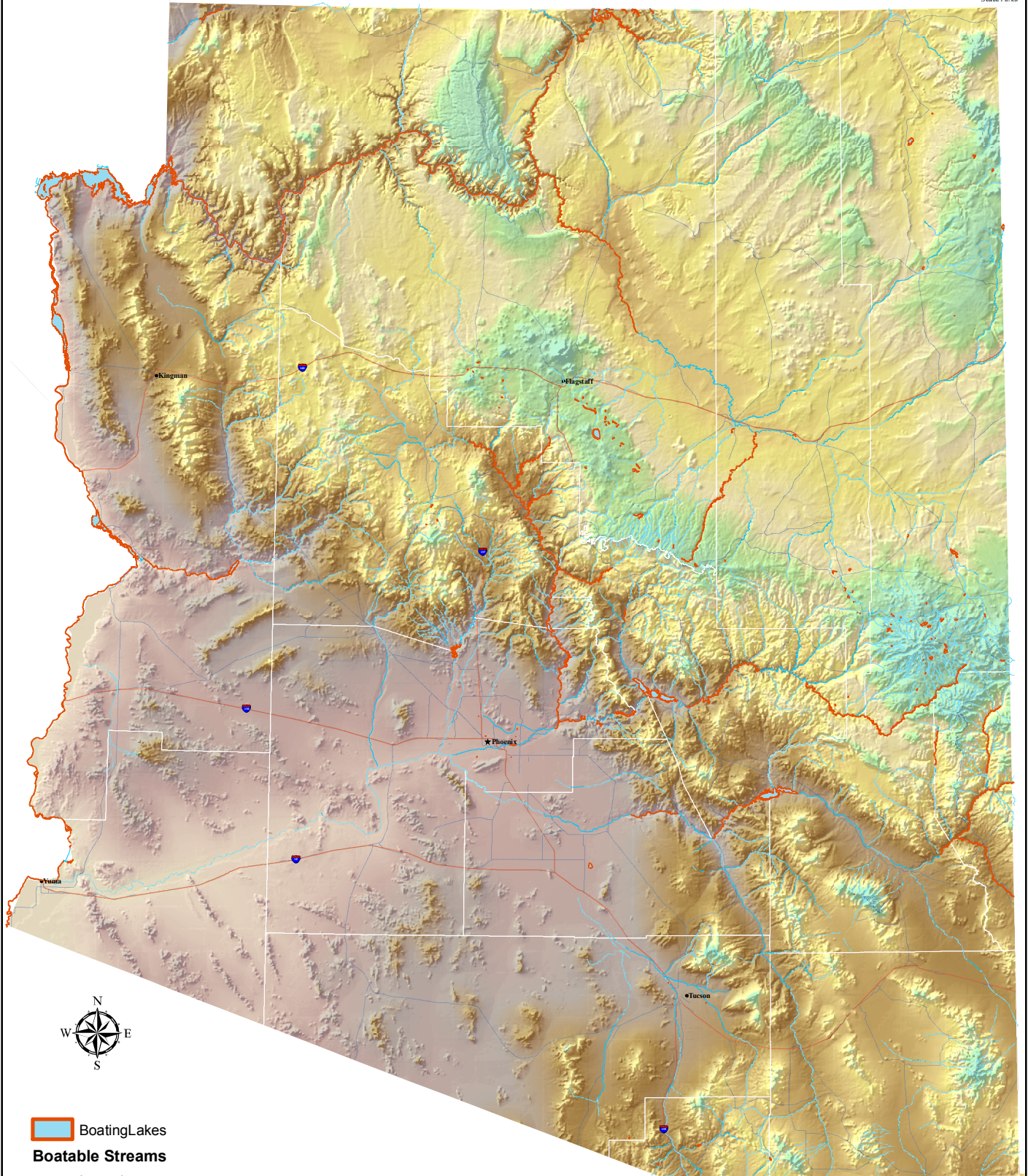
This map is intended for reference use only. Accuracy of map information is not guaranteed. Arizona State Parks assumes no responsibility for errors, omissions, or inconsistencies in this map.





Wilderness Areas in Arizona

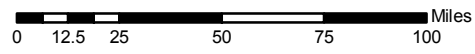


This map is intended for reference use only. Accuracy of map information is not guaranteed. Arizona State Parks assumes no responsibility for errors, omissions, or inconsistencies in this map.

Boatable Lakes and Streams in Arizona



-  BoatingLakes
- Boatable Streams**
-  Intermittent
-  Perennial
-  Artificial Stream Path



This map is intended for reference use only. Accuracy of map information is not guaranteed. Arizona State Parks assumes no responsibility for errors, omissions, or inconsistencies in this map.