



ARIZONA STATE PARKS & TRAILS

Arizona State Parks Board
September 16, 2021

Dale Larsen – Chair

John Sefton – Vice Chair, Lisa Atkins, Jeffrey Buchanan,
Debbie Johnson, Sarah King, Terri Palmberg

AGENDA – A

Call to Order



AGENDA – B

Pledge of Allegiance

AGENDA – C

Member Roll Call

Dale Larsen (Chair)

John Sefton (Vice-Chair)

Lisa Atkins

Jeffrey Buchanan

Debbie Johnson

Sarah King

Terri Palmberg

AGENDA – C

Mission Statement

“As Board members we are gathered today to be the stewards and voice of the Arizona State Parks and its Mission Statement to manage and conserve Arizona’s natural, cultural and recreation resources for the benefit of the people, both in our parks and through our partners.”

AGENDA – D1

Approval of Minutes

The Board will review and may consider action to approve the meeting minutes from August 31, 2021.

AGENDA – D1

Motion:

I move to approve the meeting minutes from August 31, 2021.

AGENDA – D2

Introduction of the Sarah King

Dale Larsen, Chairman, Arizona State Parks Board



AGENDA – D3

Economic Contribution and Impacts of Arizona State Parks and Trails

-Dari Duval, Economic Impact Analyst, University of Arizona Cooperative Extension, Department of Agriculture and Resource Economics.

ECONOMIC CONTRIBUTION & IMPACTS OF ARIZONA'S STATE PARKS – FY2020

Dari Duval

University of Arizona Cooperative Extension,
Regional Economic Analysis Program



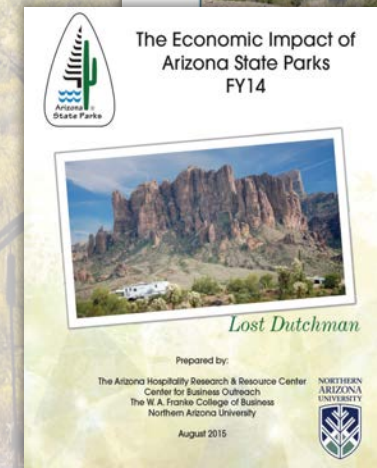
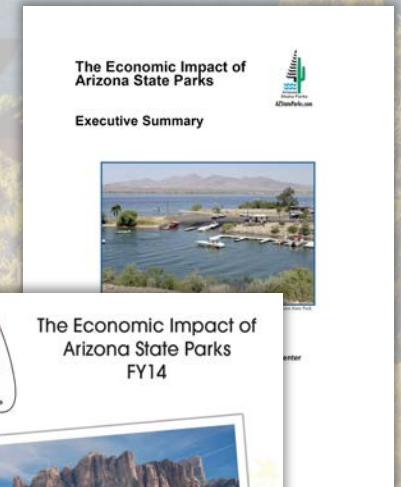
Outline

- About the Study
- Visitor Survey
- Methods
- Results
- Effects of COVID-19
- Conclusions & Discussion



About the Study

- Quantifies importance of Arizona State Parks to state & local economies in Arizona for FY2020
 - *Economic impacts* for 13 counties where state parks located
 - *Economic contribution* to state economy
- Brief analysis of effects of COVID-19 pandemic on visits to Arizona State Parks
- Builds on previous economic impact studies from FY2014 & FY2007



Arizona State Park Visitor Survey

- Study relies on survey of Arizona State Park visitors between July 2019 & September 2020
 - 10,037 observations collected from 28 parks
 - 8,983 responses with useable expenditure data
- Collected per-party visitor spending on different categories & visitor origin

The image shows a screenshot of the 'ARIZONA STATE PARKS PARKS VISITOR SURVEY 2019-2020' form. The form includes fields for 'State of' (with a dropdown menu), 'ID' (with a grid for digits), and 'Date of Birth' (with a grid for digits). It contains several numbered questions with checkboxes and radio buttons. Question 1 asks if the respondent has been to an Arizona State Park before and how many times in the past 2 years. Question 2 asks if they visited any of 28 other state parks within the past 2 years, listing parks such as Alamo Lake State Park, Apache-Sitgreaves National Monument, and many others. Question 3 asks how far in advance they plan their trip. Question 4 asks where their current residence is, with options for full-time Arizona resident, part-time Arizona resident, out-of-state visitor, and international visitor, each with a corresponding zip code field.

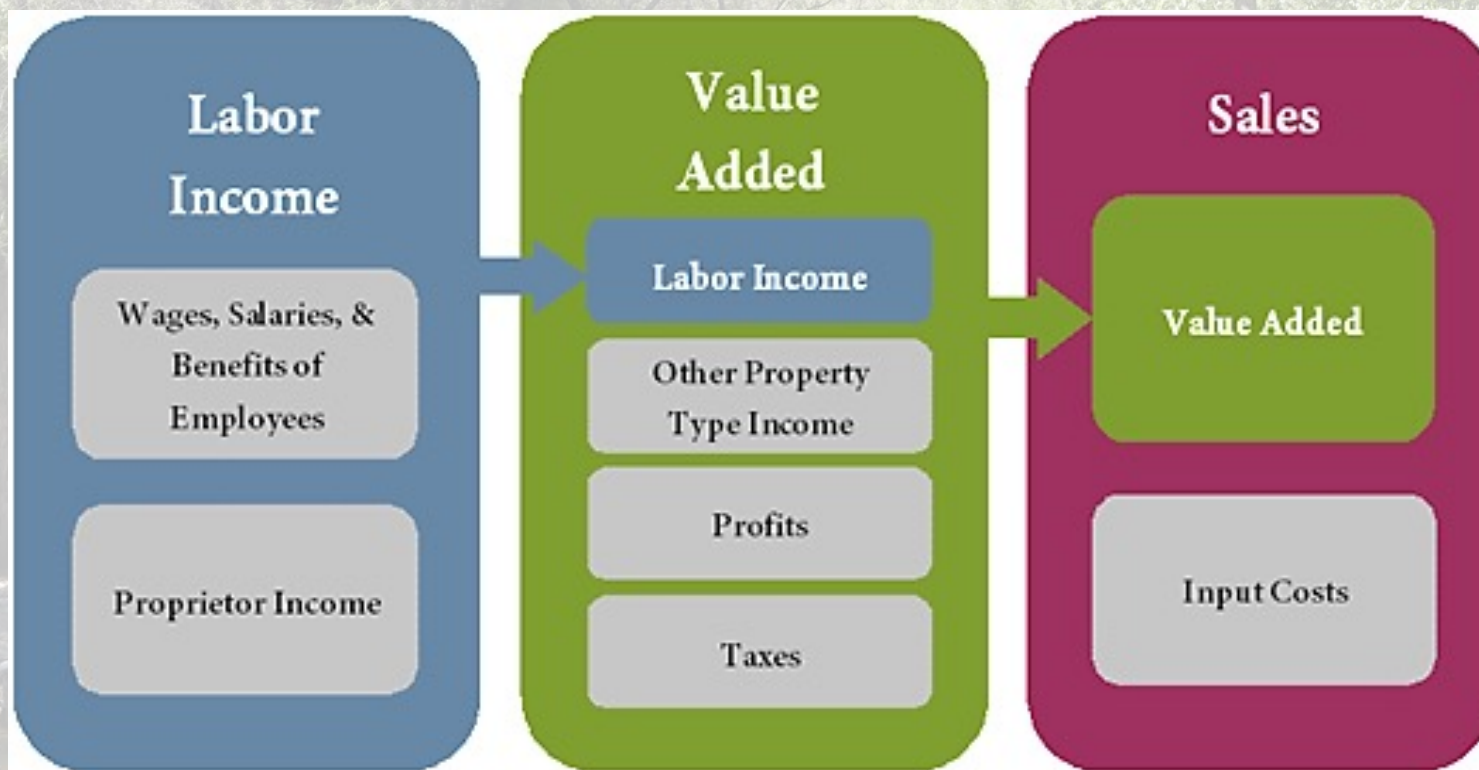
Economic Impact & Contribution Analysis

- Methods to estimate the flow of money through a region's economy
- Both estimate “**multiplier effects**”
 - **Direct effects**: initial visitor spending on goods and services
 - **Indirect effects**: effects of tourism-related businesses spending on inputs from other local businesses to serve visitors
 - **Induced effects**: effects of individuals employed in tourism-related businesses spending incomes in local economy
- We estimate these effects using the IMPLAN model

Analyses Used in Report

Measure	Economic Impact	Economic Contribution
Geography	County-level	State-level
Visitor Spending	Only non-local visitor spending	All visitor spending, local & non-local visitors
Economic Activity	Net-new economic activity generated in county by park(s), spending from outside the county	All existing economic activity in state associated with park(s), whether from outside state or recirculation of money in state

Economic Impacts & Contributions



Results

- Total spending by all visitors to Arizona State Parks estimated at \$332 million in FY2020, including all spending in and within 50 miles of state parks
- Since FY2014 study, total expenditures by non-local visitors increased over 20%
 - Non-local expenditures per visit ↓ 6%
 - Visits ↑ 30%
 - Results: higher overall spending in the state



Results

Results

FY2020 statewide economic contribution of visitor spending in & around AZ State Parks, including multiplier effects:

- \$449 million in sales
- \$272 million in Gross State Product
- 4,200 jobs & \$172 million in income

Statewide Economic Contribution of Arizona State Park Visitor Spending

Impact Type	Direct Effect	Indirect Effect	Induced Effect	Total Effect
Jobs	2,828	527	819	4,173
Labor Income	\$103 m	\$28 m	\$41 m	\$172 m
Value Added	\$153 m	\$45 m	\$74 m	\$272 m
Sales (Output)	\$235 m	\$87 m	\$128 m	\$449 m

Results

- Top five state parks in terms of total visits in FY2020:
 - Lake Havasu State Park (533,757 visits)
 - Slide Rock State Park (345,739 visits)
 - Catalina State Park (257,692 visits)
 - Patagonia Lake State Park (235,224 visits)
 - Dead Horse Ranch State Park (205,793 visits)
- Largest county-level economic impact in Mohave County with roughly \$83 million in sales, including multiplier effects, and 945 jobs



Northern Arizona County Economic Impacts



Mohave County
Sales: \$83.0 million
Value Added: \$47.8 million
Jobs: 945 Parks: 3

Coconino County
Sales: \$45.1 million
Value Added: \$26.8 million
Jobs: 463 Parks: 2

Navajo County
Sales: \$15.0 million
Value Added: \$8.7 million
Jobs: 176 Parks: 2

Apache County
Sales: \$3.3 million
Value Added: \$2.0 million
Jobs: 44 Parks: 1

Central Arizona County Economic Impacts

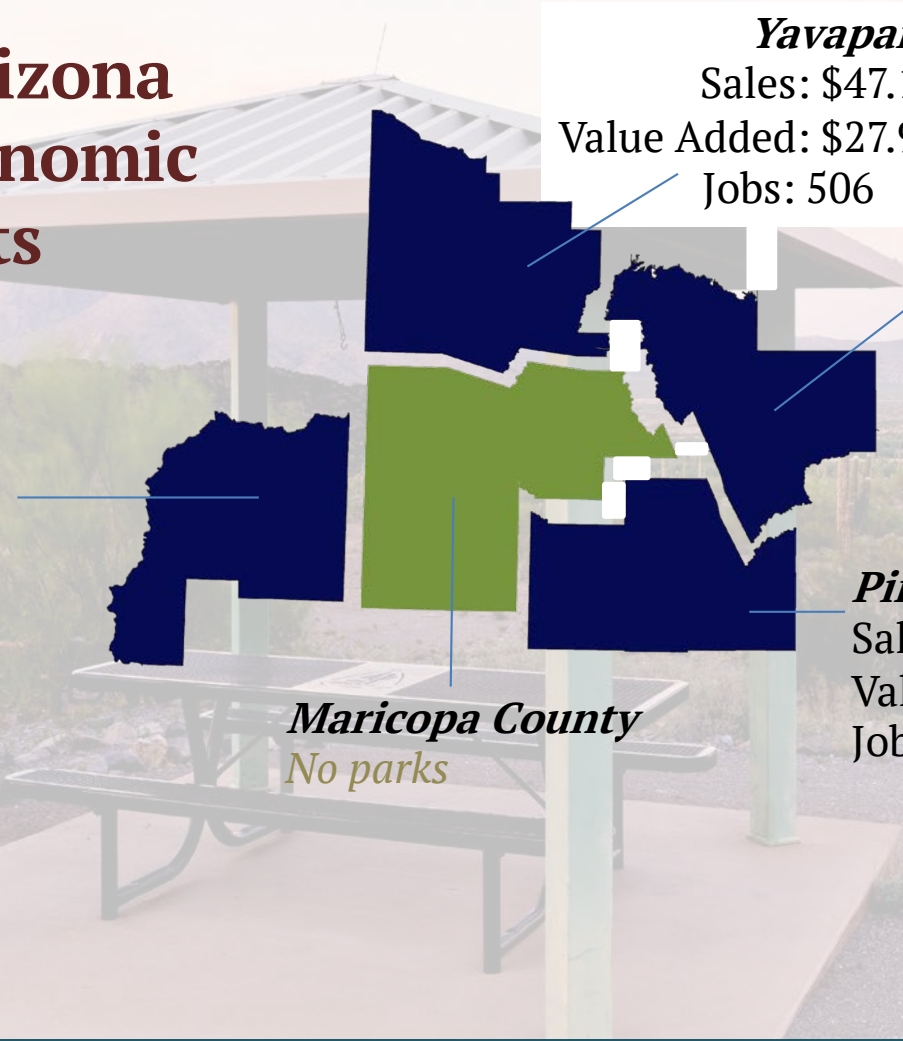
La Paz County
Sales: \$14.7 million
Value Added: \$9.2 million
Jobs: 181 Parks: 3

Maricopa County
No parks

Yavapai County
Sales: \$47.1 million
Value Added: \$27.9 million
Jobs: 506 Parks: 7

Gila County
Sales: \$6.3 million
Value Added: \$3.4 million
Jobs: 73 Parks: 1

Pinal County
Sales: \$24.3 million
Value Added: \$14.7 million
Jobs: 301 Parks: 4



Southern Arizona County Economic Impacts

Yuma County

Sales: \$6.8 million
Value Added: \$3.9 million
Jobs: 74 Parks: 2

Pima County

Sales: \$12.3 million
Value Added: \$7.3 million
Jobs: 140 Parks: 1

Graham County

Sales: \$3.7 million
Value Added: \$2.2 million
Jobs: 46 Parks: 2

Santa Cruz County

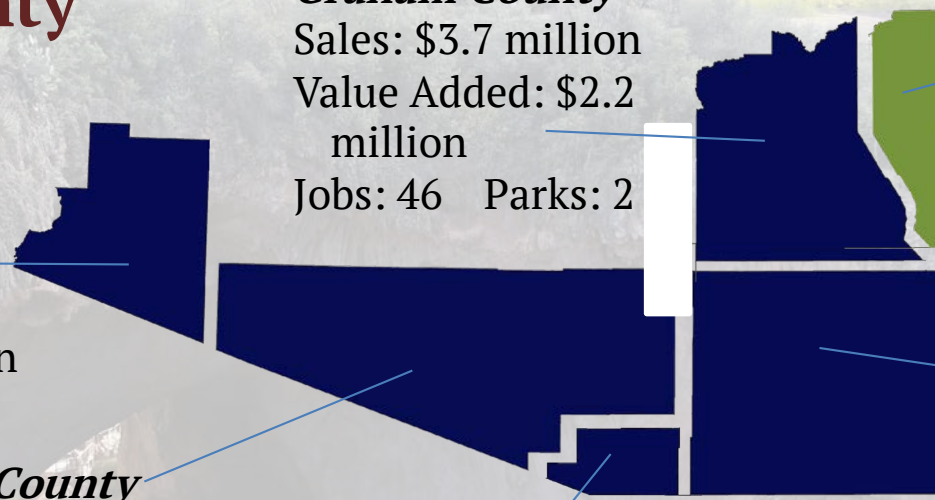
Sales: \$9.8 million
Value Added: \$5.7 million
Jobs: 117 Parks: 4

Greenlee County

No parks

Cochise County

Sales: \$17.2 million
Value Added: \$10.2 million
Jobs: 198 Parks: 2



Comparison to Past Studies

	FY2007	FY2014	FY2020
Parks	27	27	34
Total Visits	2,298,155	2,294,420	2,971,844
INFLATION-ADJUSTED VALUES (2020 USD)	FY2007	FY2014	FY2020
Statewide Economic Impact (Sales) (millions)	\$332.6	\$247.9	\$377.0
Statewide Economic Contribution (Sales) (millions)	N/A	N/A	\$449.4
Direct Non-Local Visitor Spending (millions)	\$203.2	\$229.3	\$278.7
Direct Total Visitor Spending (millions)	N/A	N/A	\$332.1
Per Visitor Non-Local Spending	\$88.42	\$99.03	\$93.77
CHANGE FROM PREVIOUS STUDY		FY07-FY14	FY14-FY20
Change in Total Non-Local Expenditures		12.83%	21.54%
Change in Visits		-0.16%	29.52%
Change in Non-Local Expenditures per Visit		13.01%	-6.17%

Effects of COVID-19 on State Park Visits

Effects of COVID-19

- Nationally, amount of time spent in parks increased significantly compared to pre-pandemic baseline
- Parks provided relatively safe option for recreation during pandemic

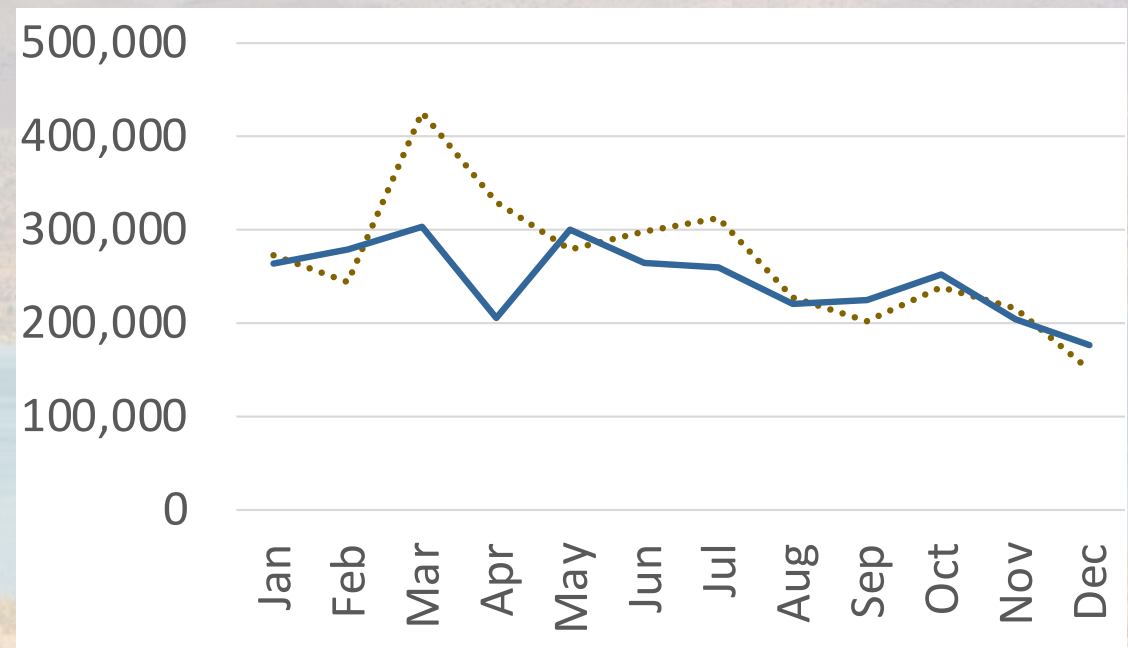
U.S. Community Mobility Report - Change in Time Spent by Location Compared to Pre-Pandemic Baseline



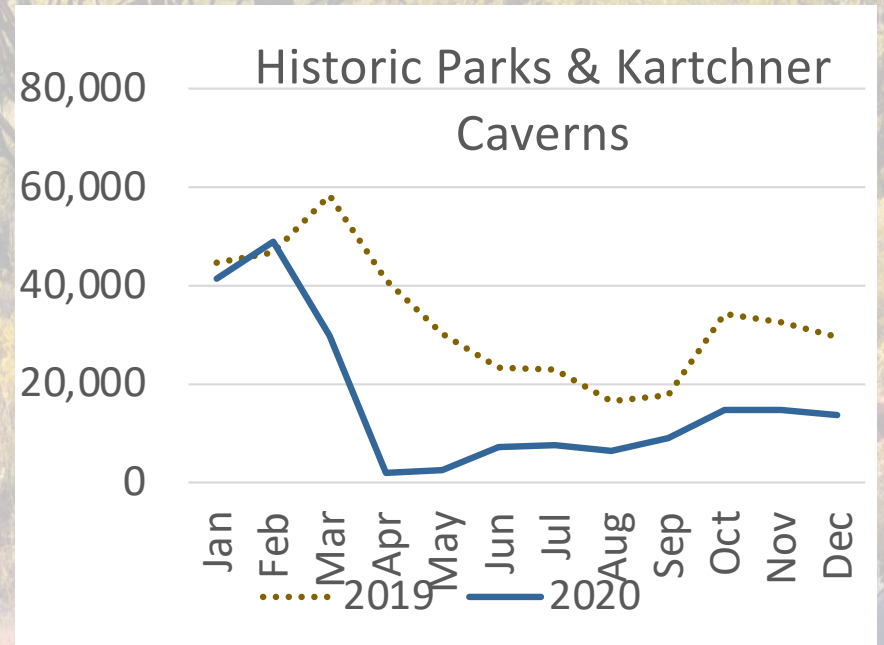
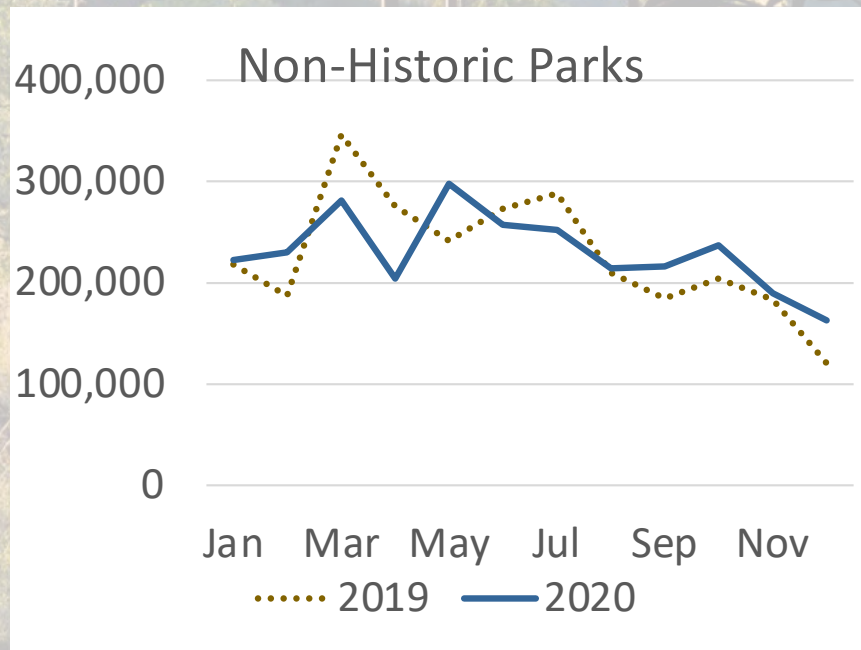
Effects of COVID-19 on State Park Visits

- Calendar year 2020 visits 7.6% lower than 2019
- Visits to non-historic parks 1% higher than 2019
- Visits to historic parks & Kartchner Cavern 50.2% lower than 2019

Monthly Visits to Arizona State Parks, 2019 & 2020



Effects of COVID-19 on State Park Visits



Conclusions & Discussion

- Significant increase in visits since the last economic impact analysis report in 2014
 - Since 2014, sites added to state park system
 - Most recreation parks have experienced increases in visitation
- Overall visitor spending up, despite lower spending per visit, due to increase in visits
- Economic contribution & impacts have increased with more visitor spending



Contact

Dari Duval
Economic Impact Analyst
duval@arizona.edu

Ashley K. Bickel
Economic Impact Analyst
ashley.bickel@arizona.edu

George Frisvold
Professor & Extension Specialist
frisvold@ag.arizona.edu



THE UNIVERSITY OF ARIZONA
COLLEGE OF AGRICULTURE & LIFE SCIENCES

**Agricultural &
Resource Economics**



THE UNIVERSITY OF ARIZONA
COLLEGE OF AGRICULTURE & LIFE SCIENCES

Cooperative Extension



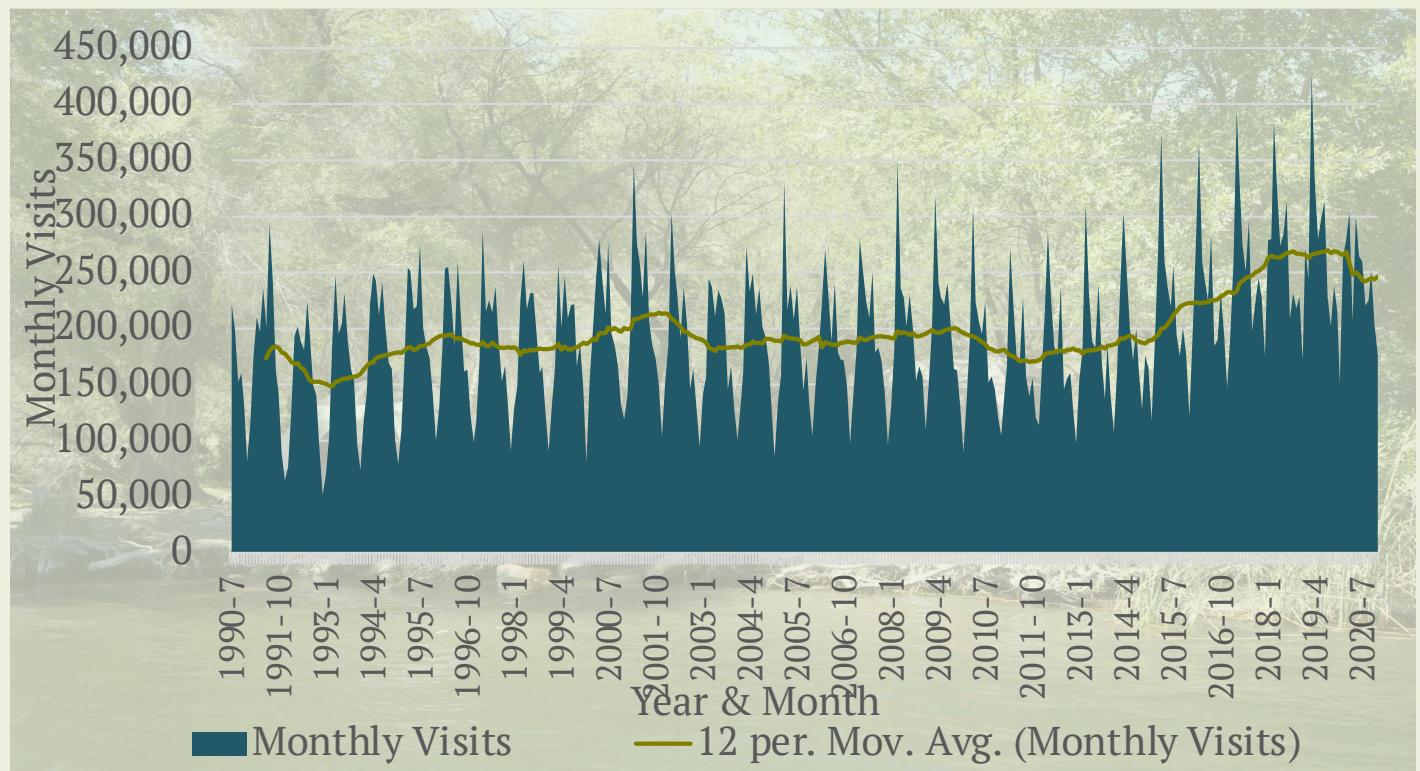
Supplementary Slides

Effects of COVID-19 on State Park Visits

Effects of COVID-19

- Growth in annual visits to state parks since 2012
- COVID interrupted this trend
- Study examines change by park type

Monthly Visits to Arizona State Parks & 12-Month Moving Average Trend, July 1990 to December 2020



Estimation Process



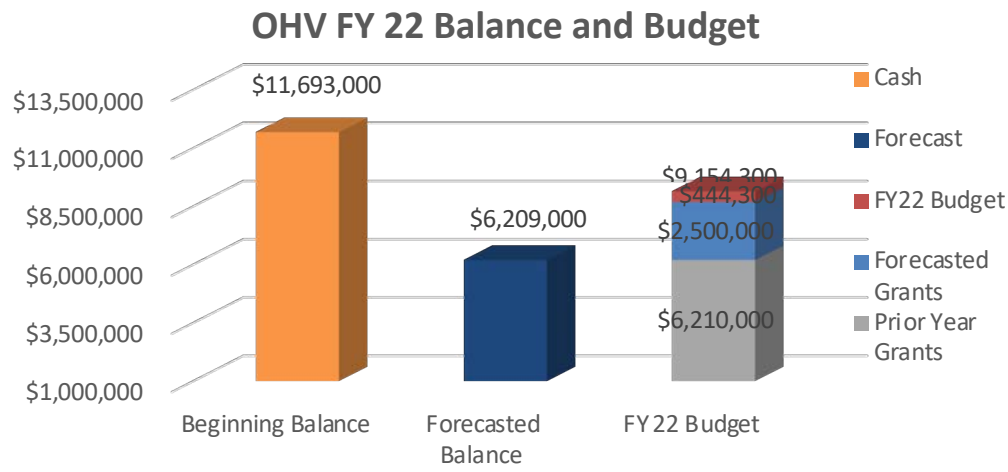
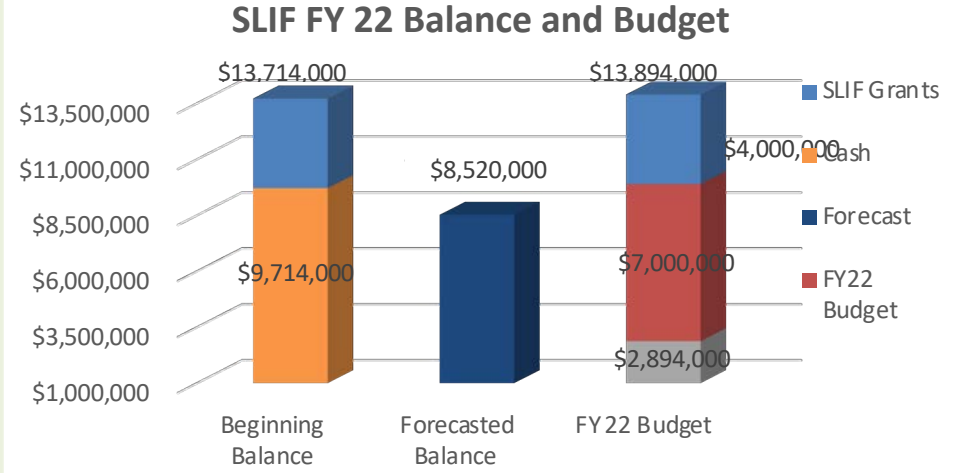
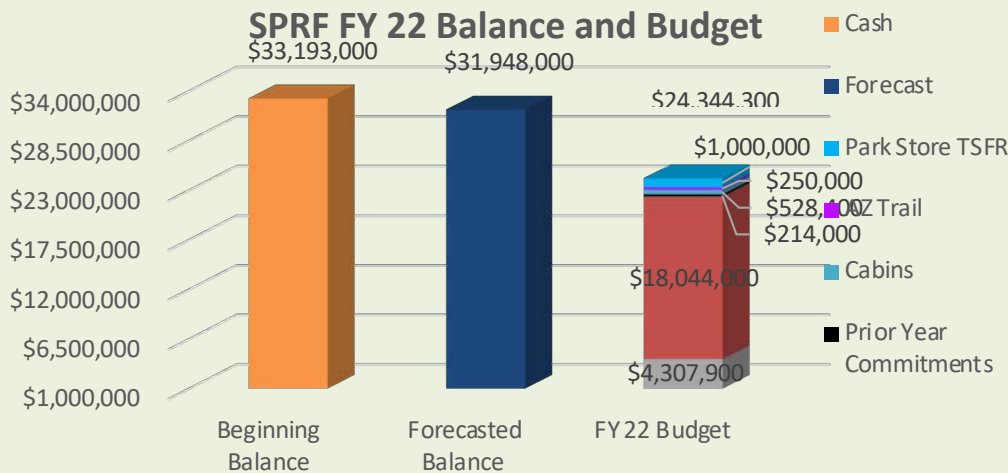
AGENDA – D4

Fiscal Year 2022 Update

-Kevin Brock, Chief Financial Officer



FY 2022 Budget and Fund Balance



Highlights

- Revenues for FY 22 are projected to increase from the prior year, SPRF 6%; SLIF 3% and OHV 3%
- SPRF & SLIF Operating Revenues continue to exceed the Annual Operating Expenditures
- SLIF Operating Expenditures Capped at \$7M
- SLIF will receive \$4M from the General Fund for Grants
- SPRF Fund will provide \$4.3M CIP; \$1M Park Store; \$528K Cabins and \$250K for the AZ Trail



FY 2022 Budgets

REVENUES (\$000's)	STATE PARK REVENUE FUND	STATE LAKE IMPROVEMENT FUND	FEDERAL FUNDS	OFF HIGHWAY VEHICLE FUND	LAND CONSERVATION FUND ADMIN.	PARTNERSHIP FUND	SUSTAINABLE PARKS & ROADS FUND	DONATIONS FUND	PARK STORE FUND	HERITAGE FUND	TOTAL
Balance Carry Forward	33,193	9,714	297	11,693	95	771	523	564	1,000	-	57,849
STATE FUNDS - OPERATING											
State Parks Revenue	23,100										23,100
SLIF - Fuel Tax/ Watercraft Registration		8,700									8,700
Park Store									1,000		1,000
Sub Total	23,100	8,700	-	-	-	-	-	-	1,000	-	90,649
OTHER FUNDS											
Donations to State Parks								51			51
Federal HPF - SHPO			1,022								1,022
OHV Fuel Tax/ OHV Registration				3,670							3,670
Federal Grants - Other (Fed Rec/ LWCF)			4,820								4,820
ADOT Roads/ IGAs/ Other						2,850					2,850
Heritage										5,000	5,000
Sustainable State Parks & Roads							97				97
SLIF GRANTS		4,000									4,000
Sub Total	-	4,000	5,842	3,670	-	2,850	97	51	-	5,000	21,510
TOTAL STATE PARKS REVENUES	23,100	12,700	5,842	3,670	-	2,850	97	51	1,000	5,000	112,159



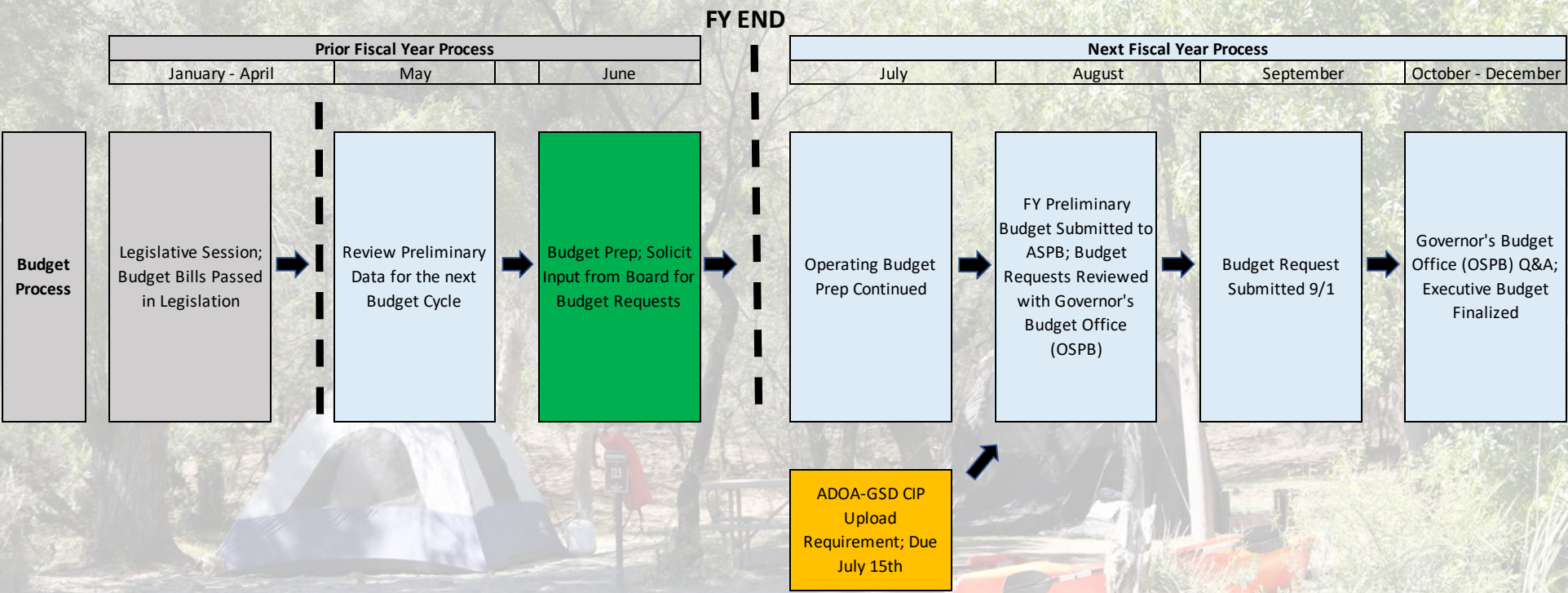
ARIZONA STATE PARKS & TRAILS



FY 2022 Budgets

EXPENDITURES (\$000's)

	STATE PARK REVENUE FUND	STATE LAKE IMPROVEMENT FUND	FEDERAL FUNDS	OFF HIGHWAY VEHICLE FUND	LAND CONSERVATION FUND ADMIN	PARTNERSHIP FUND	SUSTAINABLE PARKS & ROADS FUND	DONATIONS FUND	PARK STORE FUND	HERITAGE FUND	TOTAL
STATE FUNDS/OPERATING											
Operating Lump Sum Appropriation	15,690										15,690
Kartchner Caverns Appropriation	2,355										2,355
Park Store									1,000		
SLIF Administration		7,000									7,000
Sub Total	18,044	7,000	-	-	-	-	-	-	1,000	-	25,044
OTHER FUNDS OPERATING											
Donations								557			557
Federal HPF - SHPO / Fed Admin			1,022								1,022
Sustainable State Parks & Roads							523				523
OHV Program Administration				428							428
Sub Total	-	-	1,022	428	-	-	523	557	-	-	2,530
GRANTS /OTHER FUNDS											
OHV Grants				2,500							2,500
OHV Appropriation				17							17
Federal Grants			4,820								4,820
LCF Funds					95						95
Heritage										5,000	5,000
ADOT Roads/ IGAs/ Other						2,607					2,607
SLIF GRANTS		4,000									4,000
SPRF AZ Trail	250										250
SPRF CABIN PAY OFF	528										528
SPRF Deposit to Park Store	1,000										1,000
Sub Total	1,778	4,000	4,820	2,517	95	2,607	-	-	-	5,000	20,816
TOTAL CAPITAL PROJECTS EXPENDITURES	4,308	-	-	-	-	-	-	-	-	-	4,308
TOTAL STATE PARKS EXPENDITURES	19,823	11,000	5,842	2,944	95	2,607	523	557	1,000	5,000	52,699
Prior Year CIP/ Other Commitments/ Grants	214	2,894	-	6,210	-	-	-	-	-	-	-
PROJECTED FUND BALANCE	31,948	8,520	297	6,209	-	1,014	97	58	1,000	-	49,143



Prior Fiscal Year Process

January - April May June

Next Fiscal Year Process

July August September October - December

Budget Process

Legislative Session; Budget Bills Passed in Legislation

Review Preliminary Data for the next Budget Cycle

Budget Prep; Solicit Input from Board for Budget Requests

Operating Budget Prep Continued

FY Preliminary Budget Submitted to ASPB; Budget Requests Reviewed with Governor's Budget Office (OSPB)

Budget Request Submitted 9/1

Governor's Budget Office (OSPB) Q&A; Executive Budget Finalized

ADOA-GSD CIP Upload Requirement; Due July 15th

FY END

AGENDA – D4

Motion:

I move to grant the Executive Director lump sum spending authority for the legislatively approved FY 2022 operating, donations and capital budgets.

AGENDA – D5

September Park Highlight: Riordan Mansion State Historic Park

-Nikki Lober, Park Manager.





Riordan Mansion State Historic Park



ARIZONA
STATE PARKS & TRAILS
EST. 1957

Presented 9/16/2021 by Nikki Lober, Park Manager



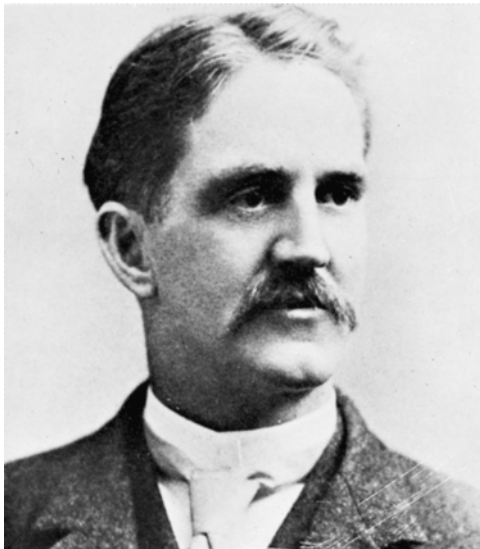
**“If Flagstaff was fathered
by the railroad,
then its mother was the
lumber industry...”**
--Platt Cline



Edward E. Ayer



Michael James Riordan



Denis Matthew Riordan

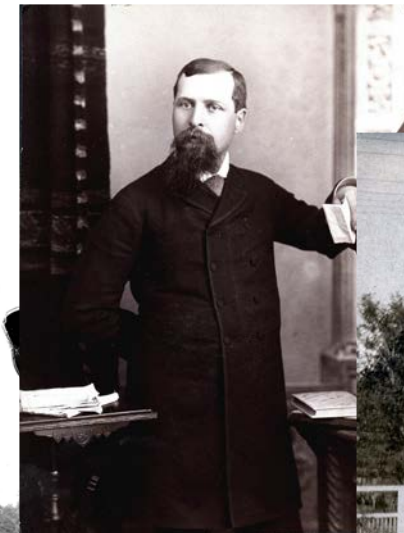


Timothy Allen Riordan





Building a Community



The Metz Sisters and the Riordan Brothers



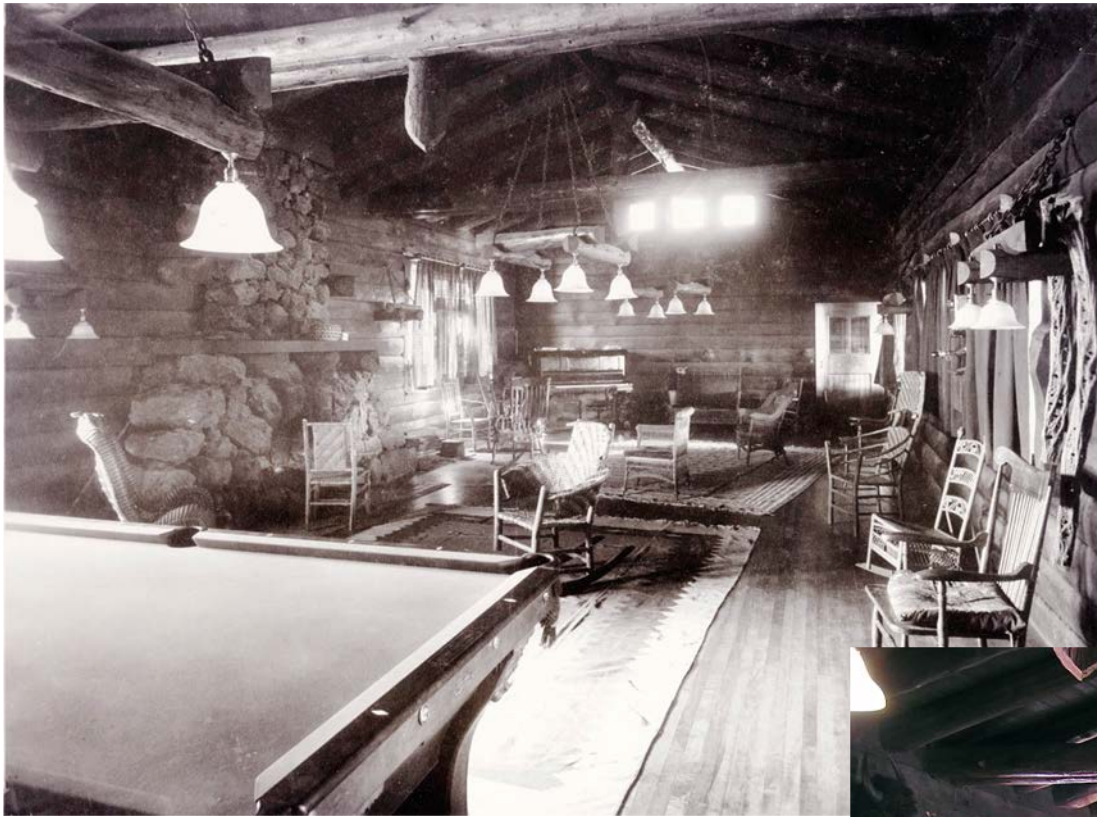


Tim, Mary, Anna, and Caroline



Elizabeth, Robert, Blanche, Clare, and Arthur Riordan





We Are Open

Park Hours:

Friday, Saturday and Sundays
9:30 a.m. – 5:00 p.m.

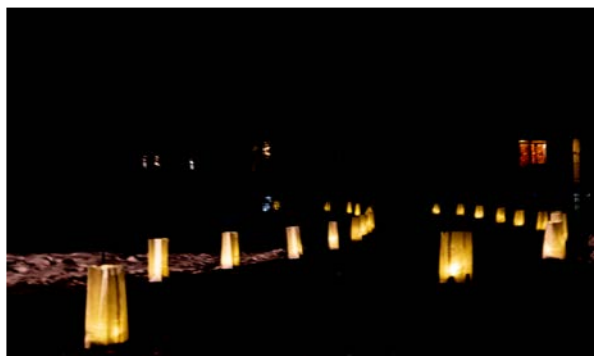
Tours:

10:00, 12:00, 2:00, and 4:00

Call 928-779-4395 for reservations
Additional times may be available if
staffing allows.



Lectures, Special Tours & Events



RIORDAN MANSION
STATE HISTORIC PARK

[EXPLORE](#) ▾ [ABOUT THE MANSION](#) ▾ [THINGS TO DO](#) ▾ [GROUP PLANNING](#) ▾

PARK HISTORY
LECTURE SERIES
GUSTAV STICKLEY
FAQS
PERIOD HISTORY
RIORDAN MANSION



ARIZONA
STATE PARKS & TRAILS

Preservation Projects





Questions?



ARIZONA
STATE PARKS & TRAILS

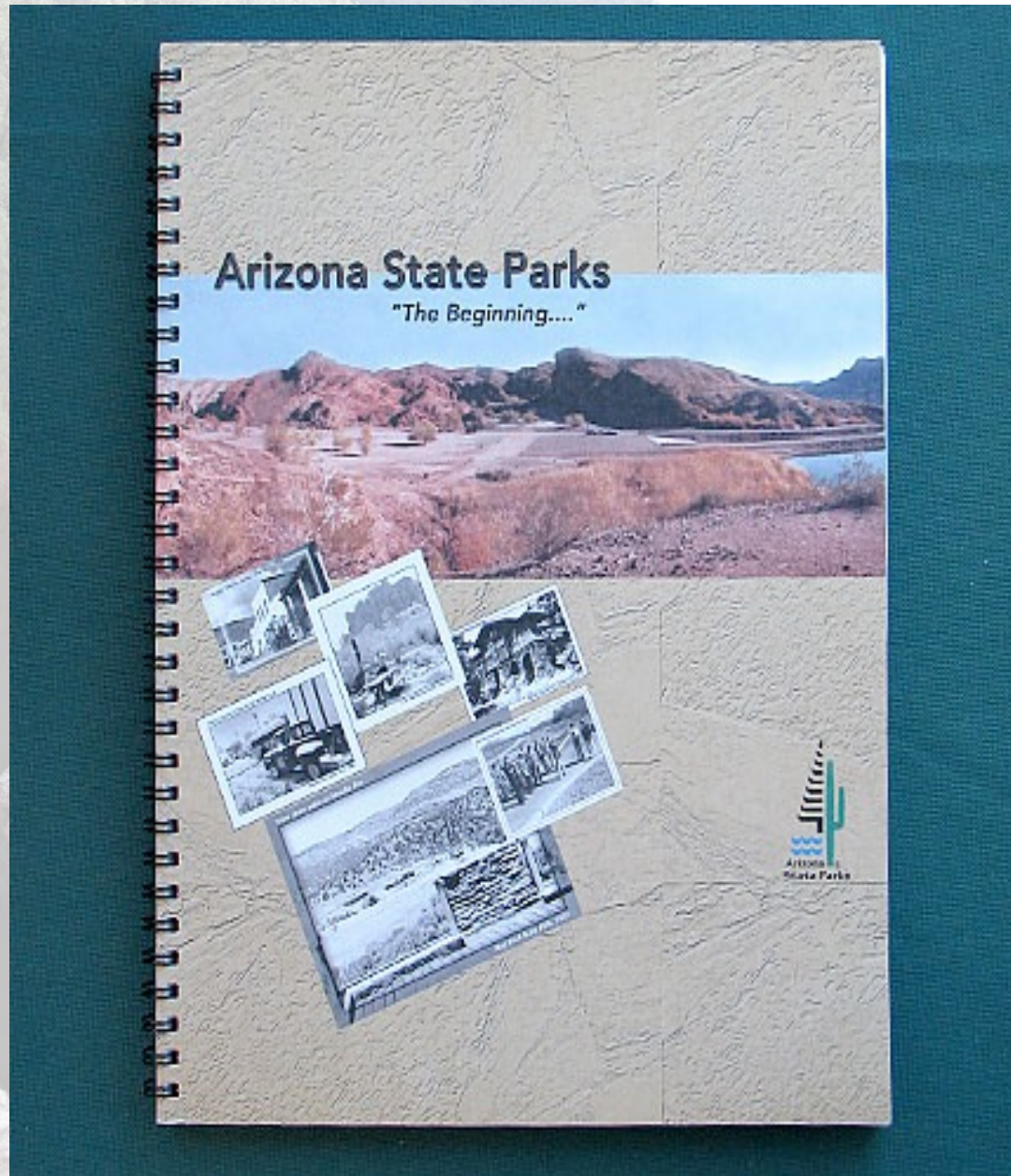
EST. 1957

AGENDA – D6

Arizona State Parks and Trails Employee Recognition: Charles Eatherly.

-Bob Broscheid, Executive Director

Charles Eatherly...ASP's historian



7/21/15

Charles Educational Background

- Bachelor of Science in Park Administration, 1961, Texas Tech University
- Master of Science in Park Administration, 1963, Texas Tech University



TEXAS TECH UNIVERSITY

Charles Career Highlights

- Arizona State Parks (50 years) (1971-2021)
- Arkansas Tech University (1970-1971)
- Norman Parks & Recreation Department (1967-1970)
- Maricopa County Parks & Recreation Department (1963 to 1967)



ARKANSAS TECH
UNIVERSITY



City of Norman

Building an Inclusive Community



Home of the
University of Oklahoma

Involved with the following parks:

- **Dead Horse Ranch State Park (SP)**
- **Catalina SP**
- **Riordan Mansion State Historic Park (SHP)**
- **Homolovi SP**
- **Fool Hollow State Recreation Area**
- **Kartchner Caverns SP**
- **McFarland SHP**
- **Red Rock SP**
- **Slide Rock SP,**
- **Tonto Natural Bridge SP**
- **Verde River Greenway State Natural Area (SNA)**
- **Sonoita Creek SNA,**
- **Patagonia Lake SP,**
- **Roper Lake SP,**
- **Boyce Thompson Arboretum SP,**
- **Lost Dutchman SP,**
- **Oracle SP.**

Some of the work Charles is proudest of....encouraging public and agency participation in planning



Recognition of Achievement Video - 2015



Recipient of American Academy for Park and Recreation Administration "Legends" Award

Recognition of Achievement - 2015

Charles Eatherly

Recipient of the National Association of State Park Directors - Ney C. Landrum Park History Award

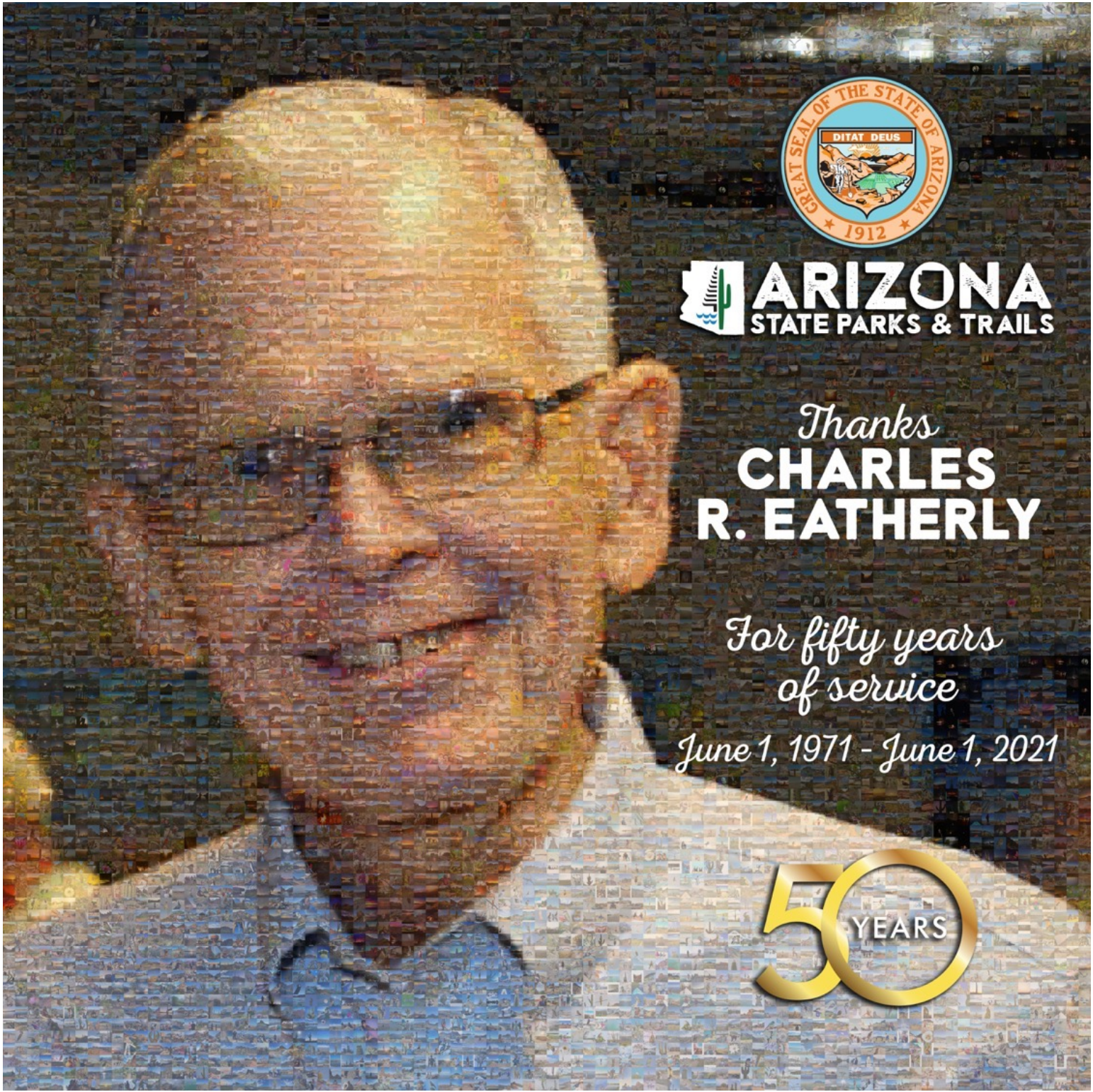


Emeritus Award

**2017 APRA
EMERITUS AWARD**

**CONGRATULATIONS
CHARLES EATHERLY!**





Thanks
**CHARLES
R. EATHERLY**

*For fifty years
of service
June 1, 1971 - June 1, 2021*



AGENDA – E

Future Agenda Items

Board members may identify items or issues they wish to be considered for inclusion on a future Board agenda. The Board may vote to take action on or provide the agency direction on this agenda item.

AGENDA – F

EXECUTIVE DIRECTOR’S REPORT ON CURRENT EVENTS

The Executive Director may present a summary of current events and/or recent experiences of interest to the outdoor recreation community and/or the status of any projects with which they are currently involved. The Board will not discuss or take any action on any current event summary.

AGENDA – G

Current Events

Board members will discuss current events and/or recent experiences of interest to the outdoor recreation community and/or the status of any projects with which they are currently involved.

AGENDA – H

Call to the Public

The chair will recognize those wishing to address the Board.

AGENDA – I

Future Meeting Dates

Arizona State Parks & Trails 2021 Board Meeting Schedule

Date	Location
Thursday, October 21, 2021	Central Office
Thursday, November 18, 2021	Central Office
Thursday, December 16, 2021	Central Office

THANK YOU!

ARIZONA
STATE PARKS & TRAILS

