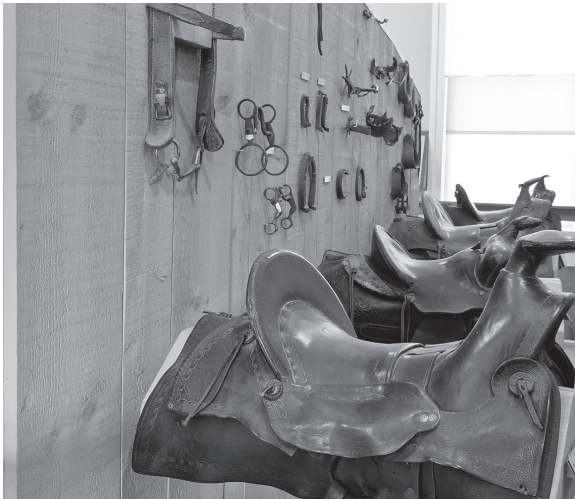


## Nearby Parks

If you're having a great time here, don't forget to visit one of the two nearby state parks!

**Kartchner Caverns State Park (29-miles)** "Arizona's Best Attraction" as voted by USA Today's 2017 reader's poll, this hidden jewel features cave formations found nowhere else in the world. Take the Throne Room tour and see the five-story formation Kubla Khan! (520) 586-4100

**Patagonia Lake State Park/Sonoita Creek State Natural Area (61-miles)** Tucked away in the rolling hills of southeastern Arizona is a hidden treasure. This is an ideal place to find whitetail deer roaming the hills and great blue herons walking the shoreline. The park offers a campground, beach, picnic area with ramadas, tables and grills, a creek trail, boat ramps, and a marina. (520) 287-6965



### Tombstone Courthouse State Historic Park

233 Toughnut St Tombstone, AZ 85638  
**(520) 457-3311 | 1-877-MYPARKS**  
AZStateParks.com/tombstone

**AZStateParks**  
Like/Follow/Watch us on:



# TOMBSTONE COURTHOUSE

STATE HISTORIC PARK



08/23

Step into the past at **Tombstone Courthouse State Historic Park**. Built in the shape of a Roman cross, the two-story 1882 Victorian structure once housed the Cochise County offices of the sheriff, recorder, treasurer, the jail, courtrooms, and the board of supervisors. Today, the old county courthouse is a 12,000 square-foot museum filled with the memorabilia of those who tamed the territory.

Huge rooms inside the old courthouse feature exhibits chronicling Tombstone's colorful frontier history, from Geronimo and the silver mining days to the O.K. Corral gun battle, and the stories of Tombstone's unique but no less notorious citizens.

Thank you for visiting!



1-877-MYPARKS | AZStateParks.com

## The West's Wildest Mining Town

Tombstone owes its beginnings to Ed Schieffelin, who prospected the nearby hills in 1877. Friends warned him that all he would find would be his tombstone, but instead he found silver-ledges of it - and the rush was on.

### Tombstone Attractions

**Boothill Cemetery:** Laid out in 1879 by the Tombstone Townsite Company, this original graveyard is just off Hwy 80 West, where many of Tombstone's earliest pioneers were laid to rest. The name Boot Hill comes from the fact that many of these graves were filled with people that died suddenly or violently with their boots on! Some two hundred fifty known people were buried in Boot Hill, before it officially closed its doors in 1884. Today, Boot Hill is a favorite stop for Tombstone tourists. It's located on Hwy 80 in Tombstone, AZ.

**O.K. Corral and Historama:** World-famous site of the 1881 Gunfight at the O.K. Corral® in Tombstone, AZ. Enjoy daily reenactments of the famous Gunfight, with Wyatt Earp and Doc Holliday. Life-sized animated figures of the gunfighters are located on the very spot where the Gunfight began. Visit our four museums. See Doc Holliday's room and admire over 100 of C.S. Fly's photos of 1880s Tombstone and the Apache Geronimo. Actor Vincent Price tells Tombstone's story in Tombstone's Historama. Handicapped accessible. Admission. Kids under 6 free.

**Crystal Palace Saloon:** Originally known as the Golden Eagle Brewing Company, this establishment was one of early Tombstone's first saloons. It occupied just a small lot of about 50 by 30 feet while the brewery was in another structure to the rear. Named after its builder, Benjamin Wehrfritz, the Wehrfritz Building was expanded by adding a second story to house the offices for such notables as U.S. Deputy Marshal Virgil Earp, attorney George W. Berry, and Dr. George E. Goodfellow. It is even known that "Buckskin" Frank Leslie was a night watchman here for a short time.

## Park Rules

### General Rules

- Do not litter! Recreate responsibly and pack out what you bring in, or use the trash receptacles provided in the park.
- Drive your vehicle only on designated paved surfaces. Park only in designated parking areas. Do not park on the side of the road.
- Stay on designated trails. Cutting trails degrades habitat and harms the landscape.
- Do not use glass containers in the park.
- All of our parks adhere to firearm and hunting regulations. Please familiarize yourself with this information.

### Pets

- Please keep non-service animals out of park buildings.
- Keep your pets on a maximum six-foot leash at all times. Pets must be attended at all times.
- **Pick up after your pet.**
- For additional information related to pets, visit our website or ask park staff.

The rules of this park are not limited to the rules listed above. Additional park rules may be found at **AZStateParks.com**.

### Museum and Exhibits

The museum in the courthouse has interpretive exhibits on the history of Tombstone and Cochise County, including a period sheriff's office, artist drawings and interpretations of the gunfight at the OK Corral, Wyatt Earp, mining exhibit area, saloon, gaming room, courtroom, ranching, and residents of Tombstone. Outside in the courtyard is a reproduction of the gallows, the site where seven convicted murderers met their fate.

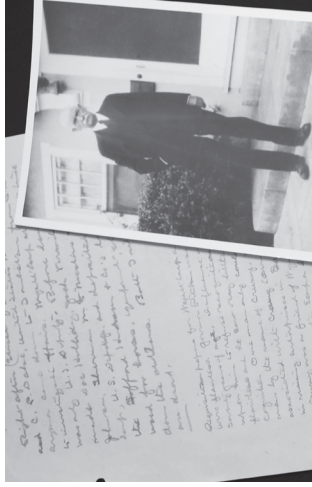
### Tours

We offer a self-guided tour that allows you to become immersed in Tombstone's sometimes rowdy and lawless past. You can also request guided tours of the facility for an additional fee.

# TOMBSTONE COURTHOUSE

STATE HISTORIC PARK

Take a look at just a few of our exhibits!



Our newest exhibit is our Josephine Earp collection, which includes photos and documents about the Earps.



**The Gallows** is one of our most popular exhibits, where frontier justice was dealt to criminals. We appreciate your interest in our exhibit but there is no access to the gallows platform.



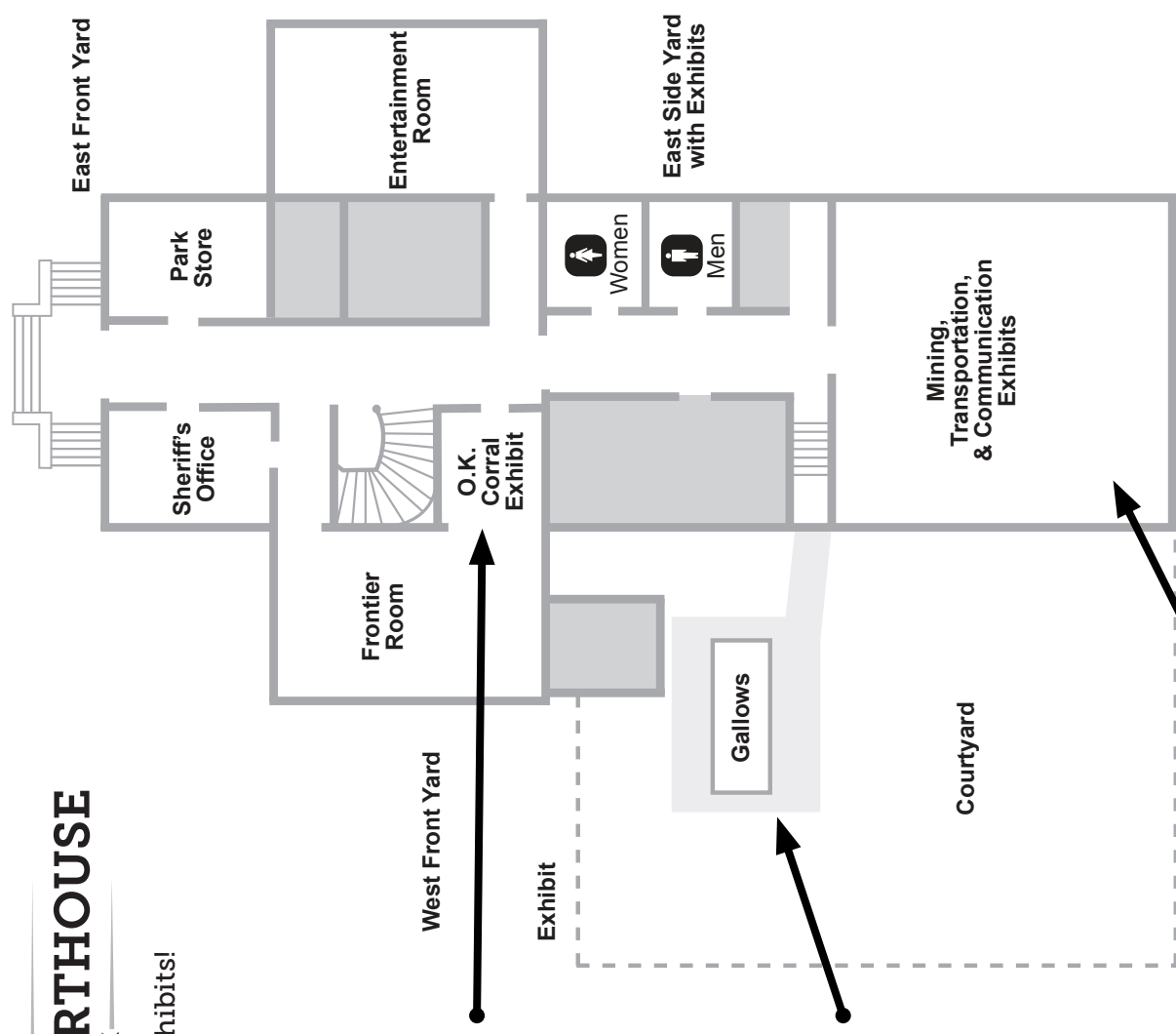
You can see all kinds of historic photos, artifacts, and memorabilia from the state's rich mining past.



Learn about Arizona's ranching history in the Cattleman's Room, with saddles and historic cowhand tools.



Justice was administered here for Cochise County from 1882 to 1931.



1st Floor

2nd Floor